

YPR-50 Type Pressure Reducing Valve For Steam

Install a water separator at the inlet of the pressure reducing valve to prevent flow of water coming in and to ensure removal of condensation water,

01



Features

- Direct operating pressure reducing valve for small flow for outstanding pressure control performance and wide pressure regulating range.
- Stainless steel components for corrosion resistance, long service life and durability.

Specifications

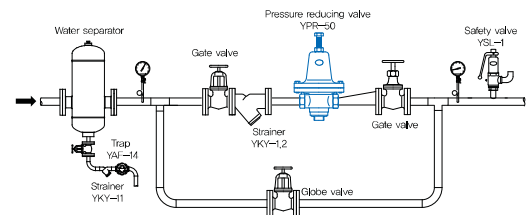
Applicable fluid		Steam
Primary pressure		Maximum 1,0MPa
Secondary pressure regulating range		0,02~0,1MPa (for low pressure), 0,1~0,2MPa (for medium pressure), 0,2~1MPa (for standard pressure)
Maximum pressure reduction ratio		10:1
Minimum differential pressure in the inlet and outlet side of the valve		0,05MPa
Fluid temperature		220°C below
Leakage allowance		0,01% less of rated flow (ANSI b16.104 class IV)
End connection		KS PT SCREW
Materials	Body	GC200
	Disc, seat	STS
	Diaphragm	STS
Hydraulic test pressure		1,5MPa

- ▶ Strainer (over 80 Mesh) installation is required to ahead inlet when valve installing.
- ▶ Install a water separator at the inlet of the pressure reducing valve to ensure the removal of condensate.

Dimensions

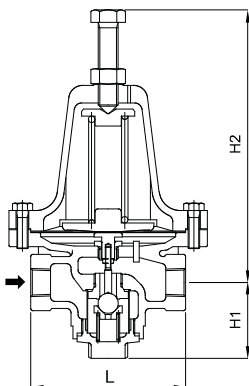
호칭지름	L	H1	H2	Weight (kg)
15(½")	110	54	180	4,5
20(¾")	110	54	180	4,5
25(1")	120	61	234	8,8

Application Diagram (Example)



(kg/h)

Dimensional drawing



Capacity

Primary pressure (MPa)	Secondary pressure (MPa)	Size		
		15(½")	20(¾")	25(1")
0,1	0,05	3,4	3,9	6,5
	0,14	3	3,9	4,4
0,21	0,09	3,7	3,4	7,4
	0,1	3,7	4,2	7,1
0,27	0,16	4,4	5	7,9
	0,2	2,3	2,8	4,2
0,34	0,14	5,6	6,8	11,2
	0,23	7	8,5	13,2
0,41	0,3	2,8	3,9	5,4
	0,04	3,4	4,4	6,2
0,55	0,14	7	8,1	13,2
	0,27	9,1	10,1	17
0,7	0,04	3,9	5,1	7
	0,13	6,3	7,3	12
0,82	0,27	10,6	11,6	20,3
	0,33	9,6	10,8	18,6

Primary pressure (MPa)	Secondary pressure (MPa)	Size		
		15(½")	20(¾")	25(1")
0,55	0,04	12,4	14,4	24
	0,06	4,2	5,4	7,6
	0,16	8,5	9,6	15,5
0,7	0,37	13,1	15,8	24,8
	0,07	4,8	5,6	9,3
	0,27	13,9	16,2	26,4
0,82	0,45	15,8	18,4	30,7
	0,55	14,6	17	27,9
	0,31	16,9	18,8	31,6
1,04	0,48	19,4	21,9	36,4
	0,67	16,2	19,4	31,8
	0,8	7,7	8,5	13,9
1,04	0,1	9,3	11,6	17,9
	0,38	21	24,8	41,8
	0,6	25,6	29,6	50
1,04	0,82	20,2	23,4	38,7