

Steam boiler

YSF-3, 4 Type Safety Valve (Full Bore Type)

Pressure Vessel

Features

- Simple structure and outstanding performance.
- Superb performance, followed by strict quality control procedure.
- High impact resistance and good abrasion resistance : The disc and seat are stainless steel welded with satellite.
- Test lever attached : Periodical performance inspections can be conducted.
- Approval from the Korea Occupational Safety and Health Agency (KOSHA).

02



YSF-3 Type

Specification

Type		YSF-3	YSF-4
Test lever		Yes	Optional
Applicable fluid		Steam, air	Liquid
Set pressure range		0.1~3.0 MPa	
Fluid temperature		220°C below	80°C below
End connection	Inlet	INLET 10, 20, 30K RF FLANGE	
	Outlet	KS B 1511 10K FF FLANGE	
Material	Body	SCPH2	
	Disc, seat	SSC13(Stellite welding)	
Hydraulic test pressure		1.5 times of applicable flange rating	

▶ JIS and ANSI FLANGE are also made to order.

Dimensions

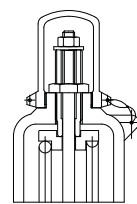
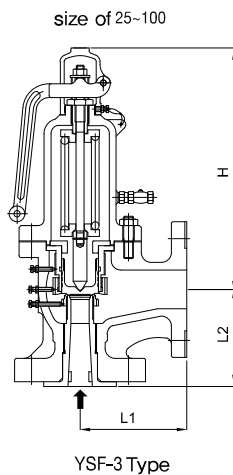
(mm)

Size Inlet X Outlet	Seat diameter	Throat diameter	Throat area(mm ²)	Lift	Face to Face		Height(H)		Blow off rate(kg/h)		Weight(kg)	
					L1	L2	YSF-3	YSF-4	Steam	Air	YSF-3	YSF-4
di X do	ds	dt	A	ℓ	L1	L2	YSF-3	YSF-4	Steam	Air	YSF-3	YSF-4
25(1")X40(1½")	22	19	490.9	5.0	115	100	249	264	864	9796	13,35	12.4
40(1½")X65(2½")	35	30	1256.6	7.5	130	125	340	316	2213	25078	24.2	25.2
50(2")X80(3")	45	38	1963.5	9.5	141	135	380	380	3457	39184	32,05	34.4
65(2½")X100(4")	58	49	3318.3	12.5	161	160	480	480	5843	66221	58,6	55,8
80(3")X125(5")	71	61	5026.5	15.5	179	180	535	535	8851	100312	82,7	77,2
100(4")X150(6")	88	76	7854.0	19.0	209	205	668	668	13830	156737	130	129
125(5")X200(8")	111	95	12271.8	24.0	232	240	846	828	21609	244901	273	269,5
150(6")X200(8")	134	115	17671.5	29.0	262	250	935	916	31117	352658	325	328
200(8")X250(10")	176	152	31415.9	38.0	355	300	1115	1135	55319	626947	645	633



YSF-4 Type

Dimensional drawing



size of 125-200

