

Level Switches Model WRS / WCS

WIKA datasheet WRS WCS



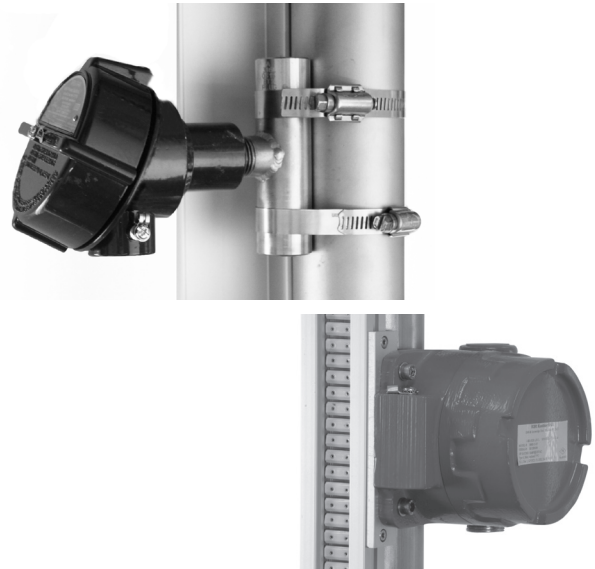
Application

WRS and WCS series switches are suitable for most industrial and commercial applications including:

- Refinery and chemical industries
- Energy and power plant technology
- Feed water heaters and boilers
- Oil and gas industries
- Offshore exploration and drilling
- Pipeline compressor applications

Features

- Process temperature ranges from -320°F to 650°F or -184°C to 343°C
- Mounted externally to the process, can be maintained without interruption
- Cast aluminum epoxy coated housings
- Adjustable design allows for custom switch locations



Specifications

WRS

Switch type: Magnetic reed contact: 1 SPDT or DPDT, Contact behavior: Bistable (magnetically latched), Switching capacity (non-inductive loads): 230V AC, 60VA, 1A or 230V DC, 30W, 0.5A

WCS

Switch type: Dry contact snap-action, Contact type: 1 SPDT, Contact behavior: Bistable (magnetically latched), Switching capacity (non-inductive loads): 230V AC, 200VA, 5A or 230V DC, 60W, 2A

Housing Options

NEMA 4X Epoxy coated aluminum, XP/II/1BCDT6 aluminum or stainless or NEMA 7/9 FM class 1, division 1, group B

Electrical Approvals

FM

Hysteresis

2-3mm for WRS series, 5-10mm for WCS series

Termination Type

Terminal block

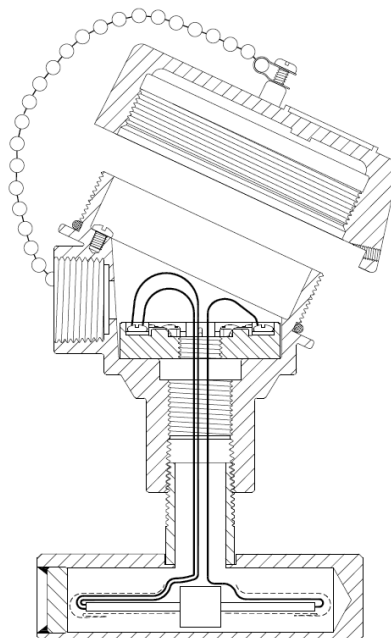
* CSA Approval available on WRS-S-AX/SX model only

WRS Options

Switch option
SPDT or DPDT

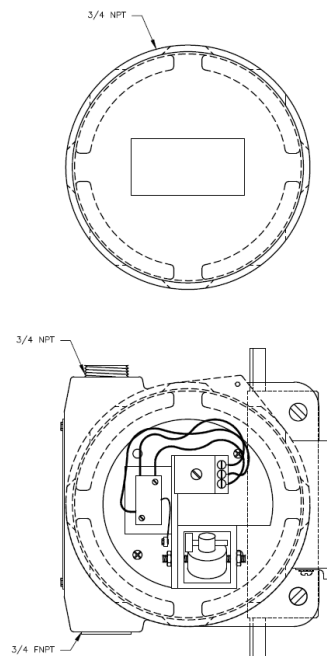
Housing style
NEMA 4X or NEMA 7/9 FM class
1, division 1, group B, CSA class
available for SPDT

High temperature
-300°F to 650°F or -184°C to
343°C



WCS Options

Switch type
5A SPDT in NEMA 7/9 FM, class 1,
division 1, group B housing



The specifications given in this document represent the state of engineering at the time of publishing. We reserve the right to make modifications to the specifications and materials.



Gayesco-WIKA USA
229 Beltway Green Boulevard
Pasadena, Texas 77503
Tel. +1 713 475 0022
Fax +1 713 475 0011
info@wikahouston.com
www.wika.com

Appendix

Type code - WRS

Option 1		Option 2	
1	Switch option	1	Switch option
	S SPDT D DPDT		S SPDT
2	Housing style	2	Housing style
	A4X Nema 4X housing ABX Nema 7/9 FM Cl 1 Div. 1 Gr. B		AX Nema 4X housing SX Stainless version
3	High temperature		
	HT High temperature, up to 650°F (standard up to 300°F) *for standard temperature, leave blank		

Ordering example

WRS - **1** - **2** - **3**
Switch option Housing style High temperature

Type code - WCS

*Only option: 5 amp SPDT in Nema 7/9 FM Cl 1 Div. 1 Gr. B housing

	Switch
	SPDT
1	Housing style
	ABX Nema 7/9 FM Cl 1 Div. 1 Gr. B

Ordering code:

WCS - **ABX**
Housing style