

FULLY ST/STEEL PRESSURE GAUGE (Bayonet Casing)



P252 (Dry) & P258 (Oil Filled) models are designed for corrosive environment and heavy duty which do not have high viscosity or do not crystallize.

It's good with application in chemical, petro-chemical, pharmaceutical, food, beverage, refining, marine, power plants, water treatment, refrigerating and cryogenic processing industries.

Systems or equipments with pulsating pressure or mechanical shock & vibration are apparent, the Oil Filled model is recommended.

Standard Specification

Model	: P252 (Dry) & P258 (Oil Filled)
Dial Size	: 2 1/2" (63mm), 3" (75mm), 4" (100 mm), 6" (160mm)
Case / Cover	: SS304
Window	: Glass
Movement	: SS304
Element Tube and Connection	: SS316L
Accuracy	: 1.6 PER DIN 16005 (2 1/2"and 3") 1.0 PER DIN 16005 (4" and 6")
Blow Protection	: Back, Rubber Disc
Degree Protection	: IP 65
Working Pressure	: Max 100% of FS
Over Pressure Limit	: 130% of full scale value
Ambient Temperature	: -40 ~ +60 °C
Process Temperature	: Max +100 °C Max +65 °C (Oil Filled Model)
Oil Filling (Damping Liquid)	: Glycerin Oil
Option	: Silicon Oil

QUALITY INSTRUMENTATION – your best application with cost saving

INDUSTRIAL PRESSURE GAUGE

MODEL

P252 (DRY)

P258 (OIL FILLED)

MOUNTING TYPE (REFER TO DIMENSION)

- A:** Direct bottom connection
- B:** Bottom connection with surface mounting plate
- G:** Lower back connection
- N:** Lower back connection with panel mounting plate

DIAL SIZE

- 2 1/2" (63mm)
- 3" (75mm)
- 4" (100mm)
- 6" (160mm)

RANGE (REFER PRESSURE TABLE)

STANDARD CONNECTION TYPE

- 1/4" BSPT / NPT (2 1/2" Dial)
- 3/8" BSPT / NPT (4" Dial)
- 1/2" BSPT / NPT (4"Dial)

SAMPLE OF ORDERING

P258

G

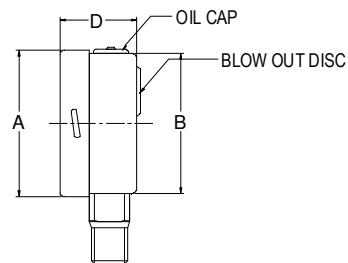
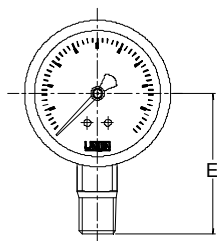
4"

0~10K

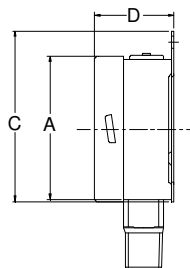
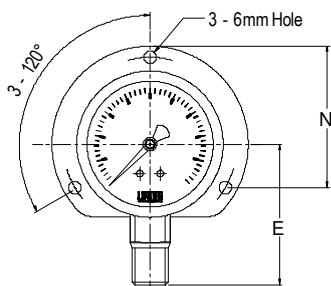
1/2" BSPT

INDUSTRIAL PRESSURE GAUGE

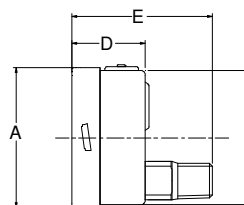
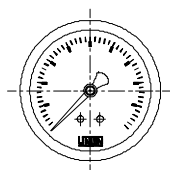
CODE A*



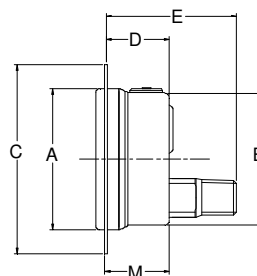
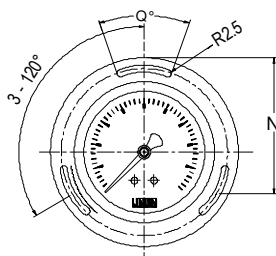
CODE B*



CODE G*



CODE N*



Scale (mm)

DIAL SIZE	CODE	A	B	C	D	E	M	N	Q
Ø80	A*	81.2			39.5	66.50			
	B*			108.0	43.0			87.0	
	G*					39.5	69.50		
	N*		83.2	108.0	39.5	35.0		87.0	10.0
Ø100	A*	100.8			50.0	83.0			
	B*			132.5	54.4			87.0	
	G*		99.0			50.0	45.0		
	N*		103.1	131.0	50.0	87.0		28.0	
Ø160	A*	160.6			52.5	112.0			
	B*			196.0	56.0			122.0	
	G*		159.0			52.5	85.50		
	N*		163.6	182.0	52.5	47.50		122.0	

QUALITY INSTRUMENTATION – your best application with cost saving

STANDARD AVAILABLE RANGES

GAUGE	RANGE (kgf/cm ² / psi)	Dial size			
		2 1/2"	3"	4"	6"
VACUUM	-76cmHg ~ 0 (-30"Hg)	0	0	0	0
COMPOUND	-76cmHg ~ 1 Kgf/cm ² (5 psi)	0	X	0	0
	-76cmHg ~ 2 Kgf/cm ² (30 psi)	0	0	0	0
	-76cmHg ~ 3 Kgf/cm ² (45 psi)	0	0	0	0
	-76cmHg ~ 4 Kgf/cm ² (60 psi)	0	0	0	0
	-76cmHg ~ 7 Kgf/cm ² (100 psi)	0	0	0	0
	-76cmHg ~ 10 Kgf/cm ² (150 psi)	0	0	0	0
	-76cmHg ~ 15 Kgf/cm ² (200 psi)	0	0	0	0
	-76cmHg ~ 20 Kgf/cm ² (300 psi)	0	0	0	0
PRESSURE	0 ~ 1 Kgf/cm ² (15 psi)	0	0	0	0
	0 ~ 2 Kgf/cm ² (30 psi)	0	0	0	0
	0 ~ 3 Kgf/cm ² (45 psi)	0	0	0	0
	0 ~ 4 Kgf/cm ² (60 psi)	0	0	0	0
	0 ~ 6 Kgf/cm ² (80 psi)	0	0	0	0
	0 ~ 7 Kgf/cm ² (100 psi)	0	0	0	0
	0 ~ 10 Kgf/cm ² (150 psi)	0	0	0	0
	0 ~ 15 Kgf/cm ² (200 psi)	0	0	0	0
	0 ~ 20 Kgf/cm ² (300 psi)	0	0	0	0
	0 ~ 25 Kgf/cm ² (350 psi)	0	0	0	0
	0 ~ 30 Kgf/cm ² (400 psi)	0	0	0	0
	0 ~ 35 Kgf/cm ² (500 psi)	0	0	0	0
	0 ~ 40 Kgf/cm ² (600 psi)	0	0	0	0
	0 ~ 50 Kgf/cm ² (700 psi)	0	0	0	0
	0 ~ 60 Kgf/cm ² (900 psi)	0	0	0	0
	0 ~ 70 Kgf/cm ² (1000 psi)	0	0	0	0
	0 ~ 100 Kgf/cm ² (1500 psi)	0	0	0	0
	0 ~ 150 Kgf/cm ² (2000 psi)	0	0	0	0
	0 ~ 250 Kgf/cm ² (3800 psi)	0	0	0	0
	0 ~ 300 Kgf/cm ² (4000psi)	0	0	0	0
	0 ~ 350 Kgf/cm ² (5000 psi)	0	0	0	0
0 ~ 400 Kgf/cm ² (6000 psi)	0	0	0	0	
0 ~ 500 Kgf/cm ² (7000psi)	0	0	0	0	
0 ~ 600 Kgf/cm ² (8000 psi)	0	0	0	0	
0 ~ 700 Kgf/cm ² (10,000 psi)	0	0	0	0	
0 ~ 1000 Kgf/cm ² (15,000 psi)	X	0	0	0	

X : Not Available O : Available

**Note: Due to ongoing and development, technical information could changed without notice

QUALITY INSTRUMENTATION – your best application with cost saving

