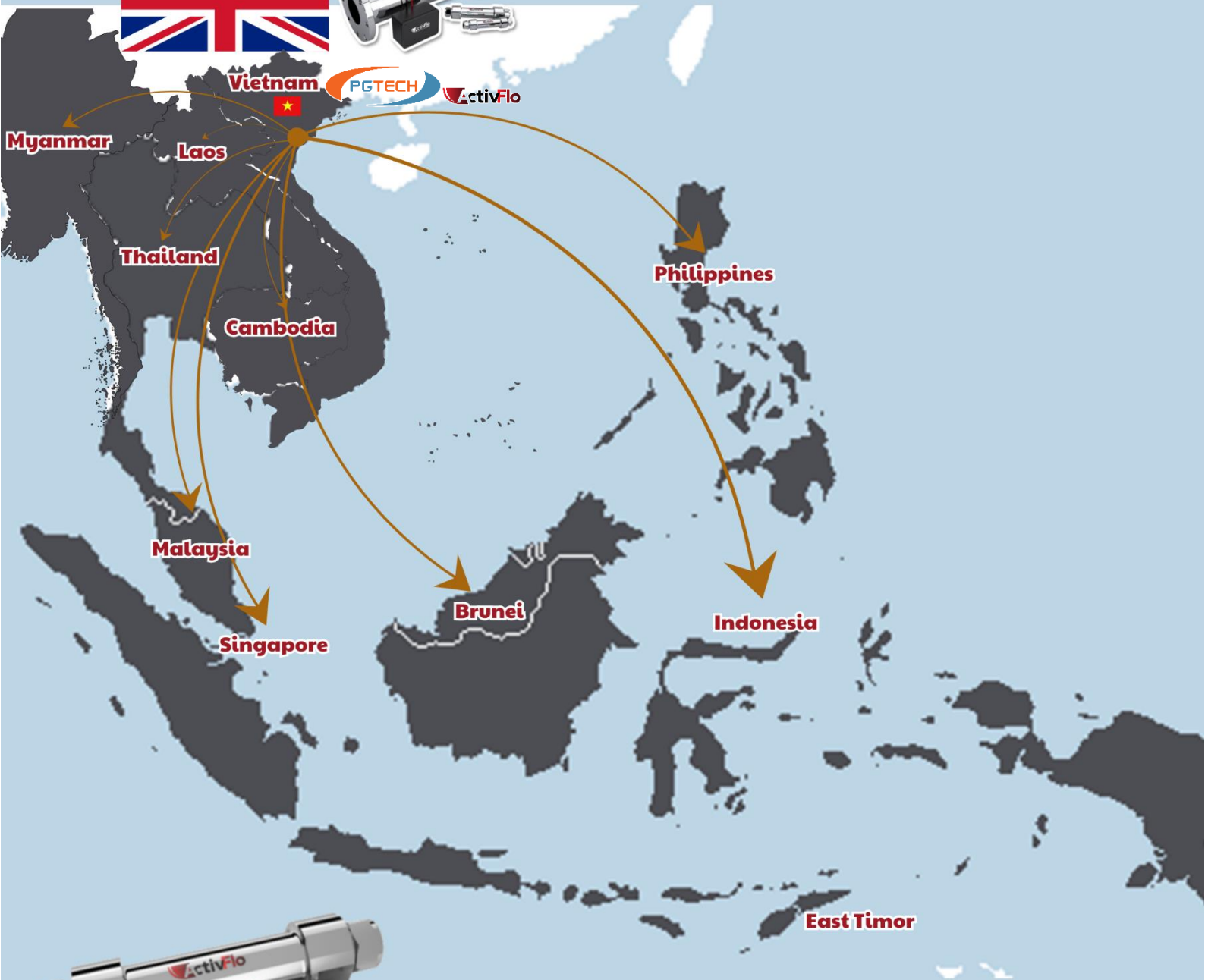




PRODUCT GUIDE
 The Domestic, Industrial,
 and Commercial solution
 to Hard water

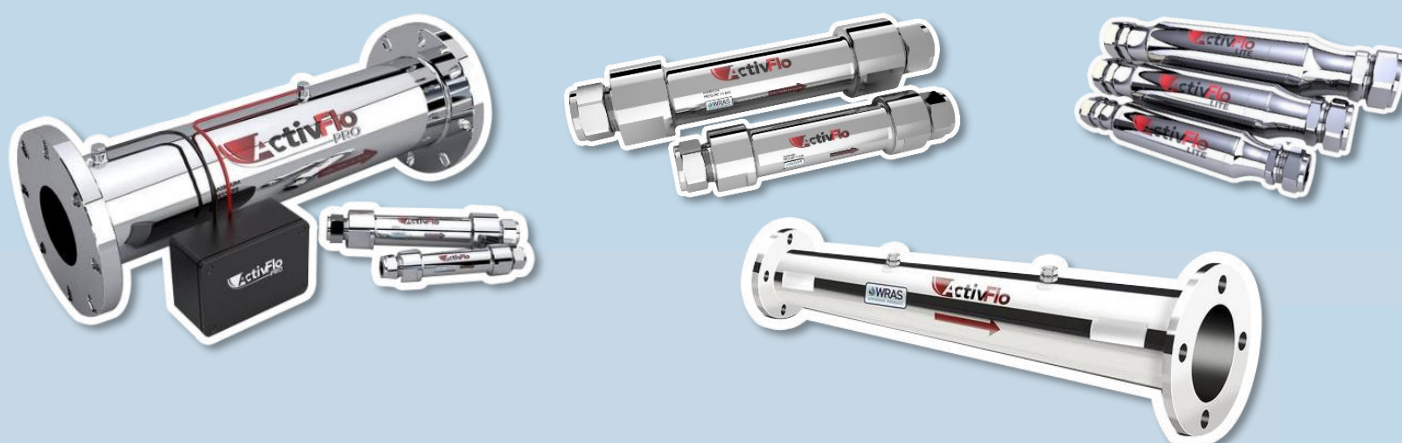


ActivFlo



UK MADE, WORLD RENOWNED

A. OVERVIEW OF ACTIVFLO WATER CONDITIONER - UK.....	page 3
I. ActivFlo for Domestic and Commercial application.....	page 4
II. ActivFlo Pro for Commercial and Industrial application.....	page 7
III. ActivFlo Standard for Household and Commercial application.....	page 9
B. HARD WATER AND ITS HARM.....	page 13
C. EFFECTIVENESS OF USING ACTIVFLO.....	page 16
I. Benefits of Using ActivFlo.....	page 16
1. Prevent the build-up of limescale.....	page 16
2. Remove the existing scale.....	page 16
3. Prevent pipe corrosion and extending equipment lifespan.....	page 17
4. Retain essential minerals in water.....	page 17
5. WRAS certified for use in drinking water.....	page 18
6. Environmental friendliness.....	page 18
7. Fully automatic operation.....	page 18
8. No maintenance required.....	page 18
9. Product lifespan can extend up to 50 years.....	page 18
II. Domestic application.....	page 18
III. Commercial application.....	page 19
IV. Industrial application.....	page 20
V. Agricultural application.....	page 21
D. COMPARISON OF HARD WATER TREATMENT METHODS.....	page 22
E. ACTUAL INSTALLATION IMAGES.....	page 24



A. OVERVIEW OF ACTIVFLO WATER CONDITIONER - UK



UK Water Hardness Map

- Soft water: 0 - 100 mg/l as calcium carbonate
- Hard water: 100 - 200 mg/l as calcium carbonate
- Very hard water: 200+ mg/l as calcium carbonate

In the United Kingdom, over 60% of the land area is classified as hard water, with only some areas, such as Scotland, the Lakes, and the western reaches of Wales, experiencing slightly softer water. This means that most families in the UK are dealing with limescale build-up issues in kettles, showers, taps and pipes as well as household and industrial machinery. This challenge prompted INTA to research and successfully develop the ActivFlo hard water treatment device to address the problem of hard water (calcium-rich water). To date, ActivFlo is being widely used in many countries around the world.

Well, here's some good news. You don't!

In the past, the only method of dealing with hard water was to invest many hundreds, perhaps even thousands of pounds installing a water softening device. These were bulky and required regular infusions of salt to keep them working effectively.

Also, when installing a water softener, a separate drinking water line must be maintained in order to avoid excessive sodium consumption. Additionally, the reality indicates that if the reconstitution process is not carried out properly while the water hardness is high, water softening through Cation salt reconstitution technology will not yield satisfactory results.

Now, there's no need for such an expensive and complicated approach, because technology has moved on.

ActivFlo is the new, inexpensive way to condition the water coming into your house. It stops scale formation in every part of your water system. It even helps remove existing scale.



I. ActivFlo for Domestic and Commercial Applications

ActivFlo Water conditioner- Specialized for Domestic and Commercial water

ActivFlo features the latest technology in the battle against limescale build-up in water piping systems for domestic, commercial and industrial applications from INTA - UK

ActivFlo is available complete with a range of different connection types and sizes to suit any application where the protection against limescale build up is paramount.

How does ActivFlo work?

In hard water, there is excessive calcium and bicarbonate ions which bind together during heat or pressure changes to form calcium carbonate hard scale

As this water passes through the ActivFlo, two things happen. It's exposed to a small electrical charge on the surface of the alloy and it also experiences a drop in pressure, caused by the alloy's shape. These actions cause the calcium and bi-carbonate to form an insoluble aragonite crystal. These crystals, microscopic in size, are smoother and do not have the same bonding properties as calcium carbonate.

This means that they can't stick to pipework, heating elements, shower heads etc. They remain suspended in the water and ultimately flow out through the drain

And because ActivFlo is not a filter, the water retains all its minerals, making it just as good to drink

For more information about how ActivFlo works, please visit: <https://www.youtube.com/watch?v=zbHwZmE3lcc>

Already have limescale in your system? No problem.....

ActivFlo treatment improves the solubility of water, freeing up space to absorb existing calcium carbon deposits. Conditioned water will slowly absorb existing limescale deposits over time. With ActivFlo water conditioner, we are not adding or removing anything from the water. The calcium is still in the water, but is no longer in solution. Instead, it was precipitated out into suspension in its carbonate form

The speed of the process depends on a number of factors, such as the amount of scale in the system, volume of water used, and the water flow

However, over a relatively short period, any existing deposits will start to soften and can be easily removed if they are in exposed situations like shower heads, taps etc.

The electrostatic catalysis of the ActivFlo core on the mineral particles in the water source will transform and release these minerals as the water passes through the terminal

What are the benefits of using ActivFlo?

- ✓ ActivFlo supplies whole house protection
- ✓ Actively reduces the buildup of limescale inside pipework, heating components and appliances throughout domestic properties
- ✓ Protect sanitary equipment
- ✓ Improve system efficiency
- ✓ Improve domestic water source
- ✓ Prevent irritation, skin allergies, hair and fabric lint
- ✓ No maintenance required
- ✓ No electrical connections needed
- ✓ Up to 15 years manufacturing warranty
- ✓ Help to reduce fuel and maintenance costs



ActivFlo Commercial High Class

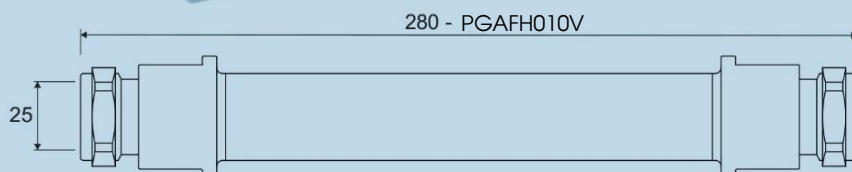
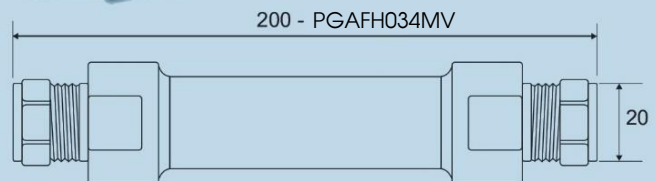
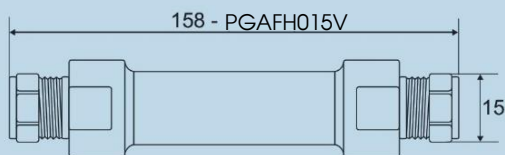


**Catalytic core (Alloy):
Precious and semi-precious alloys**

Specification guide for Domestic sizes

Below, you will find the technical details required to enable you to choose a suitable ActivFlo for your property. Firstly, the incoming flow rate to the property must be checked. Once this is known, select the appropriate model, so that the flow rate in your property is within the optimum flow range shown.

Product code	PGAFH015V	PGAFH034MV	PGAFH010V
Description	DN15 ActivFlo High Class Domestic and Commerical	DN20 ActivFlo Commercial High Class	DN25 ActivFlo Commerical High Class
Optimum flow rate	7,5 - 22 ltrs/min	23 - 45 ltrs/min	45 - 74 ltrs/min



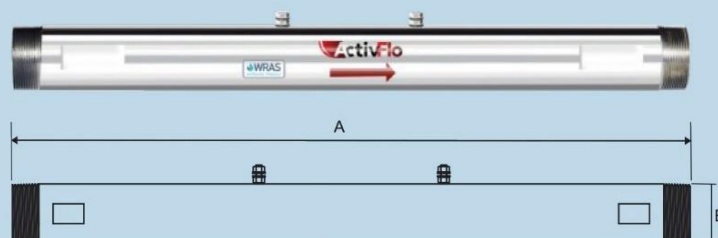
Specification guide for Commercial sizes

Select the right ActivFlo water conditioner by matching it to the water flow of your installation using the matrix below. Choose the model where the actual flow rate is as close as possible to the optimum rates shown. Select carefully as choosing the incorrect water conditioner may impair the functionality of the unit.

Product code	PGAFCH0D32V	PGAFCH0D40V	PGAFCH0D50V
Description	DN32 Male BSP ActivFlo Commercial High Class	DN40 Male BSP ActivFlo Commercial High Class	DN50 Male BSP ActivFlo Commercial High Class
Optimum flow rate	75 - 120 ltrs/min	120 - 170 ltrs/min	170 - 260 ltrs/min

Product code	PGAFCH0D65V	PGAFCH0D80V	PGAFCH0D100V
Description	DN65 Flanged ActivFlo Commercial High Class	DN80 Flanged ActivFlo Commercial High Class	DN100 Flanged ActivFlo Commercial High Class
Optimum flow rate	260 - 350 ltrs/min	360 - 680 ltrs/min	680 - 1260 ltrs/min

Product code	PGAFCH0D125V	PGAFCH0D150V
Description	DN125 Flanged ActivFlo Commercial High Class	DN150 Flanged ActivFlo Commercial High Class
Optimum flow rate	1260-1820 ltrs/min	1825-3500 ltrs/min



Part code	Dimension A	Dimension B
PGAFCH0D32V	550mm	1½" BSP
PGAFCH0D40V	550mm	1½" BSP
PGAFCH0D50V	550mm	2" BSP
PGAFCH0D65V	550mm	2½" BSP



Part code	Dimension A	Dimension B
PGAFCH0D80V	850mm	3" flanged
PGAFCH0D100V	850mm	4" flanged
PGAFCH0D125V	850mm	5" flanged
PGAFCH0D150V	850mm	6" flanged

II. ACTIVFLO PRO FOR COMMERCIAL AND INDUSTRIAL APPLICATIONS

ActivFlo Pro Impressed Electrolytic Catalytic Technology

Introducing the ActivFlo Pro from Inta - UK, suitable for Industrial, Commercial and Agriculture Agricultural operations.

Featuring the latest technology to help in the battle against limescale build-up in establishments and systems.

Supplied as standard with male BSP or flanged connections to suit most commercial pipework sizes and a low voltage power regulator for an increased performance level



The power supply delivers a permanent electrical field which is preferred by many water treatment companies, as the field can be measured and the treated water stays treated for longer. Operation of ActivFlo Pro can also be incorporated into modern Building Management systems.

The device delivers an electrical field within the chamber casing and turbulence of the water through a specially designed catalytic chamber. The effect is to make the calcium carbonate crystals reform as the much smaller and smoother aragonite crystal.

After water is treated by ActivFlo Pro, quality of the water is effectively improved.

Take a look at the before and after photographs and you can see that the ActivFlo Pro Conditioner eliminates the cohesion that exists between the mineral particles in the water.

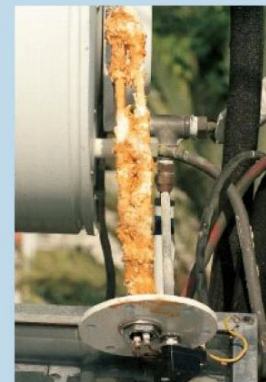
The mineral particles in the photographs have been precipitated from 'the same water sample' with a reading of 750mg/l hardness.

Note how the particles are bound together before the ActivFlo Pro treatment and "separated" afterwards.

Scientific analysis has shown that the mineral particle size has reduced from 100-400 microns for untreated water, to 30 microns in the treated water

The major advantage of using ActivFlo Pro is that the treated water retains its conditioned state, compared with the more usual magnetic water treatment devices.

In addition, after treatment, the increased solubility of the water will slowly loosen and dissolve existing scale from the system. Once the system stays clean, when installed and maintained correctly, ActivFlo Pro will also work stably and last a lifetime. The product will be warranted by Inta – UK.



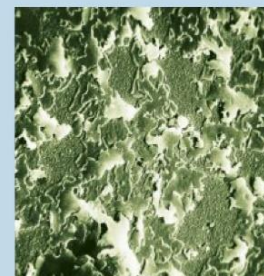
Before

Limescale build-up on heating equipment can double energy consumption



After

After 6 weeks of installation ActivFlo, limescale has removed



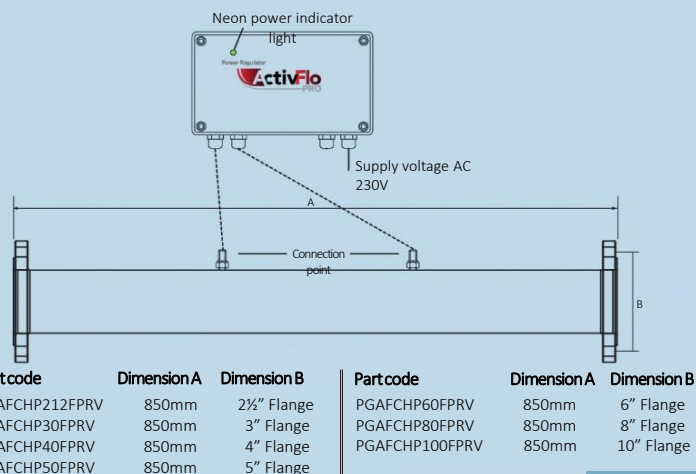
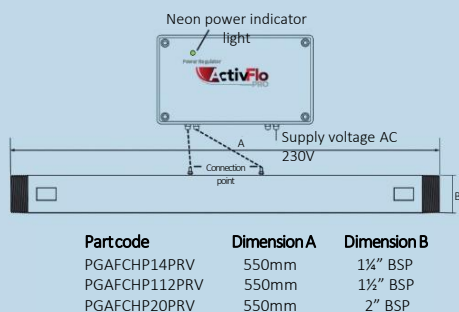
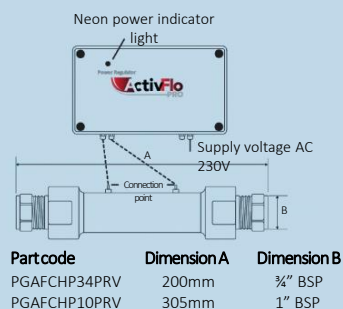
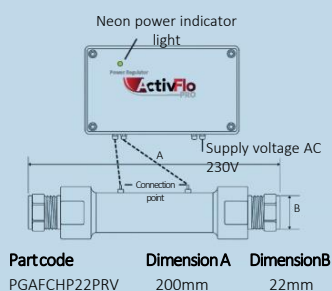
Electron microscope 1440 x magnification



Specification guide for ActivFlo Pro

Select the right ActivFlo Pro water conditioner by matching it to the water flow of your installation, using the matrix below. Select carefully as choosing the incorrect water conditioner may impair the functionality of the unit. ActivFlo Pro requires a 230V AC electrical connection

Product code	PGAFCHP22PRV	PGAFCHP34PRV	PGAFCHP10PRV
Description	DN20 ActivFlo Commercial High Class Pro & Power Regulator	DN20 Male ActivFlo Commercial High Class Pro & Power Regulator	DN25 Male ActivFlo Commercial High Class Pro & Power Regulator
Optimum flow rate	22 - 45 ltrs/min	22 - 45 ltrs/min	45 – 74 ltrs/min
Product code	PGAFCHP14PRV	PGAFCHP112PRV	PGAFCHP20PRV
Description	DN32 Male BSP ActivFlo Commercial High Class Pro & Power Regulator	DN40 Male BSP ActivFlo Commercial High Class Pro & Power Regulator	DN50 Male BSP ActivFlo Commercial High Class Pro & Power Regulator
Optimum flow rate	75 – 120 ltrs/min	120 - 170 ltrs/min	170 – 260 ltrs/min
Product code	PGAFCHP212FPRV	PGAFCHP30FPRV	PGAFCHP40FPRV
Description	DN65 Flanged ActivFlo Commercial High Class Pro with Power Regulator	DN80 Flanged ActivFlo Commercial High Class Pro with Power Regulator	DN100 Flanged ActivFlo Commercial High Class Pro with Power Regulator
Optimum flow rate	260 - 350 ltrs/min	360 – 680 ltrs/min	680 - 1260 ltrs/min
Product code	PGAFCHP50FPRV	PGAFCHP60FPRV	PGAFCHP80FPRV
Description	DN125 Flanged ActivFlo Commercial High Class Pro with Power Regulator	DN150 Flanged ActivFlo Commercial High Class Pro with Power Regulator	DN200 Flanged ActivFlo Commercial High Class Pro with Power Regulator
Optimum flow rate	1260-1820 ltrs/min	1825-3500 ltrs/min	3500-5600 ltrs/min
Product code	PGAFCHP100FPRV		
Description	DN250 Flanged ActivFlo Commercial High Class Pro with Power Regulator		
Optimum flow rate	6660-9960 ltrs/min		



ActivFlo Standard LITE

STANDARD WATER CONDITIONER SERIES

III. ACTIVFLO STANDARD FOR HOUSEHOLD AND COMMERCIAL



- ✓ PREVENTS LIMESCALE
- ✓ IMPROVES WATER QUALITY
- ✓ OVER 10 YEARS PRODUCT LIFE EXPECTANCY



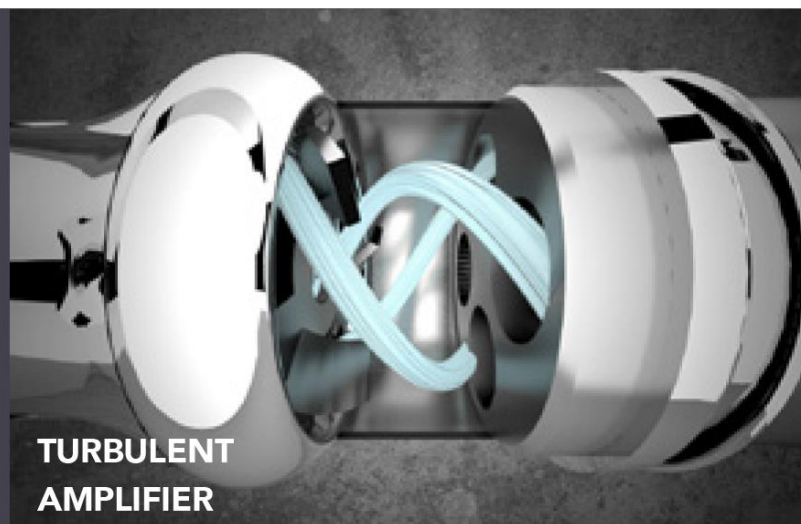
INTRODUCTION

ActivFlo Standard is the latest addition to the range of ActivFlo Water Conditioners. It has been specifically designed to help combat against limescale build-up in homes and systems with hard water supplies

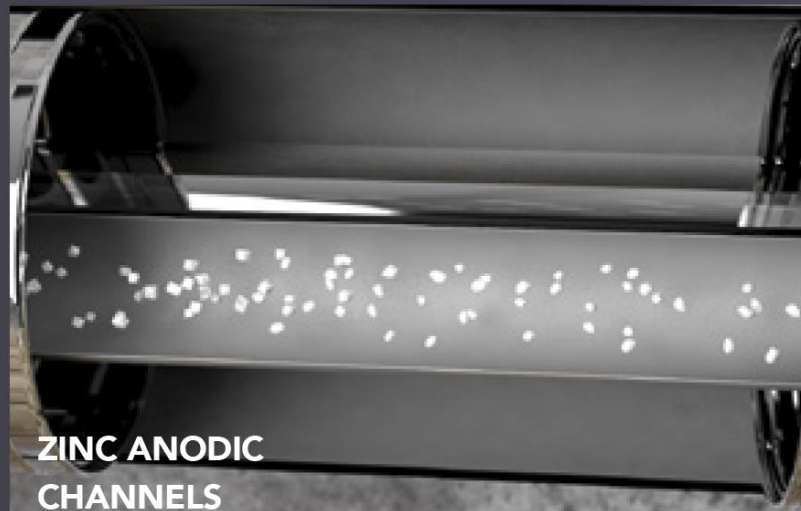
HOW DOES ACTIVFLO STANDARD WORK?

Water enters the ActivFlo Standard and is immediately greeted by its revolutionary turbulent amplifier which sends the water into a spinning motion to help ensure maximum efficiency of the water being processed

The water is then sent through a series of Zinc anodic channels, which when combined with ActivFlo's natural electrolytic process helps change the calcite mineral to the smooth, nonadhering Aragonite. This Aragonite crystal has a smooth external surface which makes it unlikely to adhere to domestic pipework, boilers and appliances. It remains in suspension until it is then passed down the drain. If at any point these particles made their way onto a surface, they become much easier to remove without any need for cleaning agents or aggressive cleaning action.



**TURBULENT
AMPLIFIER**



**ZINC ANODIC
CHANNELS**

DID YOU KNOW ABOUT HARD WATER?

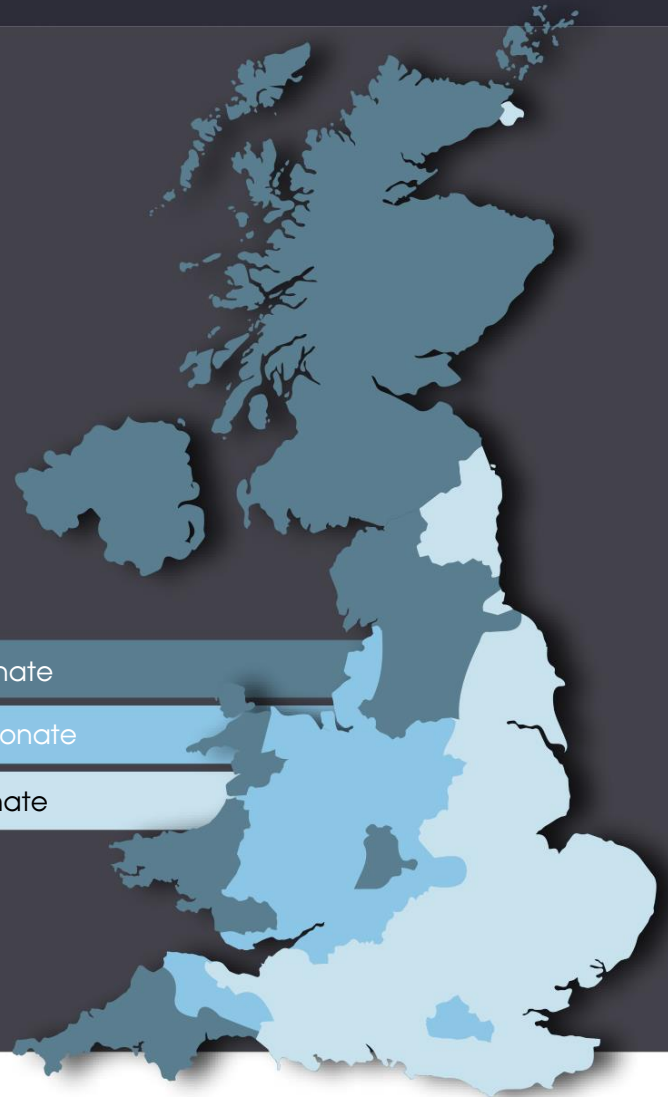
DID YOU KNOW?

By fitting an ActivFlo water conditioner, installers can improve hardness compliance, as the Building Compliance Guide states the following: "Where the main total water hardness exceeds 200 parts per million, provision should be made to treat the feed water to water heaters and the hot water circuit to reduce the build-up of limescale".

LIMESCALE IN THE UK

Hard water is measured by the amount of parts per million (PPM) of calcium and magnesium salts in the water supply. Limescale build-up in the supply can reduce flow rates, cause blockages, reduce system efficiency and leave hard to remove scale stains on external surfaces.

Recent research has suggested that just 1.6mm of scale in a heating system can reduce the efficiency of the system by 12%.



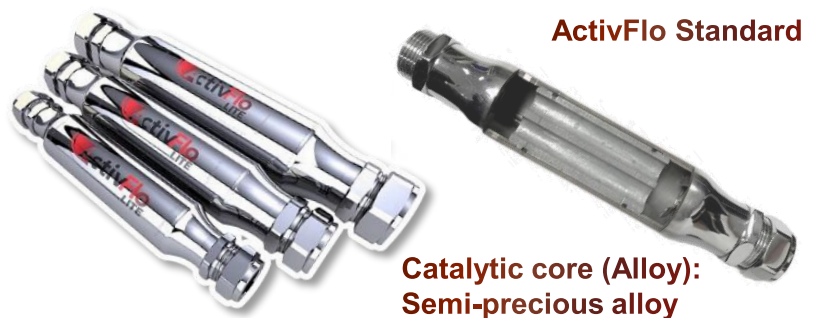
SOFT WATER	0-100 mg/l as calcium carbonate
HARD WATER	100-200 mg/l as calcium carbonate
VERY HARD WATER	200+ mg/l as calcium carbonate

INTRODUCTION TO ACTIVFLO STANDARD

We recommend that ActivFlo Standard should be installed on the incoming cold water mains to the property, before any draw-off points, to ensure whole house protection. The flow rate should be kept between the optimum and maximum flow rates according to the allowable flow rate index of the device. This ensures expected performance levels can be met.

PRODUCT RANGE

PGAFS025V	ActivFlo Standard DN25
PGAFS020V	ActivFlo Standard DN20
PGAFS015V	ActivFlo Standard DN15

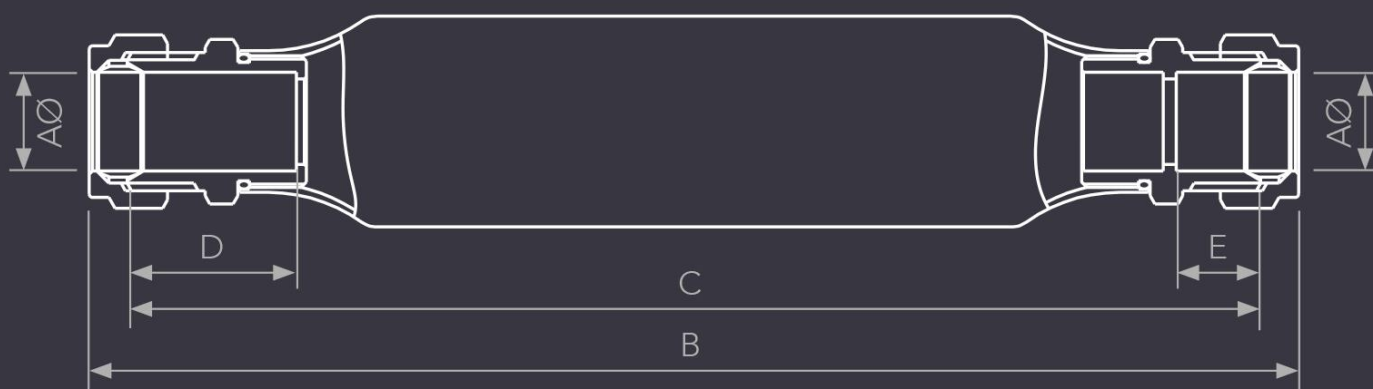


FLOW RATE SELECTION TABLE

ActivFlo Standard operates best at its optimum flow rate. The maximum flow rate is the most water passing through the valve at which it still remains effective.

CODE	PGAFS015V	PGAFS020V	PGAFS025V
CONNECTION (MM)	DN15 ActivFlo Standard	DN20 ActivFlo Standard	DN25 ActivFlo Standard
MAXIMUM FLOW RATE (LTRS/MIN)	36	47	132
OPTIMUM FLOW RATE (LTRS/MIN)	12	16	44

DIMENSION



Dimension	PGAFS015V	PGAFS020V	PGAFS025V
AØ	15	22	28
B	186	222	270
C	174	207	253
D	26	26	26
E	13	13	13

Note on installation of ActivFlo Standard:

- + ActivFlo Standard can be installed on both ends of the water inlet, without any arrow direction
- + Use genuine DN20 and DN25 copper thread connections to connect to PCV and PPR plastic pipes
- + Carefully check the flow rate before installing ActivFlo



B. HARD WATER AND ITS HARM

What is the limescale?

Limescale is a hard substance colored white as chalk, mainly made up of calcium carbonate in water and commonly found in hard-water areas. Hard water is difficult to wash, soap cannot be foamed and leaves a light layer of scum on the surface of the water. Some common detergents are also less effective when used with hard water, that means clothes may look dirty even after they have been washed, plates and glassed also become gradually dull over time. For people with eczema or sensitive skin, hard water causes dryness and irritation.



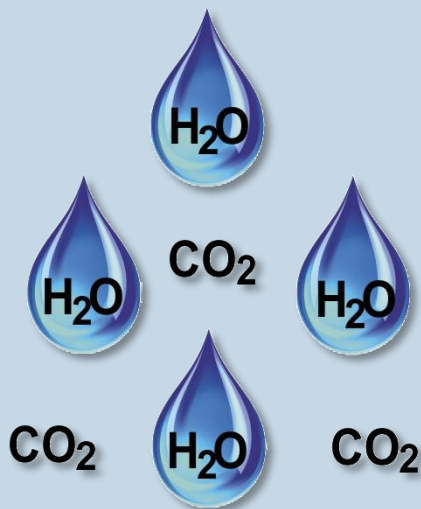
The biggest problem is that if hard water is heated over 55°C or not treated, the dissolved minerals in it will be solidified. These solidified minerals are limestone, and it is a serious problem in your home. As you can see, limescale usually appears on shower heads, causes unsightly stains on the surface, and is difficult to remove.



However, the effects that can be seen with the eyes are nothing in comparison with the effects that we cannot see. On average, per liter of water contains 300mg dissolved minerals, so one household of 4 people may build up to 70kg limescale in a year. A significant amount of them is inside the pipes of the central heating system, solar system, water heater, etc., and cause block them.

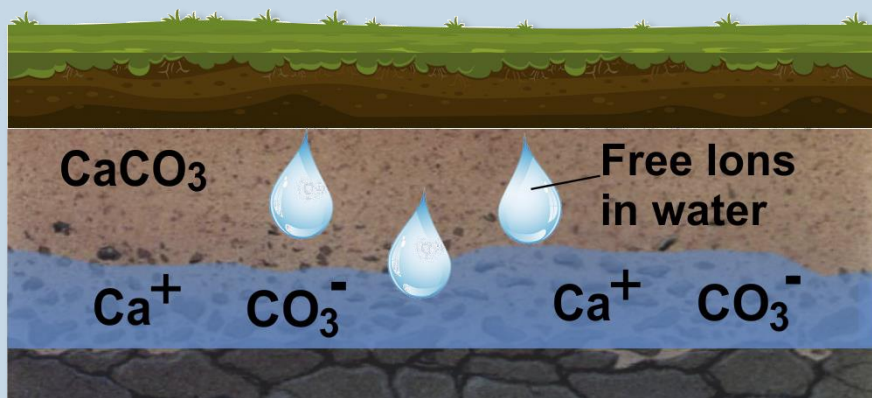


The limescale adheres to the parts of the hot water system, washing machine, and dishwasher similar to the way it adhere to the kettle, cause consume more energy. In fact, water specialists have indicated that one layer of limescale, although only 1.6mm in thickness covers the heating system, also cause reduce the effective of 12%. This means you will consume an extra approximately six millions Dong of energy cost and make the appliances easy to spoil.



The way Calcium Carbonate forms in our water

Stormwater is basically soft water. When it falls, it will combine with CO_2 in the air to form a weak acid. When it soaks into groundwater, it will dissolves the limescale in the geology, and combines with the elements to form Calcium Carbonate in the system.

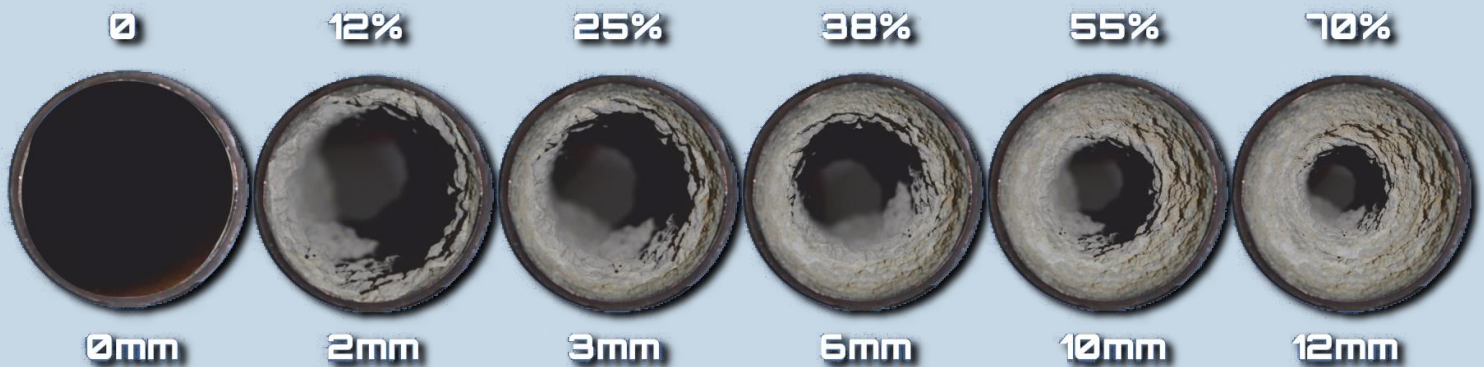


Hard Water



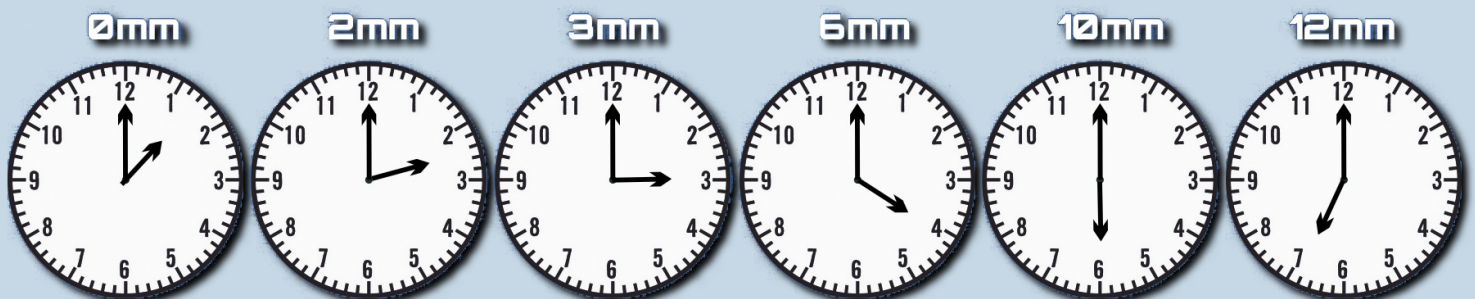
The increased cost when the system appears limescale

The percentage of energy is wasted



The rate according to scale thickness

The above example is the official figures of Europe that show the waste of energy due to limescale. If the rate of iron or silica is high, the wasted energy will be double increased.



Because limescale adheres to the heating appliance, the water heater (boiler) needs more time to heat the water used one day.

The research indicated that only 3mm of limescale in thickness also reduces the effective of energy of 25%, and in the hard water area (200-300ppm), the limescale may be formed on the heat exchanger only within 6 months.

With the heat exchanger of the heating system, it takes about half of hour to heat household water for one day.

Only with 2mm of limescale in thickness, the heating system needs to run an extra of 1 hour to heat the water, so it wastes a significant amount of energy.

C. EFFECTIVENESS OF USING ACTIVFLO

I. BENEFITS OF USING ACTIVFLO

With electrolysis technology with a turbulent flow amplification coil made from a magnetic catalytic alloy patented of Inta – UK, ActivFlo has received much high appreciation about the convenience and optimum effective in hard water treatment through out many years used in many big and small projects in Europe and around the world. There are many practical benefits when using this product including:

1. Prevent the build-up of limescale

With electrolysis technology, the water flow passing through the ActivFlo Hard Water Treatment Unit will be exposed to a small electrical charge on the surface of alloy and also experienced a drop in pressure, caused by the alloy's shape.

ActivFlo Commercial High Class



Alloy: Precious and semi-precious alloys

2. Remove the existing scale

Magnetized water molecules passing through the scale will cause the scale to become magnetized and will erode over time. Within 4 - 6 weeks of use, the existing scale in the pipes will be completely removed by the ActivFlo water conditioner.



Before installing ActivFlo

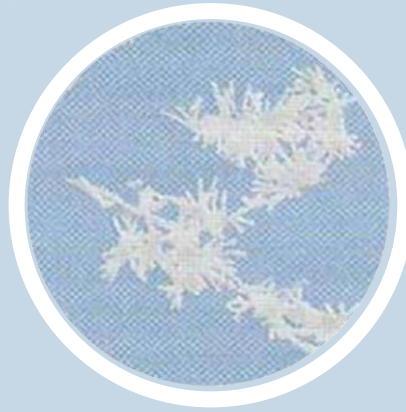


*After installing ActivFlo,
Using from 4 to 6 weeks*

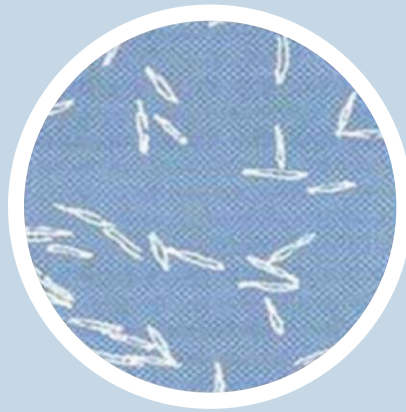
3. Prevent pipe corrosion and extending equipment lifespan

Aragonite crystals formed when hard water passes through the ActivFlo water conditioner are microscopic in size, smooth, and don't have the same bonding properties as calcium carbonate. This means that they can't stick to pipework, water heaters, shower heads, etc. They remain suspended in the water and ultimately flow out through the drain. Therefore, it helps pipework to prevent corrosion because of hard water, the appliances also operate stably with the prolonged lifetime and high efficiency because of not existing scale.

Additionally, these Aragonite crystals create a protective film on the metal surface, that prevents the metal from corrosion and prolongs the lifetime of the appliances. We can list some appliances such as thermistor wire, boiler's heating rod, boiler, machinery surface, pipework, etc.



Calcium crystals



Aragonite crystals



4. Retain essential minerals in water

The ActivFlo Pro is not a filter, it is a water conditioner, that treats hard water, water contaminated with calcium minerals. It does not add any chemicals to the system to change the state of water but only acts in the form of physical interactions to change calcium and magnesium minerals to make it softer. Therefore, the water retains all its good minerals.

The water contains minerals, and preserving minerals is extremely necessary for the value of the water source. Hence, ActivFlo is considered as a solution combined with the water filter, installed in front of the main water source to protect the filter cores of water filters, while effectively retaining and preserving the minerals.

5. WRAS certified for use in drinking water

6. Eco-friendly

7. Fully automatic operation

8. No maintenance required

9. Long lifetime with up to 30 years+



II. DOMESTIC APPLICATIONS

ActivFlo can be used in domestic applications to protect your entire home.

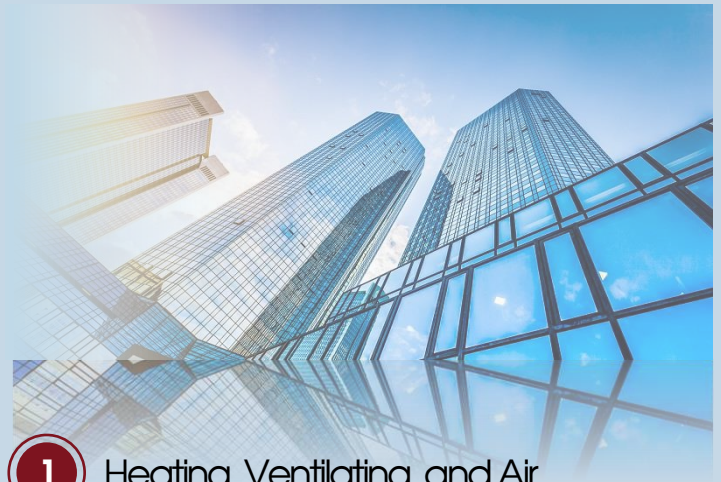


III. COMMERCIAL APPLICATIONS

ActivFlo also has many common applications in commercial with different appliances and small/big systems, such as:



- ⑥ Swimming pool and Spa
- ⑦ Coffee and hot drink maker
- ⑧ Humidifier
- ⑨ Ice maker



- ① Heating, Ventilating, and Air Conditioning(HVAC)
- ② Food service equipment
- ③ Swamp cooler
- ④ Steam and air-conditioning fan
- ⑤ Autoclave



- ⑩ Washing machine
- ⑪ Dishwasher
- ⑫ Car washing machine
- ⑬ Hygiene cleaning equipment

IV. INDUSTRIAL APPLICATION

Regarding industrial application, this product is especially effective for applications of boiler, Chiller Cooling Tower System, Chiller Water Supply System, etc. to treat scale problems that cause the corrosion of pipework, machinery, the waste of energy consumption due to the operation of boiler system and industry in general. ActivFlo is proposed to be installed in any factories where hard water problems need to be solved. Some typical applications are as follows:



Installation for industrial applications

V. AGRICULTURAL APPLICATIONS


Used in large-scale agricultural and garden irrigation systems (golf courses, soccer fields), ActivFlo makes water easier to dissolve and enter the tree's capillaries, and helps the tree to be absorbed better, so:



Water conditioner solution to hard water (limescale contaminated water) to improve crop productivity



D. COMPARISON OF HARD WATER TREATMENT METHODS

Method/ Criterion		Chemical substances	Ion-exchange softeners	RO water filters	Electromagnet ic fields
The effective of scale treatment	Efficient, stable	Instantaneously processed	Can't remove the existing scale	Can't remove the existing scale	Low efficiency in industrial applications
Using period	Over 30 years, maybe up to 50 years	Need to use frequently	5 - 7 years	5 - 7 years	5 - 10 years
Cost	You only need to invest once time. The bigger the appliance, the more economical it is, you may be payback within 1-2 years	Operation cost is very costly and increases over time	The investment cost is quite costly, high operation cost, you need to buy reconstituted salt and replace Cation particles (about 2-3 years/times)	The investment cost is very costly. High operation cost includes regular filter cores replacement cost, electricity consumption, water treatment for RO system cost	Equivalent investment cost. Average operating costs (electricity consumption, regular maintenance)
Warranty period	5 - 15 years	No	1 - 2 years	1 - 2 years	3 - 5 years
Manual/Auto matic operation	Automatic	Manual/ Semi- automatic	Manual/ Semi- automatic	Manual/ Semi- automatic	Automatic
Maintenance cost	No	Very high	High	Very high	Average
Maintenance	No	6 months - 1 year/times	Reconstitute salt regularly	Yes	No
Installation	Compact	N/A	Bulky, complicated	Bulky, complicated	Compact, depend on the electricity source
Optimal performance	Performance is optimized, operation is extremely stable	The system operates quite stable but still be built up the scale	Can't remove the existing scale, can't improve performance	Can't remove the existing scale, can't improve performance	Limited in treatment of high hardness and temperature, and the big system

E. ACTUAL INSTALLATION PHOTOS

PHOTOS OF PROJECTS USING THE ACTIVFLO WATER CONDITIONER



Installed for Mai Son Hotel in Tuyen Quang Province



Installed for a household in Tay Ho District, Hanoi City



Installed for households in Yen Bai Province



Installed for households in Hanoi City



Installed for RO Filter System in Chemical Factory in Hoa Binh Province



PHOTOS OF PROJECTS USING THE ACTIVFLO HARD WATER TREATMENT UNIT



Installed in Yen Bai Province



Installed in Son La City, Son La Province



Installed in Hung Yen Province



Installed in Hanoi City



Installed in Vung Tau Province



Installed in Thanh Hoa Province



Installed in Can Tho Province



Installed in Can Tho Province

PHOTOS OF PROJECTS USING THE ACTIVFLO WATER CONDITIONER



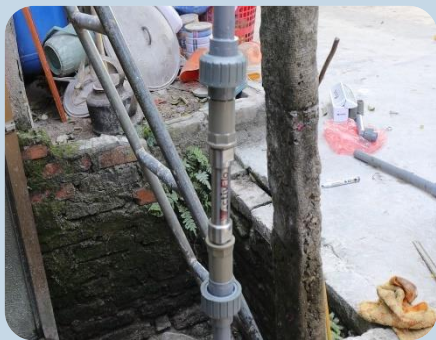
Installed in Bac Ninh Province



Installed for boilers



Installed for cooling tower and chiller system in a packaging manufacturing company in Hanoi



Installed for domestic water in Bac Giang Province



Installed for a farm in Bac Giang Province



Installed for solar battery washing system in Phu Yen



Installed for households in Can Tho Province



Installed for Japan's Sun Red River Building in 23 Phan Chu Trinh, Hoan Kiem District, Hanoi City



Installed for a company in Dong Nai Province

PHOTOS OF PROJECTS USING THE ACTIVFLO HARD WATER TREATMENT UNIT



Installed for water supply system



Installed for water supply system



Installed for agricultural irrigation system



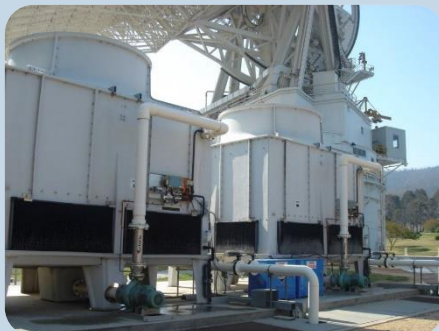
Installed for boiler's water supply system



Installed for drilled well



Installed for the factory's water supply system



Installed for the factory's Chiller system and Cooling tower



Installed for agricultural irrigation system



PHẢN HỒI TÍCH CỰC TỪ NGƯỜI ĐÃ SỬ DỤNG SẢN PHẨM

Mr. Le Tien Vu – Xuan Son village, Hoang Son commune, Hoang Hoa district, Thanh Hoa province.

"I was planning to install Cation beads using reconstituted salt, but after learning about the ActivFlo technology, I decided to use it, and I've had a great experience. Previously, when washing clothes, they became stiff and the colors faded quickly. I also experienced dry and itchy skin after showering. Now, all these issues have been resolved. I am very satisfied and will recommend this ActivFlo technology to many families around my neighborhood."

Mr. Tran Van Luan, no. 780 Le Loi Street, Quarter 5, Ward 1, Kien Tuong Town, Long An Province

"After researching and installing a high-end commercial ActivFlo, I found it to be excellent. No more scale build-up in the kettle and faucet. I have a house in Dong Da district - Hanoi, where there is a lot of lime scale build-up, I will continue to install another one there. Thank you to the company for providing effective solutions and advice."

Mr. Tran Trung, no. 72 Cho Rau Rua, Hung My commune, Cai Nuoc district, Ca Mau province

"My family installed ActivFlo standard with a flow rate of 1-2m³/hour, it works very well. Just the thought of having to maintain a costly and complicated filtration system makes me feel hesitant. After installing ActivFlo, I saw the value of its convenience, compactness, and simplicity. The effects of hard water in my house have been effectively overcome."

Mr. Nguyen Van Loang, Hung Phuc village, La Xuong commune, Krong Pa district, Gia Lai province

"I asked very carefully to choose a high-end commercial ActivFlo with a flow rate of approximately 2m³/hour, and received very enthusiastic and careful advice from PGTECH. I have also taken all product codes and serial numbers to ensure genuine products. After installing it for a few days, I could feel the difference in effectiveness and realized that it was the right decision to use ActivFlo. I called the INTA representative in Hanoi to share about the effectiveness after installation. I have already recommended it to my friends in Gia Lai."



The hard water treatment technology is only available in ActivFlo of UK.

ActivFlo may be considered as the best hard water treatment technology in the world nowadays, because it has unique patented technology, electrolytic catalyst technology, creates a far more stable calcium carbonate crystal which lasts much longer, long product's lifetime. Only one ActivFlo can be used for the entire home, building, factory, etc. which helps to save the investment cost effectively, especially without any maintenance cost after installation. ActivFlo has affirmed its quality because there were millions of devices installed around the world over 40 years and also affirmed its position as the most advanced and effective hard water treatment technology. In Vietnam, tens of thousands of ActivFlo have been installed across the country and operated effectively. This affirmed that ActivFlo is becoming the number one technology of hard water and limescale contaminated watertreatment in the world and Southeast Asia as well.

NOTES

.....

.....

.....

.....

.....

.....

.....

.....

.....

.....

.....

.....

.....

.....

.....

.....



MAP OF HARD WATER AREAS IN THE UK

Soft water	0 - 100 mg/l canxi cacbonat
Hard water	100 - 200 mg/l canxi cacbonat
Very hard water	200+ mg/l canxi cacbonat

DOMESTIC, COMMERCIAL, INDUSTRIAL, AND AGRICULTURAL SOLUTION TO HARD WATER

DISTRIBUTOR:

ADDRESS:

TEL:

WEBSITE:



Simple makes different

PGTECH COMPANY LIMITED

Office address: 3rd Floor, C14-CT1 Building,
To Huu Street, Trung Van Ward,
Nam Tu Liem District, Hanoi City

Registered address: No 12, Lane 28,
Quang An Ward, Tay Ho District,
Hanoi City, Vietnam

(W): www.pgtech.com.vn

(E): sales@pgtech.com.vn

(T): 024 73 023 588

(H): 0962 875 986

YouTube Chanel: PGTECH VIETNAM