



HEADLINE

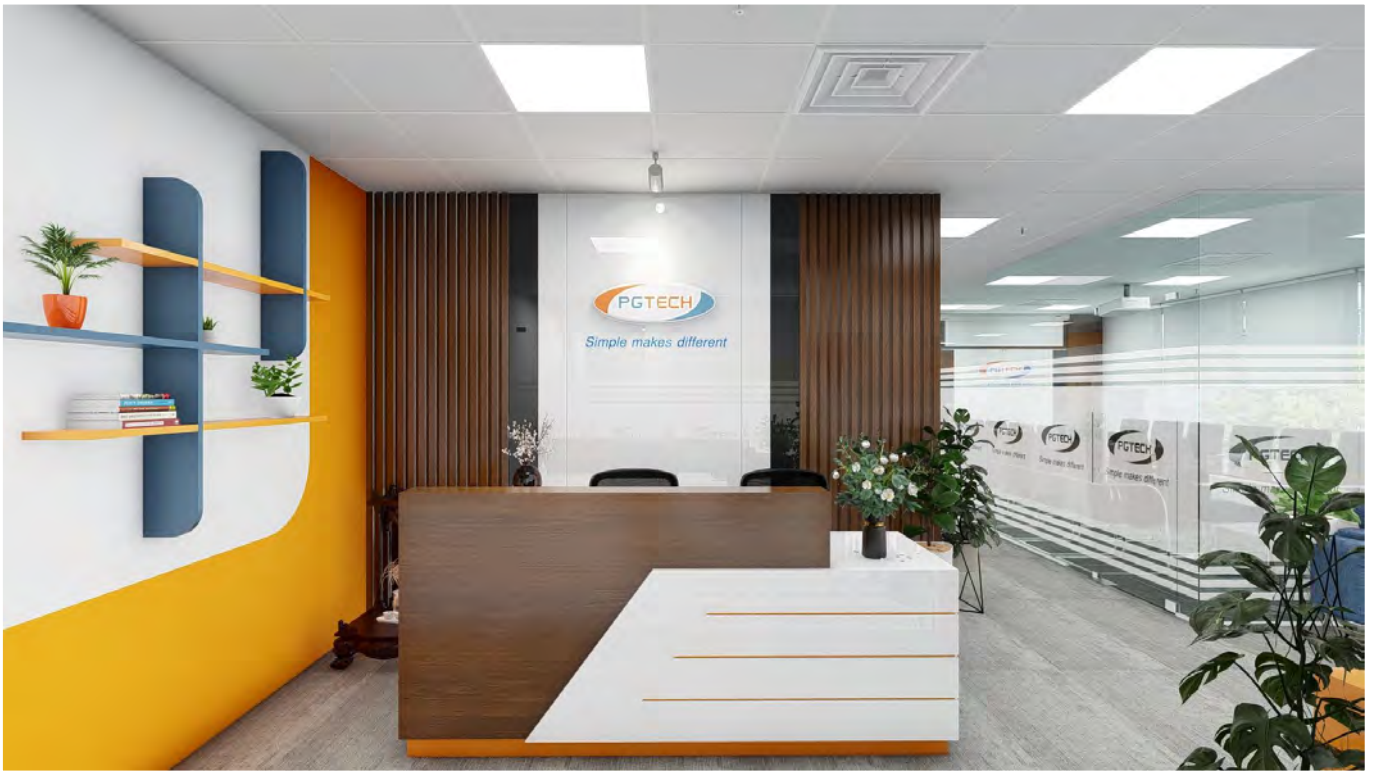
B R O C H U R E

PGTECH GROUP LIMITED

Office address: 3rd Floor, C14-CT1 Building, To Huu Street, Dai Mo Ward, Hanoi City.

Registered address: No 12, Lane 28, Tay Ho Ward, Hanoi City, Vietnam

Tel: +84-24-7302 3588 - **Email:** sales@pgtech.com.vn - **Website:** pgtech.com.vn



Solutions to Better Values

SOLUTIONS PROVIDER FOR M&E SYSTEMS



TABLE OF CONTENTS

1. Open letter	page 1
2. Company profile	page 2
3. Organizational chart	page 3
4. Major brands and Business partners	page 4
Typical brands	page 4
Typical investors	page 5
Typical M&E contractors	page 6
5. Manual valves	page 7
6. Pressure reducing valves	page 9
7. Safety valves	page 11
8. Float valves	page 13
9. Water hammer cushion	page 15
10. Steam valves	page 17
11. Industrial valves for oil, gas & liquid (API)	page 21
12. Balancing valves	page 23
13. Characterized water control valves	page 25
14. Characterized steam control valves	page 27
15. Flexible joints	page 29
16. Vibration isolation solutions	page 31
17. Solutions for HVAC	page 33
18. Expansion vessels	page 37
19. Buffer vessels/tanks	page 39
20. Water heaters	page 41
21. Solution for heating system (Heating tanks, boilers...)	page 43
22. Heat pump solutions for heating and cooling systems	page 47
23. Fire fighting valves & equipment	page 51
24. Mechanical water meters	page 57
25. Temperature and pressure gauges	page 59
26. Electromagnetic and building airflow meters	page 61
27. Specialized valves for water heating systems	page 63
28. Damper actuators	page 65

TABLE OF CONTENTS

29. Sensors	page 67
30. Hard water treatment solution Activflo	page 69
31. Solutions for polluted water treatment	page 71
32. Acoustic pipe & potable/ domestic water pipe	page 73
33. Other products	page 75
34. Cooperative activities	page 77
35. Warehouse capacity	page 79
36. Realistic images	page 80
37. Typical projects	page 83
Apartments, commercial buildings, hotels, resorts	page 83
State agencies and enterprises	page 90
Factory projects, export processing zones	page 92

Solutions to Better Values

Solutions to Better Values

PGTECH

OPEN LETTER

Dear valued customers!

First of all, PGTECH would like to send our best regards and wishes to you all. We hope that you will be getting more and more developed.

As an experienced M&E solution provider and authorized distributor of famous global brands from industrialized countries such as Europe, G7 and Korea etc., we offer a wide range of solutions for HVAC, water supply, fire-fighting protection and prevention, steam, gas, and liquid systems. We are honored to be granted opportunities to collaborate with our valued clients in providing advanced M&E solutions for their critical projects.

For ages of operation in the field of M&E equipment distribution, we have provided solutions for thousands of large and small projects across the country and the region. We have gained trust from the manufacturers and obtained a great supportive pricing policy, technical training and transfer, timely delivery schedule, after-sales services, etc. This has thus built a strong foundation for us to provide our best assistance and services for our clients and the entire M&E market in general. In addition, our strong financial and large warehouse capabilities with wide-range products and big volume of quantities are the concrete basis enabling us to fully catch up with project schedules and implement large-scale projects with the best quality assurance.

The world-wide prestigious core brands of PGTECH consist of Flamco (Netherlands), Belimo (Switzerland), Ecotherm (Austria), Enerblue (France), Techneau (France), Onicon (USA), PA (Slovakia/Germany), INTA (United Kingdom), TOZEN (JAPAN), Cidong (Korea), Paratech/Fesco (Korea), Samyang (Korea), Yooksong (Korea), PGSAFE (VIETNAM)... The key solutions and products include industrial valves (mechanical valves, control valves, balancing valves), flexible joints, vibration isolation solutions (Spring and rubber vibration isolators), degassing systems, pressurization systems, air & dirt separators, pressure tanks (expansion vessels), Buffer tanks (storage tanks/water heaters), heat pumps, sensors, display measuring devices, thermostats, fire protection equipment etc.

With our immense prestige and capability of distribution, we have been selected to participate in projects with a scale of hundreds of millions or even billions of US dollars, including the government, the private- invested and FDI projects in the economic sector. Moreover, we have strived to be a more trusted and highly appreciated supplier and distributor of M&E solutions to develop significant projects of the country. We are seeking to gain a long-term and effective collaboration with the prominent customers.

We sincerely express our gratitude to your trust and successful mutual collaboration in the past period and continue to strive to gain more efficient cooperation with you in coming time.

On Behalf of Company Director Board



[Signature]

Do Thi Thao
Deputy General Director

PGTECH GROUP LIMITED

Office address: 3rd Floor, C14-CT1 Building, To Huu Street, Dai Mo Ward, Hanoi City.

Registered address: No 12, Lane 28, Quang An Street, Tay Ho Ward, Hanoi City, Vietnam

Tel: +84-24-7302 3588 - **Email:** sales@pgtech.com.vn - **Website:** pgtech.com.vn

COMPANY OVERVIEW

- ✓ **Founded year:** 2016
- ✓ **Total number of employees:** > 30
- ✓ **Office area:** 300m²
- ✓ **Charter capital:** >1.000.000 USD
- ✓ **Working capital:** > 7.000.000 USD
- ✓ **Warehouse capacity:** 6.000.000 - 8.000.000 USD
- ✓ **Number of products in stock:** 600.000 - 600.000 pcs
- ✓ **Storage capacity (m³):** 600 - 1000m³ (Equipment of water, steam, air, fire fighting, liquid system)

SOLUTIONS

SOLUTIONS FOR HVAC SYSTEM

- ✓ Control valves
- ✓ Damper actuators
- ✓ Fire and smoke damper actuators
- ✓ Measuring equipment/Sensors
- ✓ High-capacity water heaters
- ✓ Electric boilers/water heaters
- ✓ Vacuum degassing systems
- ✓ Pressurization and degassing systems

WATER TREATMENT SOLUTIONS

- ✓ Hardwater Treatments
- ✓ 4 Micron electromagnetic filters
- ✓ Vacuum Degassers
- ✓ Air separators
- ✓ Dirt and air separators
- ✓ Grease and starch separators
- ✓ Oil separators (Oils)
- ✓ Stormwater treatment
- ✓ Waste water treatment station
- ✓ Other water filtration and treatment solutions

SOLUTIONS FOR WATER SUPPLY AND DRAINAGE SYSTEM

- ✓ Heat pumps
- ✓ Industrial hot water tanks
- ✓ Balancing/Industrial valves
- ✓ Air and dirt separators
- ✓ Expansion vessels
- ✓ Buffer tanks
- ✓ Pressurization and degassing systems
- ✓ Oil Separator for Garage and Workshop

STEAM AND AIR SYSTEM SOLUTIONS

- ✓ Steam traps
- ✓ Drain separators
- ✓ Steam pressure reducing valves
- ✓ Steam safety valves
- ✓ Manual valves for steam
- ✓ Thermal expansion joints
- ✓ Turnkey steam boiler/ hot water boiler system

SOLUTIONS FOR FIRE FIGHTING SYSTEM

- ✓ Sprinkler heads
- ✓ Flexible joints for Sprinklers
- ✓ Alarm valves, deluge valves
- ✓ UL/FM valves
- ✓ Flow switches
- ✓ Pressure switches
- ✓ Fire Hose, Fire Hose Nozzle
- ✓ Firefighting Foam Tank
- ✓ Gaseous Fire Suppression System

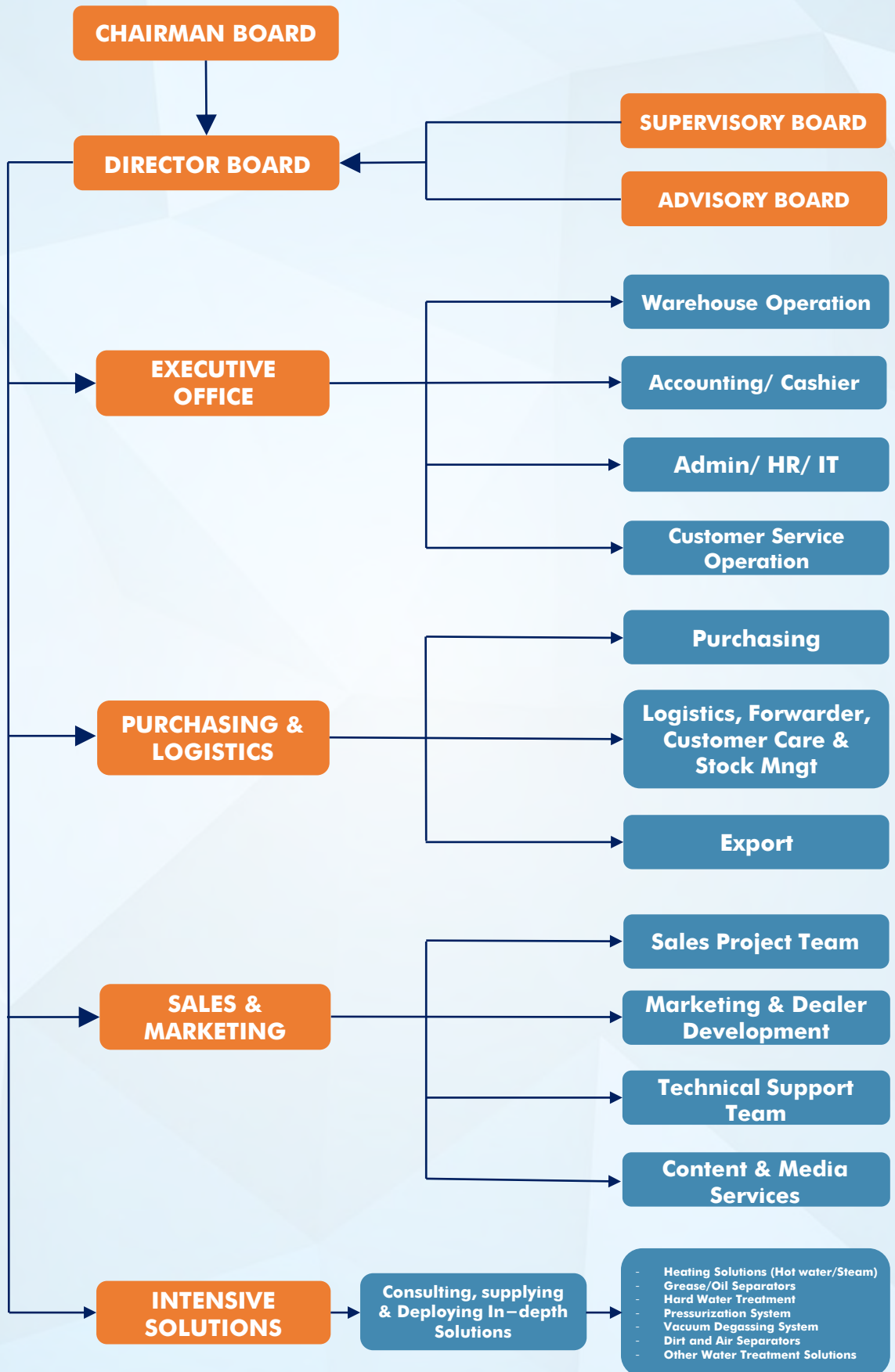
VIBRATION ISOLATION SOLUTIONS

- ✓ Flexible joints
- ✓ Spring isolators
- ✓ Vibration isolation rubber pads
- ✓ Floor mounted rubber vibration isolators
- ✓ Water hammer arresters

TECHNICAL CAPABILITY

- ✓ **PGTECH:** Providing technical training for contractors, consultants, and investors about the solutions
- ✓ **Installation consultation:** Providing consultation and installation guidance within supplying scopes
- ✓ **Manufacturer:** Providing technical training programs by manufacturer's experts when needed

ORGANIZATIONAL CHART



TYPICAL BRANDS

TOZEN
A joint reliance

PARATECH
FESCO



Flamco

Flow of Innovation



enerblue

INSPIRED BY NATURE



ECOTHERM[®]
HEAT TRANSFER SOLUTIONS

Techn*eau*

BELIMO[®] **inta** **PA**

ONICON
— Flow and Energy Measurement —



wavin

YOOKSONG
Fire Solution

SAMYANG
SYSTEM GROUP

PGSAFE

MSA

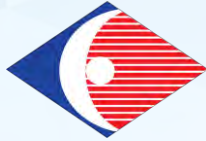
BUSINESS PARTNERS

❖ TYPICAL INVESTORS



BUSINESS PARTNERS

❖ TYPICAL M&E CONTRACTORS





MANUAL VALVES

Tozen - Japan
Samyang – Korea
Inta – United Kingdom

PGTECH has a full range of manual valves for HVAC, Water Supply and Drainage, Fire Protection, Steam, Gas, Oil, Chemical systems etc. from the world's leading reputable manufacturers such as Japan, Korea, European and G7 countries etc. The manual valves can be made of copper, steel, stainless steel, plastic etc. and have operation capacity under high temperature and pressure resistance to meet various engineering applications.

BALL VALVES



Brass ball valves, threaded-end
Pressure: PN21 | Temperature: -10°C - 180°C



Cast iron ball valves, flanged-end
Pressure: 0.98MPa | Temperature: 5°C - 60°C



Steel ball valves hand-wheel/lever type
Pressure: 0.98MPa | Temperature: 5°C - 60°C



1-piece/3-piece stainless steel ball valves
Pressure: 0.98MPa | Temperature: 5°C - 60°C



3-way/4-way stainless steel ball valves, flanged-end
Pressure: 0.98MPa | Temperature: 120°C

GATE VALVES



Brass gate valves, rising/non-rising stem, threaded-end
Pressure: PN25 | Temperature: -10°C - 180°C



Stainless steel gate valves, threaded-end
Pressure: PN16 | Temperature: -29°C - 180°C



Stainless steel gate valves, flanged-end
Pressure: PN16 | Temperature: -10°C - 180°C



Ductile iron gate valves - rising/non-rising stem, flanged end
Pressure: PN16/PN25 | Temperature: -10°C - 120°C



Stainless steel gate valves, flanged-end
Pressure: PN16/PN25 | Temperature: -10°C - 120°C

GLOBE VALVES



Threaded brass globe valves
Pressure: 300 PSI



Threaded stainless steel globe valves
Pressure: 0.98MPa | Temperature: 180°C



Flanged cast iron globe valves
Pressure: PN16 | Temperature: -10°C - 120°C



Flanged cast iron globe valves
Pressure: PN16 | Temperature: -10°C - 200°C



Flanged steel globe valves
Pressure: 0.98MPa | Temperature: 120°C



Flanged steel/stainless steel globe valves
Pressure: 0.98MPa | Temperature: 180°C

BUTTERFLY VALVES



Cast iron butterfly valves - Wafer type
Pressure: PN16/PN25 | Temperature: -20°C - 110°C



Cast iron butterfly valves - Lug type
Pressure: PN16/PN25 | Temperature: -20°C - 110°C



Cast iron butterfly valves - 2 flanges type
Pressure: PN10/ PN16/PN25 | Temperature: -20°C - 110°C



Stainless steel butterfly valves - Wafer type
Pressure: PN16/PN25 | Temperature: -10°C - 135°C



CHECK VALVES



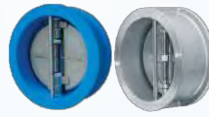
Threaded Bronze/Stainless steel swing check valves
Pressure: 300PSI/0.98MPa | Temperature: -10°C - 180°C



Flanged cast iron swing check valves
Pressure: PN16 | Temperature: -20°C - 110°C



Flanged cast iron/stainless steel wafer type dual door check valves
Pressure: PN16/PN25 | Temperature: -40°C - 180°C



Flanged cast iron spring check valves
Pressure: PN16/PN25 | Temperature: -20°C - 110°C



Steel/cast iron hammerless check valves
Pressure: 0.98MPa | Temperature: 5°C - 60°C



Y-STRAINERS



Threaded bronze/stainless steel Y-strainers
Pressure: PN25/0.98MPa | Temperature: -10°C - 180°C



Flanged cast iron Y-strainers
Pressure: PN16/PN25 | Temperature: -10°C - 120°C



Flanged steel Y-strainers
Pressure: 1.98MPa | Temperature: 220°C



Flanged stainless steel Y-strainers
Pressure: 0.98MPa | Temperature: 180°C



FOOT VALVES



Flanged cast iron foot valves
Pressure: PN16/PN25
Temperature: -10°C - 120°C



Flanged stainless steel foot valves
Pressure: 0.98MPa
Temperature: 120°C



Flanged cast iron foot valves
Pressure: 0.98MPa
Temperature: 5°C - 60°C



Flanged stainless steel foot valves
Pressure: 1MPa
Temperature: < 80°C



Brass thread-end foot valves
Pressure: 1.6MPa
Temperature: < 80°C

AUTOMATIC AIR VENT VALVES



Automatic brass air vent valves, thread-end
Pressure: PN16



Automatic cast iron air vent valves, thread-end
Pressure: PN16 | Temperature: -10°C - 120°C



Automatic cast iron air vent valves, flanged-end
Pressure: PN16 | Temperature: -10°C - 120°C



Automatic copper air vent valves, thread-end
Pressure: 0.98MPa | Temperature: 60°C



Automatic brass air vent valves, thread-end
Pressure: PN10 | Temperature: -10°C - 120°C





PRESSURE REDUCING VALVES

Tozen - Japan

Samyang - Korea

Flamco - Netherlands

Inta – United Kingdom

PGTECH has a full range of high quality direct and indirect pressure reducing valves for water, steam, gas and liquid systems in general made in Europe, Japan, and Korea. The size range of pressure reducing valves is from threaded connections to flange connections and the materials are copper, stainless steel, cast iron with pressures from PN16, PN25, PN30 etc. We also have lines of pressure reducing valves with WRAS approval for drinking water and European standards that can withstand high temperatures of hot water and steam.

WATER PRESSURE REDUCING VALVES



Flanged cast iron hydraulic pressure reducing valves

Pressure: PN16/25 | Temperature: -10°C ~ 80°C



Threaded copper/stainless steel direct pressure reducing valves

Pressure: PN16/25 | Temperature: -10°C ~ 80°C



Threaded copper direct pressure reducing valves

Pressure: PN16 | Maximum temperature: 80°C



Threaded copper direct pressure reducing valves

Pressure: PN25 | Maximum temperature: 80°C



Flanged/ Threaded cast iron/stainless steel pressure reducing valves

Pressure : 1.0MPa | Temperature: 5°C ~ 80°C



Flanged cast iron hydraulic pressure reducing valves

Pressure : 1.0MPa | Temperature: 5°C ~ 80°C

STEAM PRESSURE REDUCING VALVES



Flanged cast iron/stainless steel pressure reducing valves

Pressure : 1.7MPa/3.0MPa | Temperature: <250°C



Flanged cast iron pressure reducing valves

Pressure : 1.0MPa | Temperature: <220°C



Threaded cast iron pressure reducing valves

Pressure : 1.0MPa | Temperature: <220°C



Flanged cast iron pressure reducing valves

Pressure : 2.0MPa | Temperature: 5°C ~ 80°C

AIR PRESSURE REDUCING VALVES



Flanged cast iron pressure reducing valves

Pressure : 2.0MPa | Temperature: 5°C ~ 80°C



Threaded cast iron pressure reducing valves

Pressure : 1.0MPa | Temperature: <220°C



SAFETY VALVES

Tozen – Japan
Samyang - Korea
Flamco - Netherlands

PGTECH provides a full range of safety valves for water, steam, gas, and liquid from brands of the developed industrial countries of Japan, Europe, and Korea.

There are various options for safety valves, including brass, cast iron/ductile iron, high-temperature and high-pressure resistance, meeting the needs of various applications.

WATER SAFETY VALVES



Threaded brass safety valves
Maximum Pressure: 5Bar
Temperature: -10°C ~ 120°C



Threaded brass safety valves
Maximum Pressure : 10Bar
Temperature: -10°C ~ 120°C



Threaded brass thermostatic safety valves
Maximum Pressure : 7Bar
Temperature: -10°C ~ 120°C



**Threaded brass safety valves
(Used for Solar Energy system)**
Maximum Pressure : 10Bar | Temperature: -30°C ~ 120°C



Flanged ductile iron safety valves
Pressure : PN16/25 | Temperature: -10°C ~ 80°C



Threaded cast iron safety valves
Maximum Pressure : 1.0MPa | Temperature: <80°C



Flanged cast iron safety valves
Maximum Pressure : 1.0MPa
Temperature: <80°C



Flanged cast iron safety valves
Pressure : PN10 | Maximum temperature: 120°C

STEAM SAFETY VALVES



Threaded cast iron safety valves
Pressure : 1.0MPa | Temperature: <220°C



Threaded cast iron safety valves
Pressure : 1.0MPa | Temperature: <220°C



Flanged cast iron pressure reducing valves
Pressure : 1.0MPa | Temperature: <220°C



Flanged cast iron pressure reducing valves
Pressure : 3.0MPa | Maximum temperature: 350°C

AIR SAFETY VALVES



Threaded cast iron safety valves
Pressure : 1.0MPa | Temperature: <220°C



Threaded cast iron safety valves
Pressure : 1.0MPa | Temperature: <220°C



Flanged cast iron pressure reducing valves
Pressure : 1.0MPa | Temperature: <220°C



FLOAT VALVES

Tozen - Japan
Samyang – Korea
PGSAFE - Vietnam

PGTECH provides a full and diverse range of float valves including float valves, electric float valves which made of cast iron/ ductile iron, copper, and stainless-steel originating from Europe, Japan, and Korea.

THREADED FLOAT VALVES



Threaded brass/stainless steel float valves

Dimensions: 3/8" ~ 4" | Body: Brass/Bronze/Stainless steel | Float shaft: Copper/Stainless steel
Ball: Plastic | Maximum Pressure: 6 Bar | Maximum temperature: 80oC (176oC)

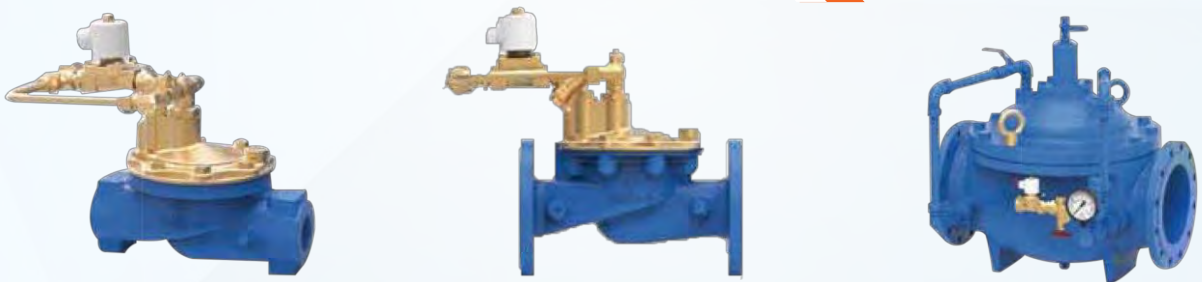
FLANGED FLOAT VALVES



Flanged float valves

Dimensions : DN50 ~ DN600 | Body : Ductile Iron | Shut-off/ Float shaft : Stainless steel
Ball: Stainless steel | Pressure: PN16/PN25 | Maximum temperature: -10oC ~ 80oC

ELECTRIC DUCTILE IRON FLOAT VALVES



Flanged/ Threaded electric ductile iron float valves | Automatic water level control

Dimensions : Thread connection 32A ~ 40A / Flange connection 50A ~ 300A | Body : Ductile iron (GC200)
Has an integrated solenoid valve | Pressure: 1.0 MPa | Maximum temperature: 80oC

ELECTRIC STAINLESS STEEL FLOAT VALVES



Flanged/ Threaded electric stainless steel float valves | Automatic water level control

Dimensions : Thread connection 32A ~ 40A / Flange connection 50A ~ 150A | Body : Stainless steel (STS)
Has an integrated solenoid valve | Pressure: 1.0 MPa | Temperature: 5oC ~ 80oC



WATER HAMMER ARRESTERS

**Tozen - Japan
Samyang – Korea
Flamco – Netherlands
Yooksong – Korea**

Various types of surge anticipator valves, threaded and flanged water hammers help ensure the operation performance of hydraulic systems and effectively prevent issues such as leakages, pipeline ruptures, which can pose risks to the system.

MOOHA WATER HAMMER ARRESTERS



Flanged Mooha water hammer arresters

Size: DN25 ~ DN150 | Body: Steel (SS400) | Pressure: PN16/25
Rubber pressure absorption type

STAINLESS STEEL WATER HAMMER ARRESTERS



Flanged water hammer arresters cushion/gas/spring type

Size : 25A ~ 300A | Body : Steel/ Stainless steel | Type: Gas/Spring
Maximum pressure: 0.98Mpa/1.96MPa | Temperature: 5oC ~ 80oC

FLANGED WATER HAMMER ARRESTERS



Flanged hydraulic water hammer arresters

Size : DN50 ~ DN600 | Body/Cover: Ductile Iron | Spring: Stainless steel
Diaphragm: Rubber (NBR/EPDM/HNBR/VITON) | Pressure: PN16/25 | Temperature : -10°C ~ 80°C

THREADED WATER HAMMER ARRESTERS



Threaded brass water hammer arresters

Size : 1/2" ~ 1-1/4" | Body : Brass | Butyl rubber diaphragm
Volume: 160 cm³ | Maximum pressure: 10.0 Bar | Maximum temperature: 90oC



VALVES FOR AIR/STEAM SYSTEMS

**Tozen - Japan
Samyang – Korea**

Industrial boilers and air compressor systems use valves and safety devices for steam systems. PGTECH provides a full range of valves and specialized control equipment for steam systems, including steam control valves, steam safety valves, steam pressure reducing valves, steam traps, steam water separation, Y-strainers, manual valves, thermal expansion joints, etc.

STEAM TRAPS



Flanged/Threaded cast iron steam traps

Size: 15A ~ 50A | Body: Cast Iron (GCD450)
Maximum pressure: 1.4MPa (option) | Temperature: <220°C



Threaded cast iron steam traps

Size: 15A ~ 25A | Body: Cast Iron (GCD450)
Pressure: <1.7 MPa | Temperature: <220°C



Threaded cast iron steam traps

Size: 15A ~ 25A | Body: Cast Iron (GC200)
Pressure: 0.034~1.2MPa | Temperature: <220°C

STEAM SAFETY VALVES



Threaded cast iron safety valves

Pressure: 1.0MPa | Temperature: <220°C



Threaded cast iron safety valves

Pressure: 1.0MPa | Temperature: <220°C



Flanged cast iron safety valves

Pressure: 1.0MPa
Temperature: <220°C



Flanged cast iron safety valves

Pressure: 3.0MPa
Maximum temperature: 350°C

STEAM PRESSURE REDUCING VALVES



Flanged cast iron pressure reducing valves

Pressure: 2.0MPa | Temperature: 5°C ~ 80°C



Flanged cast iron pressure reducing valves

Pressure: 1.0MPa | Temperature: <220°C



Threaded cast iron pressure reducing valves

Pressure: 1.0MPa | Temperature: <220°C



Flanged cast iron/steel pressure reducing valves

Pressure: 1.7MPa/3.0MPa
Temperature: <220°C / <250.

CONDENSTATE WATER SEPARATORS



Flanged steel water separators for steam system

Size: 15A ~ 200A | Body: Steel (SPPS)
Maximum pressure: 2.0MPa | Temperature: <220°C

BALL VALVES



Threaded brass ball valves

Size: DN15 ~ DN50 | Body: Bronze/Brass
Pressure: PN42/PN28 | Temperature: -10°C ~ 180°C



1 piece/3 pieces threaded stainless steel ball valves

Size: 15A ~ 50A | Body: Stainless steel (SSC13/SSC14)
Pressure : 0.98MPa | Maximum temperature: 80°C



1 piece threaded stainless steel ball valves

Size: 15A ~ 50
Body Stainless steel (SSC13)
Pressure : 1000 psi
Temperature : 5°C ~ 120°C



3-way/4-way Flanged stainless steel ball valves

Size: 15A ~ 300A | Body : Stainless steel (SSC13)
Pressure : 0.98 Mpa
Maximum temperature : 120°C

GLOBE VALVES



Threaded copper globe valves

Size: DN15 ~ DN50
Body : Bronze
Pressure : 300PSI
Temperature : -10°C ~ 180°C



Flanged cast iron globe valves

Size: DN15 ~ DN300
Body : Cast Iron
Pressure : PN16
Temperature : -10°C ~ 200°C



Flanged/Threaded stainless steel globe valves

Size: DN15 ~ DN300
Body : Stainless Steel (SSC13)
Pressure : 0.98MPa/1.96 Mpa
Maximum temperature : 180°C



Flanged/Threaded/Welded steel globe valves

Size: 15A ~ 50A
Body : Carbon Steel
Pressure : 10K ~ 40K (optional)
Maximum temperature : 450°C

GATE VALVES



Threaded stainless steel gate valve

Size: 15A ~ 50A
Body : Stainless steel (SSC13)
Pressure : 0.98MPa
Maximum temperature : 180°C



Threaded steel gate valve

Size: 50A ~ 300A
Body : Steel (SCPH2)
Pressure : 0.98MPa/1.96MPa
Maximum temperature : 120°C/220°C



Flanged stainless steel gate valve, rising/ non-rising stem

Size: DN15 ~ DN300
Body : Stainless steel (SSC13)
Pressure : 0.98MPa
Maximum temperature : 180°C



Flanged/Threaded/Welded steel gate valve

Size: 15A ~ 50A
Body : Carbon Steel
Pressure : 10K ~ 40K (optional)
Maximum temperature : 450°C

CHECK VALVES



Threaded stainless steel check valves

Size: 15A ~ 50A
Body : Stainless steel (SSC13)
Pressure : 0.98MPa
Maximum temperature : 180°C



Flanged steel check valves

Size: 50A ~ 300A
Body : Steel (SCPH2)
Pressure : 0.98MPa/1.96MPa
Maximum temperature : 120°C/220°C



Flanged stainless steel check valves

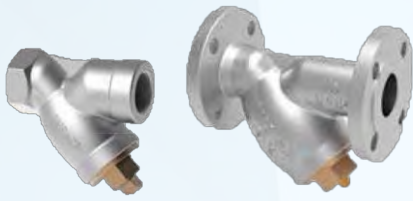
Size: 15A ~ 300A
Body : Stainless steel (SSC13)
Pressure : 0.98MPa
Maximum temperature : 180°C



Flanged/Threaded/Welded steel check valves

Size: 15A ~ 50A
Body : Carbon Steel
Pressure : 10K ~ 40K (optional)
Maximum temperature : 450°C

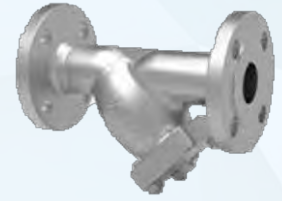
Y-STRAINERS



Threaded/Flanged cast iron Y-Strainers
 Size: DN20 ~ DN450 | Body: Cast iron (GC200)
 Maximum pressure: 1.0 MPa | Temperature: <80°C



Threaded/Flanged cast iron Y-Strainers
 Size: DN15 ~ DN200 | Body: Cast iron (GC200)
 Maximum pressure: 1.0 MPa
 Temperature: <220°C



Threaded/Flanged cast iron Y-Strainers
 Size: DN15 ~ DN500 | Body: Cast iron (GCD450)
 Maximum pressure: 2.0 MPa
 Temperature: <220°C

STRAINERS

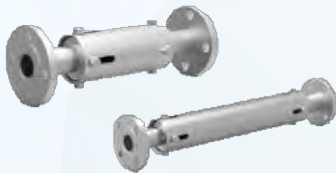


Flanged cast iron strainers
 Size: DN20 ~ DN200 | Body: Cast iron (GC200)
 Maximum pressure: 1.0 MPa | Temperature: <120°C

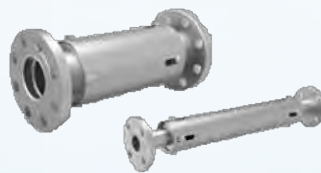


Threaded/flanged cast iron strainers
 Size: DN50 ~ DN300 | Body: Cast iron (GC200)
 Maximum pressure: 1.0 MPa
 Maximum temperature: 220°C

EXPANSION JOINTS



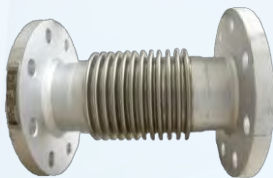
Flanged stainless steel expansion joints
 Size: DN25 ~ DN300 | Body: Stainless steel (STS)
 Maximum pressure: 1.0 MPa | Temperature: <220°C



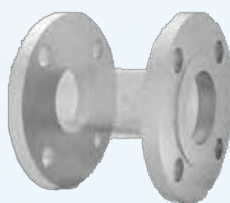
Flanged stainless steel expansion joints
 Size: DN25 ~ DN300 | Body: Stainless steel (STS)
 Maximum pressure: 2.0 MPa | Temperature: <250°C



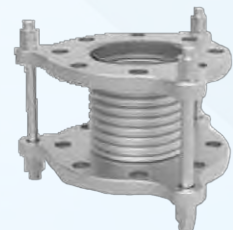
Welded stainless steel expansion connector
 Size: DN25 ~ DN200 | Body: Stainless steel (STS)
 Maximum pressure: 1.0 MPa | Temperature: <220°C



Flanged stainless steel expansion joints
 Size: DN40 ~ DN600 | Body: Stainless steel 304/316L
 Pressure: 10 ~ 25 Bar (optional)
 Maximum temperature: 250°C



Flanged stainless steel expansion joints
 Size: DN25 ~ DN300 | Body: Stainless steel (STS)
 Pressure: 1.0 Mpa/2.0 MPa | Temperature: <220°C



Flanged stainless steel expansion joints
 Size: DN25 ~ DN400 | Body: Stainless steel (STS)
 Pressure: 1.0 Mpa/2.0 MPa
 Temperature: <220°C/< 250°C



INDUSTRIAL VALVES FOR OIL, GAS & LIQUID (API)

MSA – Czech Republic

MSA - manufacturer of various types of industrial valves in Czech Republic, specializing in oil, gas, thermal and nuclear systems etc., have had a long history and manufacturing experience since 1885, with a variety of sizes, and materials.

All types of industrial valves of MSA have been certified with international standards including API, meeting the strict manufacturing requirements and efficient in low/high temperature according to specific applications. The gas system valves can be operating in the low temperature range from -195 degree Celsius to -50 degree Celsius and high temperature range from -50 degree Celsius to 550 degree Celsius, the high pressure from Class 150 to 2500

VALVES FOR GAS



Fully welded body ball valve, flanged/welded
 Size: DN15 – DN1400 | Body: Carbon Steel/
 Alloy Steel/ Stainless Steel
 Working pressure: PN16 – PN326
 Working temperature: -50°C ~ +200°C



Top-entry soft sealed ball valve
 Size: DN15 – DN1400 | Body: Carbon Steel/
 Alloy Steel/ Stainless Steel
 Working pressure: PN16 – PN326
 Working temperature: -50°C ~ +200°C



Double block and bleed valve
 Size: DN15 – DN1400 | Body: Carbon Steel/
 Alloy Steel/ Stainless Steel
 Working pressure: PN16 – PN326
 Working temperature: -50°C ~ +200°C



Bolted body ball valve, flanged/welded
 Size: DN15 – DN1400 | Body: Carbon Steel/
 Alloy Steel/ Stainless Steel
 Working pressure: PN16 – PN326
 Working temperature: -50°C ~ +200°C

VALVES FOR GAS



Top-entry cryogenic ball valve
 Size: DN15 – DN500 | Body: Carbon Steel/
 Alloy Steel/ Stainless Steel
 Working pressure: PN16 – PN326 |
 Working temperature: -50°C ~ +200°C



Swing check valve
 Size: DN15 – DN1050 | Body: Carbon Steel/
 Alloy Steel/ Stainless Steel
 Working pressure: PN16 – PN326 |
 Working temperature: -50°C ~ +200°C



Metal seated ball valves, welded/flanged
 Size: DN15 – DN1400 | Body: Carbon Steel/
 Alloy Steel/ Stainless Steel
 Working pressure: Class 150 – 2500 |
 Working temperature: -50°C ~ +550°C



Top-entry metal seated ball valve
 Size: DN15 – DN1400 | Body: Carbon Steel/
 Alloy Steel/ Stainless Steel
 Working pressure: CLASS 150 – 2500 |
 Working temperature: -50°C ~ +550°C

VALVES FOR LNG, GAS POWER AND THERMAL POWER



Swing check valve with pressure seal bonnet
 Size: DN100 – DN300 | Body: Carbon Steel/ Austenite Steel
 Maximum working pressure: 20Mpa
 Working temperature: -50°C ~ +350°C



Welded gate valve
 Size: DN50 – DN800
 Body: Carbon Steel/ Austenite Steel
 Maximum working pressure: 20Mpa
 Maximum working temperature: +350°C



Welded regulating butterfly valve
 Size: up to DN800
 Body: Carbon Steel/ Austenite Steel
 Working pressure: 11.0 MPa
 Maximum working temperature: +350°C



Welded swing check valve with remote indication of stop device position
 Size: DN80 – DN600
 Body: Carbon Steel
 Working pressure: 20 Mpa
 Maximum working temperature: +350°C

VALVES FOR NUCLEAR POWER



Thread stainless steel check valve
 Size: 15A – 50A
 Body: Stainless steel (SSC13)
 Working pressure: 0.98MPa
 Maximum working temperature: 180°C



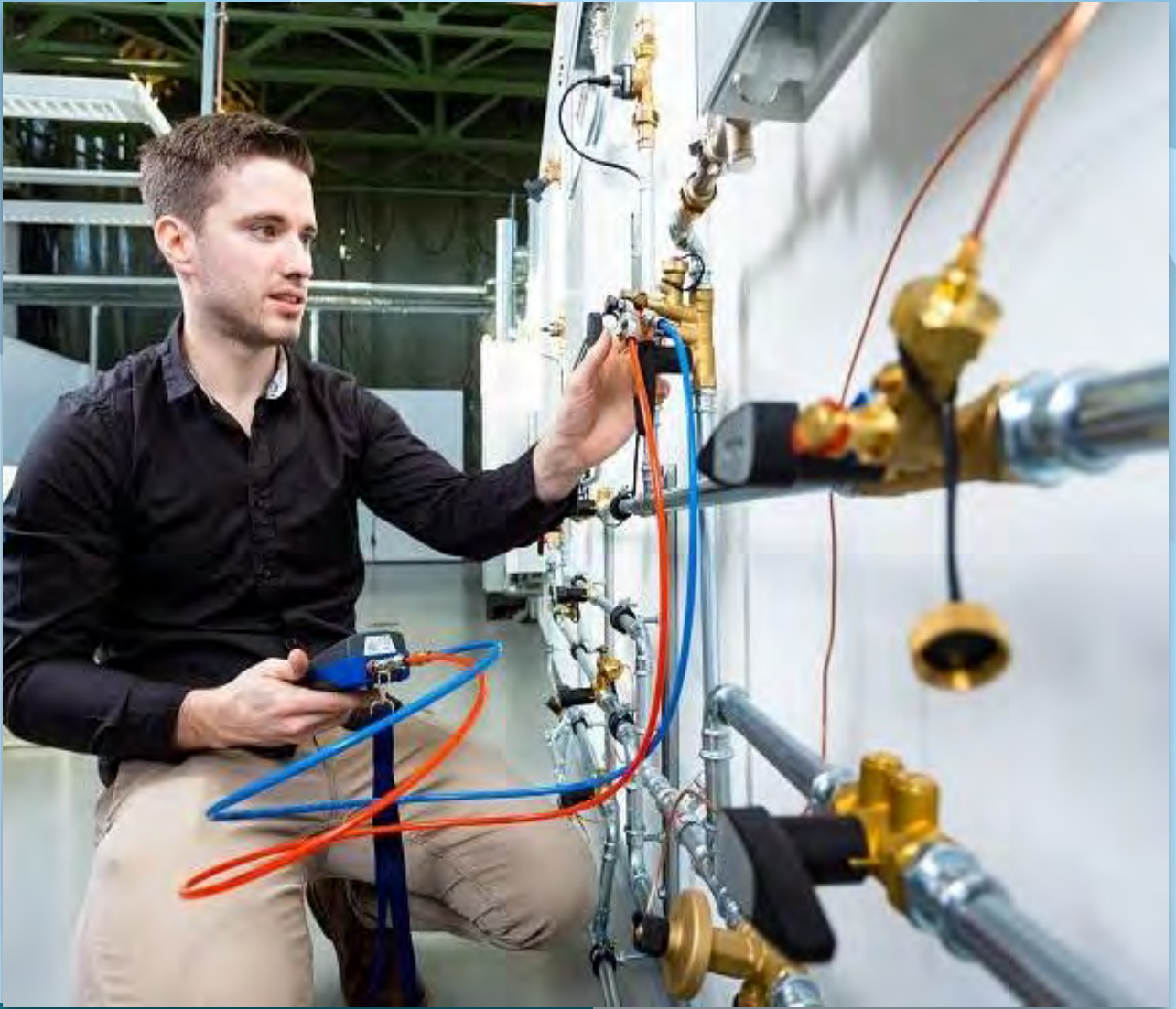
Ball valve
 Size: 50A – 300A
 Body: Steel (SCPH2)
 Working pressure: 0.98MPa/1.96MPa
 Maximum working temperature: 120°C/220°C



Flanged/welded gate valve
 Size: 50A – 1200A
 Body: Carbon steel/ Stainless steel/
 Alloy steel
 Working pressure: PN16 – PN100
 Maximum working temperature: +538°C



Flanged/welded globe valve
 Size: 50A – 600A
 Body: Carbon Steel/ Stainless Steel/
 Alloy Steel
 Working pressure: Class 150 – 1500
 Maximum working temperature: +538°C



BALANCING VALVES

Flamco - Netherlands
Belimo – Switzerland
Sunflu – Denmark
Inta – United Kindom

PGTECH provides a full range of solutions for hydraulic balancing and HVAC systems; including manual balancing valves, automatic balancing valves, differential pressure balancing valves, pressure independent control valves (PICV), thermal balancing valves, from famous European brands.

MANUAL BALANCING VALVES



Threaded manual balancing valves
Size: DN15 ~ DN50 | Body: Bronze
Pressure: PN16/PN25 | Temperature: -10°C ~ 220°C



Flanged cast iron manual balancing valves
Size: DN50 ~ DN600 | Body: Cast iron
Pressure: PN16/PN25 | Temperature: -20°C ~ 120°C



AUTOMATIC BALANCING VALVES

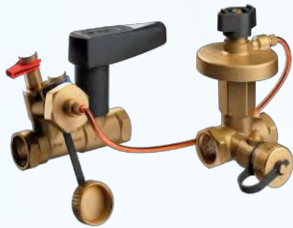


Flanged automatic cast iron balancing valves
Size: DN15 ~ DN40 | Body: Bronze
Pressure: PN16/PN25 | Temperature: 0°C ~ 110°C



Automatic balancing valves with water connection
Size: DN50 ~ DN500 | Body: Ductile cast iron
Pressure: PN16/PN25 | Temperature: 0°C ~ 110°C

PRESSURE DIFFERENTIAL BALANCING VALVES



Threaded bronze pressure differential balancing valves
Size: DN15 ~ DN50 | Body: Brass / Cast iron
Pressure: PN16/PN25 | Temperature: -20°C ~ 120°C



Flanged cast iron pressure differential balancing valves
Size: DN40 ~ DN250 | Body: Cast iron
Pressure: PN16 | Temperature: -10°C ~ 120°C



PRESSURE INDEPENDENT CONTROL VALVES (PICV)



Threaded PICV
Body: Brass | Control: Modulating/ On-Off
Pressure: PN25 | Temperature: -20°C ~ 120°C



Flanged PICV
Body: Cast iron | Control: Modulating/ On-Off
Pressure: PN16 | Temperature: 5°C ~ 120°C



Flanged PICV
Body: Brass / Cast iron | Connection: Threaded/Flanged
Pressure: PN25/PN40 | Control: Modulating/ On-Off/M-BUS/MOD-BUS | Fail-safe function | BacNet connection



THERMAL BALANCING VALVES



Brass threaded thermal balancing valves
Size: DN15, DN20, DN25 | Body: Brass | Pressure: 10Bar/16Bar
Temperature range: 40°C ~ 65°C / 40°C ~ 50°C / 50°C ~ 60°C





CONTROL VALVES FOR WATER SYSTEMS

Belimo - Switzerland

PGTech provides valve control solutions for water systems of HVAC systems, including various control types such as modulating, on/off, 3-points, and various sizes within the DN15-DN1200 range from the leading brands in the World.

CHARACTERIZED BALL VALVES



2-way/3-way electrical control ball valves, threaded-end

Type: Normal/Fail-Safe control | Control: Modulating/ On-Off/3-point
Body : Đồng mạ Nickel | Pressure : PN25/PN40 | Temperature : -10°C ~ 120°C

2-way/3-way electrical control ball valves, flanged-end

Type: Normal/Fail-Safe control | Control: Modulating/ On-Off/3-point
Body : Cast iron | Pressure : PN16 | Temperature : -5°C ~ 100°C

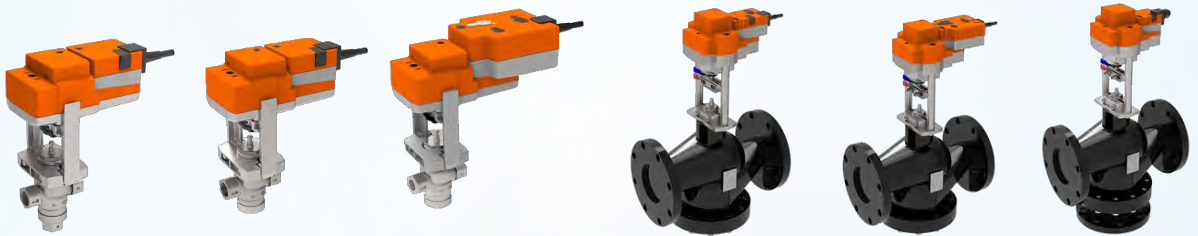
MOTORIZED BUTTERFLY VALVES



2-way electrical control ball valves, flanged-end

Type: Normal/Fail-Safe | Control: Modulating/ On-Off/3-point/M-Bus/Mod-Bus
Size: DN25 ~ DN1200 | Body : Cast iron | Pressure : PN16/PN25 | Temperature: -20°C ~ 120°C | Flanged-end: Wafer/Lug/Double flange type

MOTORIZED GLOBE VALVES



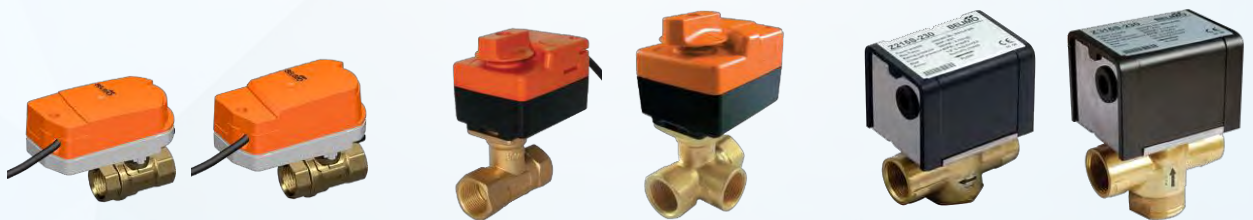
2-way/3-way electrical control globe valves, threaded-end

Type: Normal/Fail-Safe | Control: Modulating/ On-Off/3-point
Body : Stainless steel | Pressure : PN25 | Temperature : 0°C ~ 130°C

2-way/3-way electrical control globe valves, flanged-end

Type: Normal/Fail-Safe | Control: Modulating/ On-Off/3-point
Body: Cast iron | Pressure : PN16/PN25 | Temperature : 0°C ~ 150°C/ 0°C ~ 180°C

ZONE VALVES/FCU



Zone Valve | 2-way zone valves, threaded

Control: Modulating/ On-Off/3-point
Body : Brass | Pressure : PN25 | Temperature : 2°C ~ 100°C

Control valves for FCU

Control: On-Off/3-point | Body : Brass
Pressure : 2000kPa | Temperature : 5°C ~ 100°C

Control valves for Fan-coil/FCU

Fail-Safe type | Control: On-Off | Body : Brass
Pressure : 2100kPa | Temperature : 0°C ~ 93°C



CONTROL VALVES FOR STEAM SYSTEMS

**Belimo - Switzerland
Samyang – Korea**

PGTech provides control valve solutions for steam systems that work in high temperature environments for HVAC and heavy industry systems. In addition to specialized steam valves, valves required for heavy industry can withstand temperatures from -196°C to $565^{\circ}\text{C}+$.

GLOBE VALVES WITH ACTUATORS



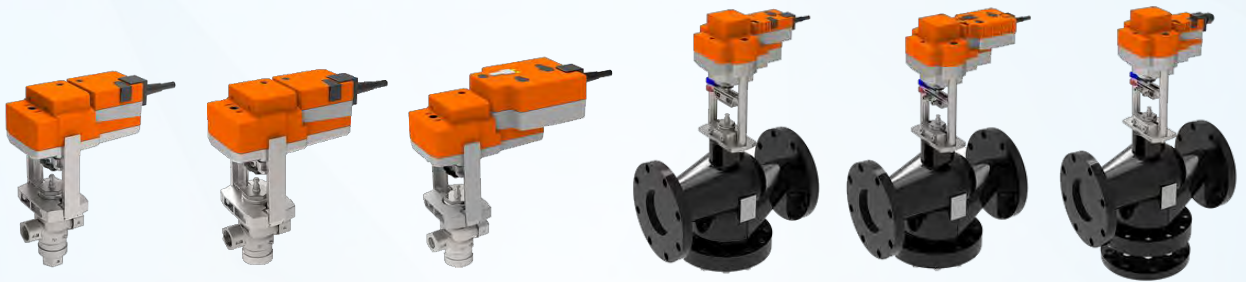
2-way/3-way Internal Thread Globe Valves with Actuator

Non Fail-Safe or Fail-Safe Actuator | Control Open-Close/ 3-point/Modulating
Body: Stainless Steel | Working pressure: PN25 | Working temperature: 0°C ~ 130°C

2-way/3-way Flanged Globe Valves with Actuator

Non Fail-Safe or Fail-Safe Actuator | Control Open-Close/ 3-point/Modulating
Body: Cast Iron | Working pressure: PN16/PN25 | Working temperature: 0°C ~ 150°C/ 0°C ~ 180°C

GLOBE VALVES WITH ACTUATORS



2-way/3-way Internal Thread Globe Valves with Actuator

Non Fail-Safe or Fail-Safe Actuator | Control Open-Close/ 3-point/Modulating
Body: Stainless Steel | Working pressure: PN25 | Working temperature: 0°C ~ 130°C

2-way/3-way Flanged Globe Valves with Actuator

Non Fail-Safe or Fail-Safe Actuator | Control Open-Close/ 3-point/Modulating
Body: Cast Iron | Working pressure: PN16/PN25 | Working temperature: 0°C ~ 150°C/ 0°C ~ 180°C

CONTROL VALVES FOR STEAM SYSTEMS



Electrically Control Valves for Steam Systems | Belimo - Switzerland

Fail-Safe Type | Control Open-Close/Modulating | Size: DN15, DN25, DN40, DN50, DN65, DN80
Body: Cast Iron | Working pressure: PN16 | Working temperature: 0°C ~ 175°C | Flanged connection



Control Valves for Steam Systems | Samyang - Korea

Control Open-Close/Modulating | Size: 1" ~ 14" | Body: Steel | Working pressure: PN250 ~ PN420
Working temperature: -196°C ~ 565°C* | Flanged connection



FLEXIBLE JOINTS

Tozen - Japan

PGTECH provides a complete solution of flexible joints, expansion joints and vibration isolation joints for clean water and sewage systems, steam, air, chemistry and vibration Isolation joints for clean water and sewage systems, steam, air, chemistry, etc.

TOZEN is one of the top manufacturers of expansion joints, and thermal expansion joints in Japan, providing diverse types of products and applications. The expansion joint of the brand TOZEN/Japan has been exported to many other countries in the world and used commonly in Vietnam.

RUBBER FLEXIBLE JOINTS



Single-Sphere Rubber Flexible Joints

Body: Synthetic rubber / EPDM / PVC | Size: DN15 ~ DN400
Working pressure: PN10/PN16/PN25 | BS/JIS/ANSI Flanged Connection | BS21/NPT Thread Connection

Twin-Sphere Rubber Flexible Joints

Body: Synthetic rubber / EPDM / PVC | Size: DN15 ~ DN600
Working pressure: PN10/PN16/PN25 | BS/JIS/ANSI Flanged Connection | BS21/NPT Thread

Rubber Drainage Joints

Body: Synthetic rubber | Working pressure: PN10
Size: DN40 ~ DN200 | Clamp Connection

STAINLESS STEEL FLEXIBLE JOINTS



Flange Type Stainless Steel Flexible Joints

Body: SUS304 / SUS316L | Size: DN15 ~ DN300 | Max working temperature : 250°C
Working pressure: PN10/PN16/PN25 | BS/JIS/ANSI Flanged Connection

Thread Type Stainless Steel Flexible Joints

Body: SUS304 / SUS316L | Size: DN15 ~ DN50
Max working temperature: 200°C | Working pressure: PN16/PN25

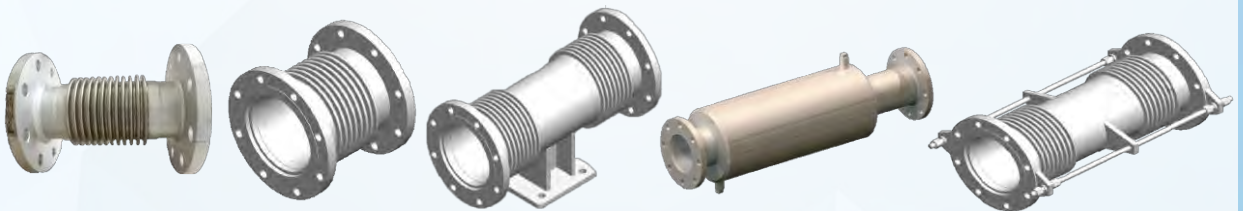
RUBBER EXPANSION JOINTS



Rubber Expansion Joints

Size: DN15 ~ DN1500 | Body: Synthetic rubber/ EPDM / PVC | Working pressure: PN10 / PN16 / PN25 (optional)
Optional the quantity of bellows | Optional the different lengths of the joint according to each size | BS/JIS/ANSI Flanged Connection | Clamp connection

STAINLESS STEEL EXPANSION JOINTS



Stainless steel expansion joints

Size: DN40 ~ DN600 | Body: SUS304/316L | Working pressure: PN10 / PN16 / PN20 / PN25 (optional)
Max working temperature: 250°C | BS / JIS / ANSI Flanged connection

FLEXIBLE JOINTS FOR CHEMICAL LINES



Flexible joint for chemical lines

Size: DN20 ~ DN300 | Body: Synthetic rubber / EPDM / PTFE / PVC | Working pressure: PN10 / PN16 / PN20 / PN25 (optional)
Max working temperature: -20°C ~ 130°C | BS / JIS / ANSI Flanged connection



VIBRATION ISOLATION SOLUTIONS

Tozen - Japan

All the vibration isolation solutions of Tozen/Japan have been used commonly for the the HVAC systems and industries that include different installation options such as floor mounting and hanging as well as different types of vibration isolators such as: Spring vibration isolators, rubber bush, rubber pad and joints...

FLOOR MOUNTING SPRING VIBRATION ISOLATORS



FLOOR MOUNTING SPRING VIBRATION ISOLATORS

Deflection: 25mm / 50mm / 75mm | Mounting cup: cast iron/steel | The spring elements was designed for semi-permanent use
Available the resilient washer to prevent the transmission of noise and slipping
The load capacity range meets the requirement of high vibration isolation and up to 5,600 Kgs

SPRING VIBRATION ISOLATING HANGERS



SPRING VIBRATIONS ISOLATING HANGER

Deflection: 25mm / 50mm | Hanger cup: Stainless steel | The spring elements was designed for semi-permanent use
Available the resilient washer to prevent the transmission of noise | Loading capacity range meets the requirement of high vibration isolation and up to 5,600 Kgs

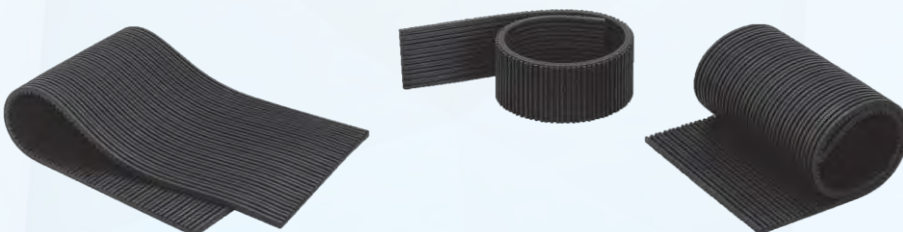
RUBBER VIBRATION ISOLATORS



RUBBER VIBRATION ISOLATORS

Optional hanger or floor mounting type | A variety of rubber parts to effectively prevent vibration and noise
The load capacity range meets the requirement of high vibration isolation and up to 450 Kgs

RUBBER PAD PT-MAT



VIBRATION ISOLATING RUBBER PAD PT-MAT

Designed with the main material of rubber | Both sides of rubber pad were grooved to optimize vibration and noise
Optional thickness: 10mm / 15mm / 20mm. Cut the pad with the suitable dimension to vibration isolation
Easily installed anywhere needed to prevent vibration

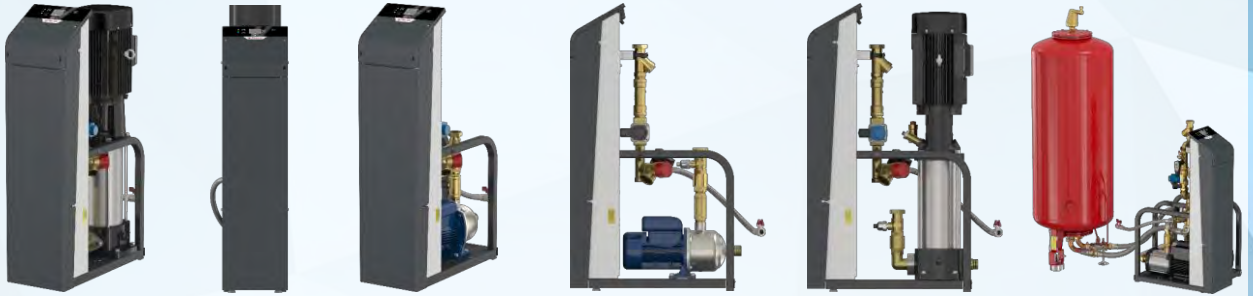


SOLUTIONS FOR HVAC

Flamco - Netherlands

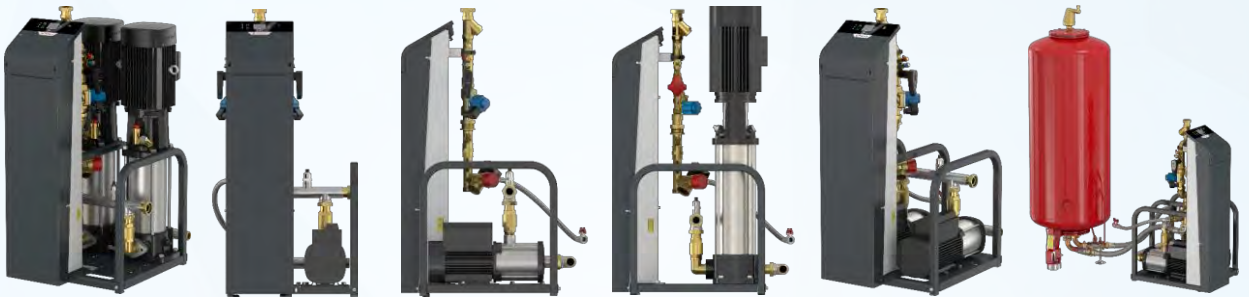
Flamco/Netherlands is one of the top manufacturers of the optimal solutions for HVAC system performance in the world including Pressurization & Degassing System, Vacuum Degassing System, Dirt & Air Separator, Hydraulic Control, Expansion Vessel, Buffer Vessel,... These solutions help to save energy, make the system safer, avoid breakdown, and reduce the maintenance and operating costs.

PRESSURISATION SYSTEMS & DEGASSING SYSTEMS



PRESSURISATION & DEGASSING SYSTEMS FOR HEATING AND COOLING (CHILLER) SYSTEMS

The solution is used to pressurize and degas for the HVAC system(Heating/Cooling) | The system is controlled by a pump
1- pump type | Max working pressure: PN6 / PN10 / PN16 | Working temperature: 3°C ~ 70°C



PRESSURISATION & DEGASSING SYSTEMS FOR HEATING AND COOLING (CHILLER) SYSTEMS

The solution is used to pressurize and degas for the HVAC system(Heating/Cooling) | The system is controlled by a pump
2- pumps type | Max working pressure: PN6 / PN10 / PN16 | Working temperature: 3°C ~ 70°C

VACUUM DEGASSING SYSTEMS



VACUUM DEGASSING SYSTEMS VACUMAT ECO

Negative pressure vacuum degasser helps remove gas quickly, limit damage to the system, avoid unnecessary errors, equipment wear and tear, costly repairs, and extend the lifespan of the system | Controlled by pump and sensor | Max working pressure: PN10 / PN16 | Working temperature: 3°C ~ 120°C



ENA VACUUM DEGASSING SYSTEMS

Helping actively degassing, automatically enhancing closed heating and cooling system | Controlled by pump and sensor
Using vacuum for highly effective degassing in closed systems | Max working pressure: PN8 / PN10 / PN16 | Working temperature: 3°C ~ 70°C

PRESSURISATION & VACUUM DEGASSING SOLUTIONS



PRESSURISATION & VACUUM DEGASSING SOLUTIONS

PSD Series – A compact, fully self-contained vacuum degassing unit used for closed system to effectively provide dissolved gas removal



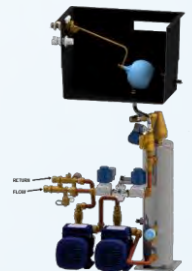
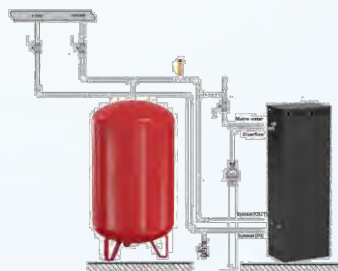
PRESSURISATION & VACUUM DEGASSING SOLUTIONS

Pro PDG Series – Used for closed systems to provide requirements of minimum system pressure and effectively remove dissolved gas



PRESSURISATION & VACUUM DEGASSING SOLUTIONS

Pro PDD Series – Used for closed systems to provide requirements of minimum system pressure and effectively remove dissolved gas



PRESSURISATION & VACUUM DEGASSING SOLUTIONS

Flexfiller Plus & Midifill Plus Series – Providing requirements of minimum system pressure and effectively removing dissolved gas



PRESSURISATION & VACUUM DEGASSING SOLUTIONS

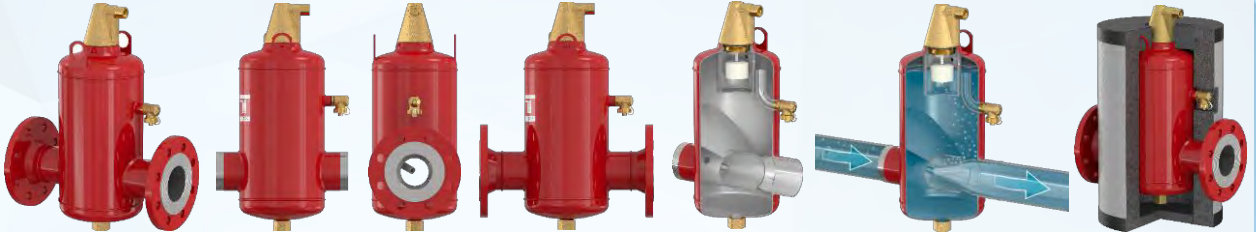
PressDS Plus Series – Used for closed systems to provide requirements of minimum system pressure, effectively remove dissolved gas, and add additives to the system

AIR SEPARATORS



AIR SEPARATOR FOR WATER SYSTEM - SCREWED

Helping completely remove air from the Heating/Boiler & Cooling/Chiller system | Body: Brass | Working pressure: PN10 | Size: 22mm / DN20 ~ DN50



AIR SEPARATOR FOR WATER SYSTEM - FLANGED/WELDING CONNECTION

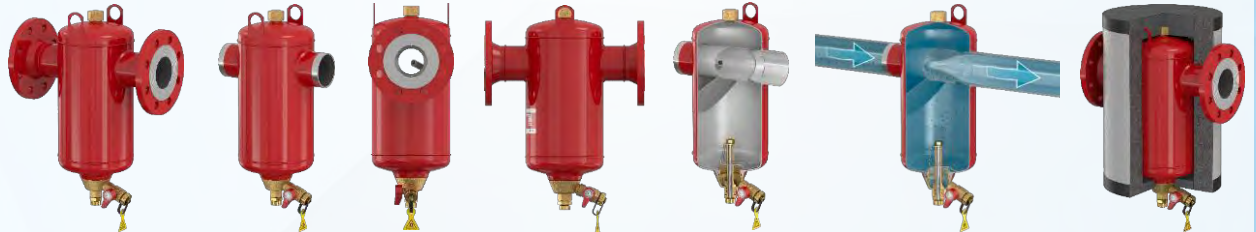
Helping completely remove air from the Heating/Boiler & Cooling/Chiller system | Body: Cast Iron | Working pressure: PN10/PN16/PN25 | Size: DN50 ~ DN600 | Capacity: 8 liters ~ 2390 liters

DIRT SEPARATORS



DIRT SEPARATOR FOR WATER SYSTEM - SCREWED

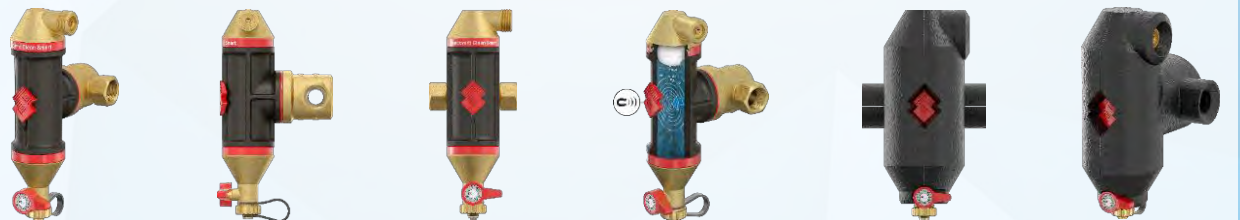
Used for closed heating and cooling systems | Body: Brass | Working pressure: PN10 | Size: DN20 ~ DN50



DIRT SEPARATOR FOR WATER SYSTEM - FLANGED/WELDING CONNECTION

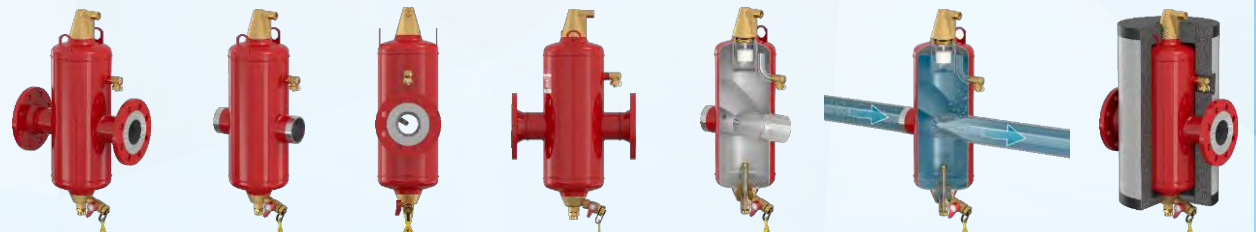
Used for closed heating and cooling systems | Body: Cast Iron | Working pressure: PN10/PN16/PN25 | Size: DN50 ~ DN600 | Capacity: 8 liters ~ 2390 liters

DIRT & AIR SEPARATORS



DIRT & AIR SEPARATOR FOR WATER SYSTEM - SCREWED

Helping completely remove air from heating and cooling systems | Body: Brass | Working pressure: PN10 | Size: DN20 ~ DN50



DIRT & AIR SEPARATOR FOR WATER SYSTEM - FLANGED/WELDING CONNECTION

Used for closed heating and cooling systems | Body: Cast Iron | Working pressure: PN10/PN16/PN25 | Size: DN50 ~ DN600 | Capacity: 8 liters ~ 3056 liters



Flamco



EXPANSION VESSELS

Flamco - Netherlands

Flamco/Netherlands is one of the largest manufacturers of expansion vessels in the world, providing full of expansion vessel and pressure vessel solutions for HVAC, Water Supply and Drainage, Fire Fighting System with the variety of capacity from 2 liters to 10,000 liters.

The solutions of traditional and smart automatic expansion vessel (BMS communication and compressor included) with high technology, long lifespan, and genuine long-term warranty from the manufacturer.

EXPANSION VESSELS FOR DRINKING WATER



EXPANSION VESSEL FOR DRINKING WATER (DOMESTIC WATER & HVAC)

The expansion vessel with the high quality is used for water fluid, including drinking water | Body: Steel | Working pressure: PN10/PN16/PN25 | Capacity: 2 liters ~ 5000 liters

AUTOMATIC EXPANSION VESSELS



AUTOMATIC EXPANSION VESSELS FOR HVAC SYSTEM

Used to optimize operating performance, reduce installation volume and space, automatically pressurize and connect BMS communications
Body: Steel | Working pressure: PN10/PN16/PN25 | Capacity: 8 liters ~ 3056 liters

OTHER EXPANSION VESSELS



EXPANSION VESSELS FOR HEATING/BOILER, COOLING/CHILLER AND SOLAR ENERGY SYSTEMS

Used to optimize the Chiller, Boiler, and Solar Energy Systems | Body: Steel | Working pressure: PN10/PN16/PN25 | Capacity: 2 liters ~ 10.000 liters

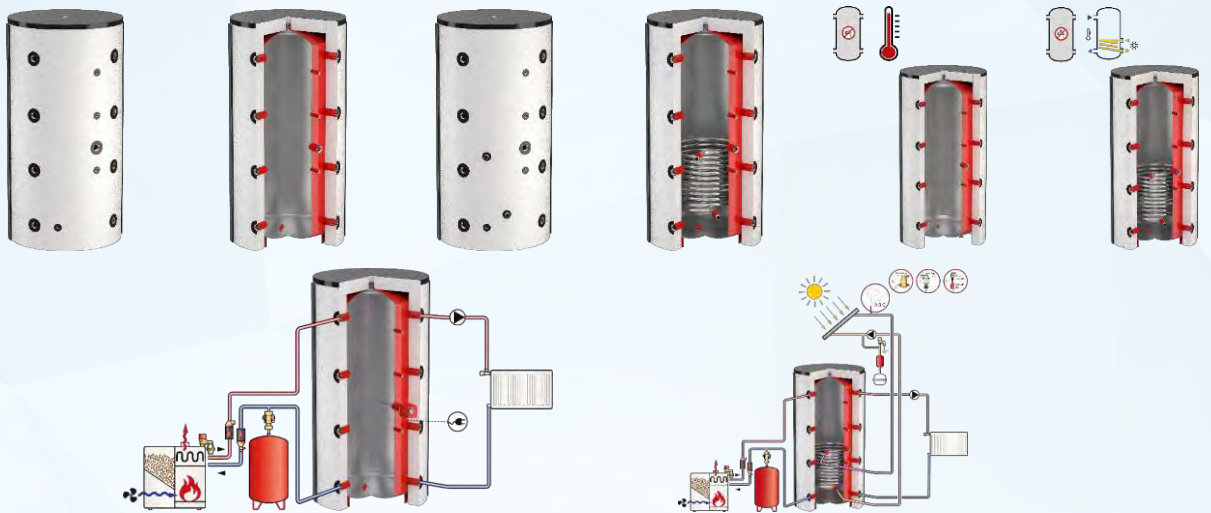


BUFFER VESSELS/TANKS

Flamco - Netherlands

Flamco/Netherlands provides full of buffer vessel solutions with high quality, used effectively for the Heating (Boiler) and Cooling (Chiller) system in HVAC System. The buffer vessels of Flamco are a modern solution for the HVAC system, help save energy effectively, and enhance the operation performance of the system. Working pressure designed for your requirements, high quality material of steel, advanced thermal insulation,... are preeminent characteristics of Flamco Buffer Vessels.

HEATING BUFFER VESSELS



BUFFER VESSELS FOR HEATING/BOILER SYSTEMS

Used for closed heating systems | Including a heating coil for connecting additional heating sources | Body: Steel | Working pressure: PN10/PN16/PN25 | Capacity: 200 liters – 5000 liters

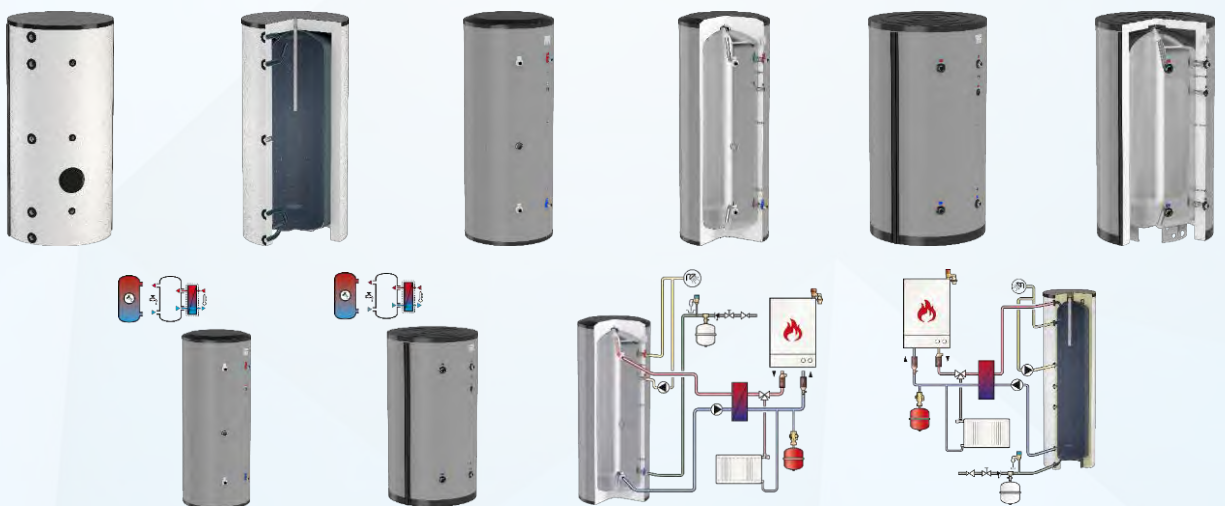
COOLING BUFFER VESSELS



BUFFER VESSELS FOR COOLING/CHILLER SYSTEMS

Used for closed cooling systems | Body: Steel | Working pressure: PN10/PN16/PN25 | Capacity: 500 liter – 3000 liter

STORAGE VESSELS FOR DRINKING WATER



STORAGE VESSELS FOR DRINKING WATER

Used for systems in which heat can be exchanged by external heat exchangers | Body: Steel | Working pressure: PN10/PN16/PN25 | Capacity: 300 liters – 1000 liters

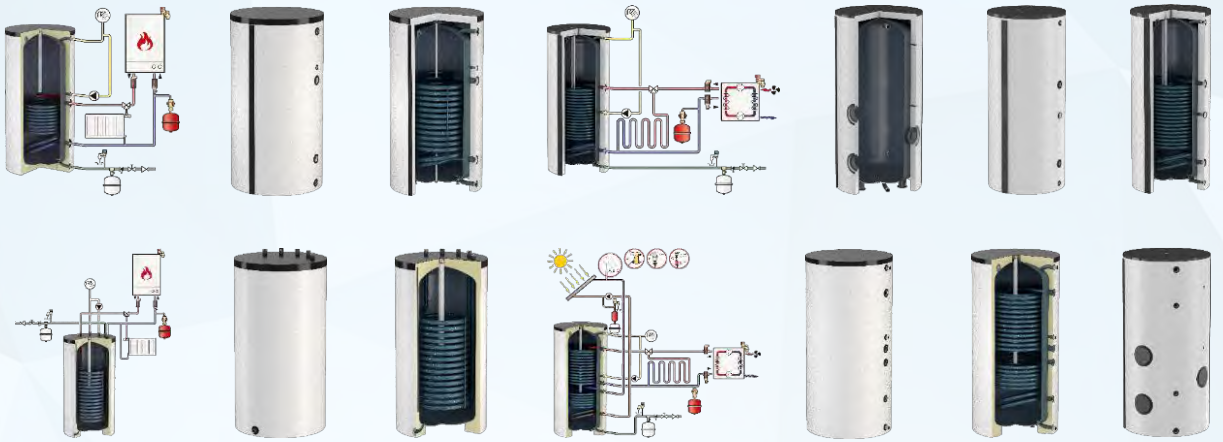


WATER HEATERS

Flamco - Netherlands

PGTECH provides a wide range of water heater solutions with variety of capacity from 110 liters to 3000 liters, and different types of materials such as high-quality specialized steel, stainless steel, glass to avoid corrosion and extend the lifespan, absolutely safe for users as well as retain heat well.

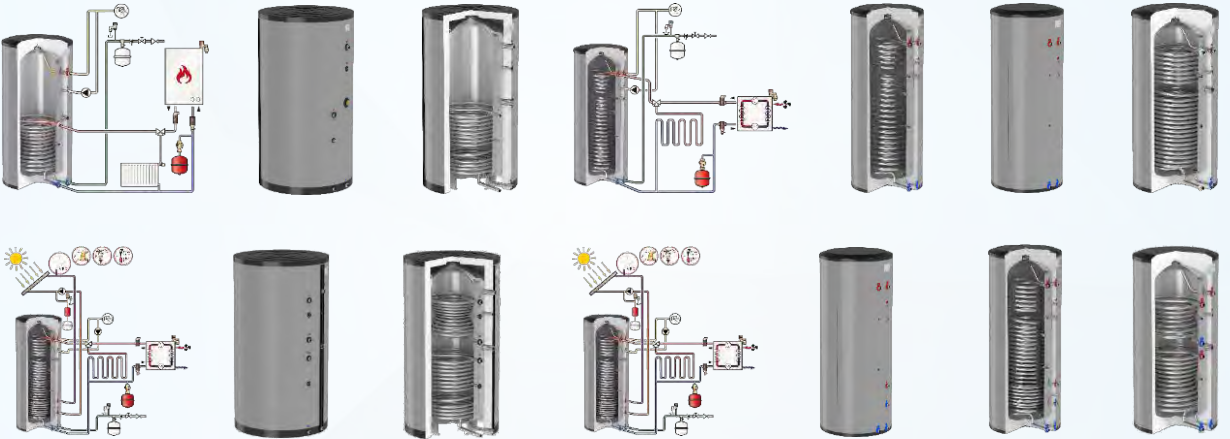
GLASS COATED WATER HEATERS



HIGH-QUALITY GLASS COATED WATER HEATERS

Combining with heat pumps | For use in the heating and hot water system, solar energy system
Including insulation | Working pressure: PN10/PN16/PN25 | Capacity: 120 liters ~ 3000 liters

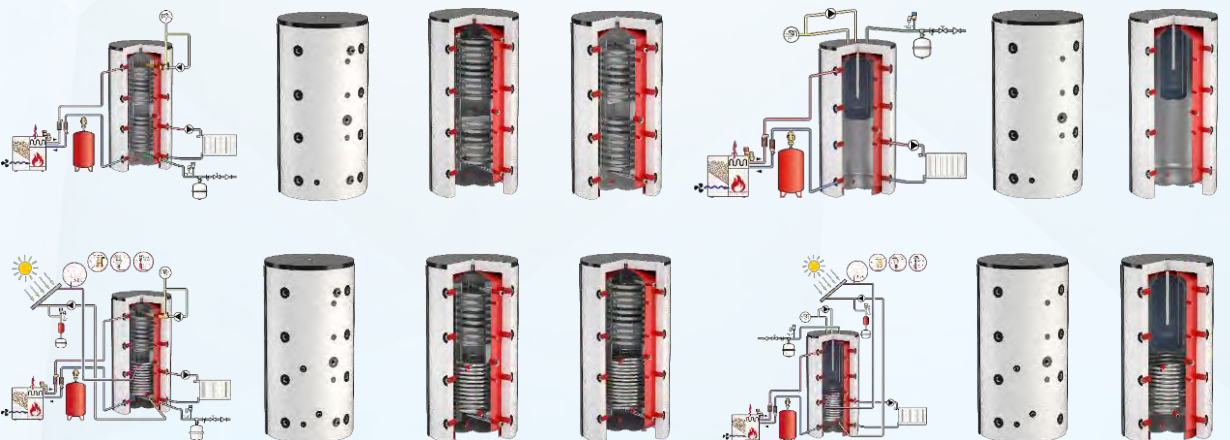
STAINLESS STEEL WATER HEATERS



HIGH-QUALITY STAINLESS STEEL WATER HEATERS

Combining with heat pumps | For use in the heating and hot water system, solar energy system
Including insulation | Working pressure: PN10/PN16/PN25 | Capacity: 120 liters ~ 3000 liters

STEEL WATER HEATERS



HIGH-QUALITY STEEL WATER HEATERS

Combining with heat pumps | For use in the heating and hot water system, solar energy system
Including insulation | Working pressure: PN10/PN16/PN25 | Capacity: 120 liters ~ 3000 liters



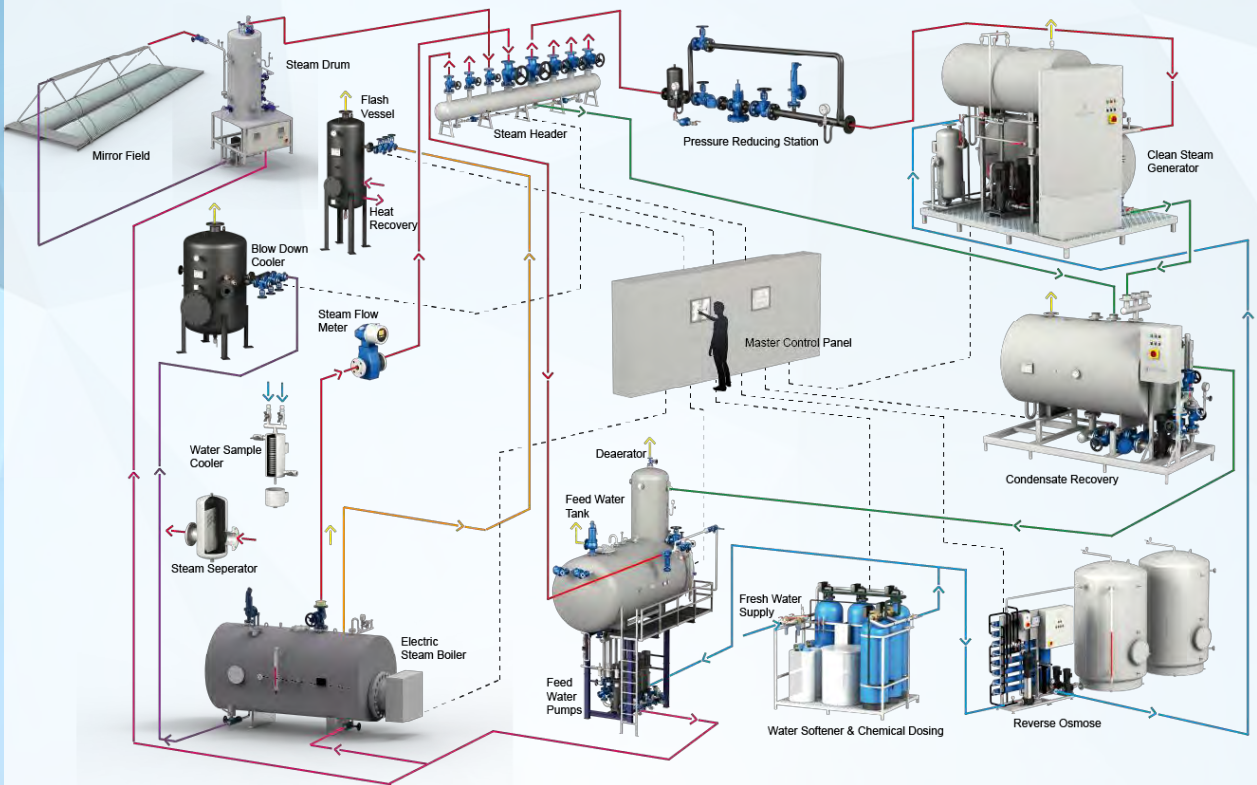
SOLUTIONS FOR HEATING SYSTEMS (WATER HEATERS, PRESSURIZED STORAGE TANKS, BOILERS...)

Ecotherm – Austria

Ecotherm - a long history corporation since 1880 in Austria, with various solutions for HVAC, steam, and solar systems, is popular for water heaters, heating storage tanks, electric boilers, gas and oil boilers, heating exchanger, etc.

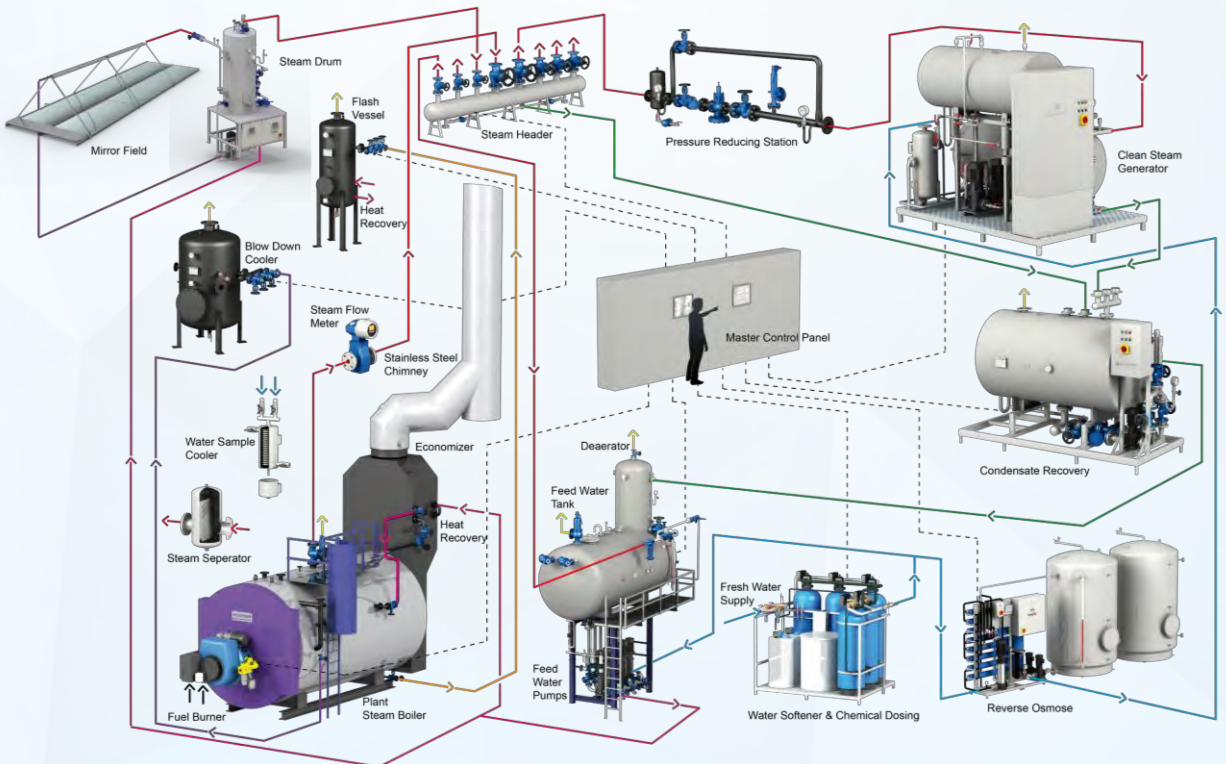
Ecotherm's water heaters, heat storage tanks are made of high-quality stainless steel 316, with capacity of up to 30.000 liters, have patented solutions that help increase heat capacity, reduce tank volume and save space by up to 95%, reduce energy and maintenance costs effectively.

ECOTHERM SOLAR STEAM SOLUTIONS



ECOTHERM® Turnkey Electric Steam Boiler Solutions (Optional with a ECOTHERM® Solar Steam System)

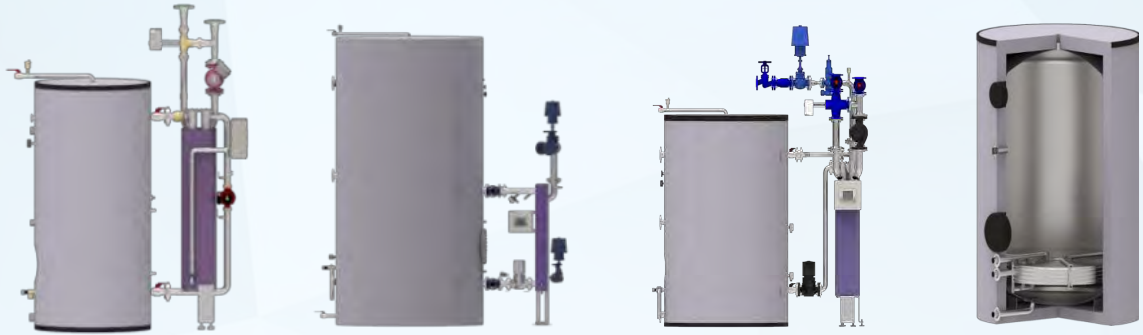
For hotels, resorts, hospitals, factories (pharmaceutical, food and beverage, etc.) and the industry



ECOTHERM® Turnkey Clean Steam Solutions (Optional with a ECOTHERM® Solar Steam System)

For hotels, resorts, hospitals, factories (pharmaceutical, food and beverage, etc.) and the industry

ECOTHERM HIGH-CAPACITY WATER HEATERS



HIGH-CAPACITY WATER HEATERS WITH EXTERNAL SHELL, TUBE HEAT EXCHANGER & INTERNAL SPIRAL FLAT HEATING COIL (USE FOR WATER/STEAM BOILERS, HEAT PUMPS)
 Power Capacity 50kW – 2000kW | Heat auto – exchanger using patented controller
 Capacity 300L ~ 20.000L | Body material: High-quality Stainless steel 316

ELECTRIC WATER HEATERS



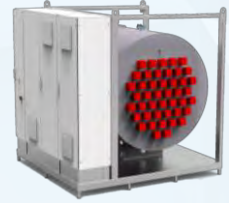
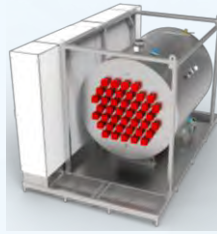
DIRECT/INDIRECT FIRED WATER HEATER (WITH COMPACT GAS CONDENSING BOILER)
 Direct heating tank use a compact gas condensing boiler | Indirect heating tank uses the heat exchanger suitable for hard water
 Direct heating tank uses the ceramic heating component | Direct heating tank uses the incology heating component
 Capacity 300L ~ 10.000L | Body material: High-quality Stainless steel 316

ECOTHERM STORAGE TANKS



STORAGE WATER HEATER WITH INTEGRATED FLAT COIL HEAT EXCHANGER | STORAGE WATER HEATER | UNIVERSAL WATER HEATER
 Pressurized thermal storage tank | Pressurized thermal storage tank with the Stainless steel heating coil
 Capacity 200L ~ 20.000L | Body material: High-quality Stainless steel 316 | Maximum dynamic pressure: 10 bar

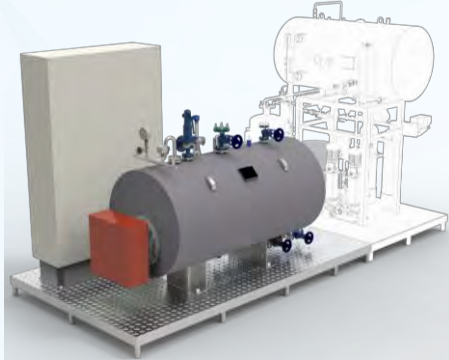
ECOTHERM ELECTRIC BOILERS



ELECTRIC HOT WATER BOILERS (WITH ELECTRIC HEATING ELEMENTS OR HEATING FLANGE)

There is a heating component | Power Capacity: Max 30 MW

Mounted on skid plate and pre-assembled | Electric boiler shell made of stainless steel or mild steel
Used for heating system and produce the domestic hot water | There is an intuitive control panel, BMS connection
Working pressure: 6 bar, 10 bar, 16 bar or above | EU Standard: PED 2014/68/EC or ASME Sect. VIII Div. 1



ELECTRIC STEAM BOILERS

Capacity: 250kg/h – 20.000kg/h | Pressure: up to 16bar | Mounted on skid plate and pre-assembled | Provide pipes and connecting wires . An intuitive control panel, BMS connection, EU Standard: PED 2014/68/EC or ASME Sect. VIII 1.
Body material: Steel P235GH or Stainless steel 304 or 316. Working pressure: 6 bar, 10 bar, 16 bar or above

HEAT PUMPS



Air / Water SPLIT Heat Pump

High-capacity, durable heat pumps for industrial applications



Water / Water Heat Pump

High-efficiency industrial heat pump.



Air / Water COMPACT Heat Pump

High-efficiency heat pump for commercial applications

ECOTHERM MAGNETIC DYNAMIC SEPARATORS



ECOTHERM MAGNETIC-DYNAMIC SEPARATOR

The product range covers throughput ranges from 1 m³/h to 235 m³/h and more. Flushing of new equipment is not required. After switching on the water circuit, mobilized impurities are quickly and effectively separated.

Correction of the pH value. The water quality according to guideline VDI 2035 is achieved within a short time



HEAT PUMP SOLUTIONS FOR HEATING AND COOLING SYSTEMS

Enerblue – Italia

Enerblue is a leading global heat pump manufacturer based in Italy. In response to green and sustainable energy demands, Enerblue develops advanced heat pump technologies, including CO₂ (R744) systems and models using refrigerants such as R290, R513A, R134a, R410A, and R454B for efficient HVAC applications. Enerblue solutions are ideal for commercial and industrial projects, with capacities from 20 to 760 kW and heating temperatures up to 90°C.

Enerblue heat pumps reduce CO₂ emissions, feature inverter technology for energy savings, deliver high COP performance, low noise, long-term reliability, and operation under harsh environmental conditions. Enerblue products are widely adopted across the US, Europe, the Middle East, and Asia-Pacific, with strong annual growth.



PALLADIUM

Heating capacity 40 to 164 kW

- 70°C Max water temperature
- 20° Min external air temperature



PALLADIUM DWS

Heating capacity 40 to 164 kW

- 70°C Max water temperature
- 20° Min external air temperature



PALLADIUM 4P

Heating capacity 40 to 164 kW

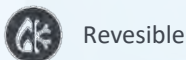
- 70°C Max water temperature
- 20° Min external air temperature



PURPLE HP

Heating capacity 22 to 221 kW

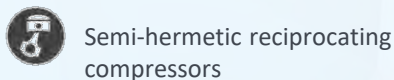
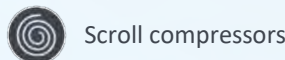
- 62°C Max water temperature
- 20° Min external air temperature



PURPLEI HP

Heating capacity 26 to 221 kW

- 70°C Max water temperature
- 20° Min external air temperature



IRIDIUM - IRIDIUM WW

Heating capacity 14,5 to 137,9 kW

- 90°C Max water temperature
- 20° Min external air temperature



HIGH TEMPERATURE HEAT PUMPS WITH LOW GWP GAS



BLACK HT EVO

Heating capacity 29 to 201 kW

💧 80°C Max water temperature

🌀 -20° Min external air temperature



BRONZE EVO

Heating capacity 34 to 225 kW

💧 80°C Max water temperature



Black HT WW

Heating capacity 38 to 247 kW

💧 80°C Max water temperature



MEDIUM TEMPERATURE HEAT PUMPS WITH R410A GAS




ORANGE - ORANGE MAX

Heating capacity 28 to 77 kW

💧 60°C Max water temperature

🌀 -16° Min external air temperature



 Reversible

 Axial fans

 Multifunctional




ORANGE HT MAX


Heating capacity 40 to 76 kW


💧 65°C Max water temperature

🌀 -20° Min external air temperature



 Scroll compressors

 Semi-hermetic reciprocating compressors

 Compressors with inverter




ORANGE INVERTER


💧 90°C Max water temperature

🌀 -20° Min external air temperature



 Heating

 Total cool recovery

 Twin rotary compressors

BƠM NHIỆT NHIỆT ĐỘ TRUNG BÌNH SỬ DỤNG MÔI CHẤT LẠNH R410A



BROWN

Heating capacity 83 to 244 kW

💧 62°C Max water temperature

🌀 -18° Min external air temperature



RED – RED MAX

Heating capacity 34 to 225 kW

💧 60°C Max water temperature



BƠM NHIỆT NHIỆT ĐỘ TRUNG BÌNH SỬ DỤNG MÔI CHẤT LẠNH R454B

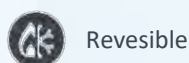


ORANGE - ORANGE MAX

Heating capacity 28 to 77 kW

💧 60°C Max water temperature

🌀 -16° Min external air temperature



Reversible



Axial fans



Multifunctional

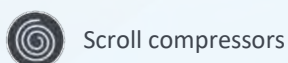


ORANGE HT MAX

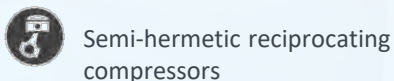
Heating capacity 40 to 76 kW

💧 65°C Max water temperature

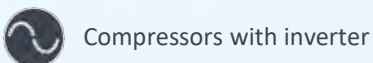
🌀 -20° Min external air temperature



Scroll compressors



Semi-hermetic reciprocating compressors



Compressors with inverter



BROWN

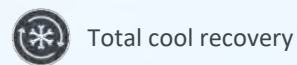
Heating capacity 97 to 261 kW

💧 62°C Max water temperature

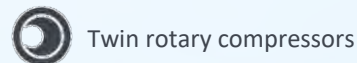
🌀 -18° Min external air temperature



Heating



Total cool recovery



Twin rotary compressors



FIREFIGHTING VALVES & EQUIPMENTS

**Fesco/Paratech – Korea
Yooksong – Korea
PGSAFE – Vietnam**

PGTECH provides variety of fire fighting equipment, meeting the standard of UL/FM of USA, KFI of Korea.

Fesco/Paratech (Korea) is one of the top manufacturers of firefighting equipment in Korea and the top 5 of the firefighting equipment manufacturers of the world. Established in 1973, Fesco/Paratech achieved the prestige certificate UL/FM for Valves for Firefighting, Sprinkler Flexible Hoses, Spinklers, etc.

UL/FM – KFI ALARM VALVES



Flanged Alarm Check Valves

UL/FM Product | Size: DN100 ~ DN200

Body: Ductile Iron | Working pressure: 175 PSI/250 PSI/300 PSI



Grooved Alarm Check Valves

UL/FM Product | Size: DN100 ~ DN200

Body: Ductile Iron | Working pressure: 175 PSI/250 PSI/300 PSI



Flanged Alarm Valves - Retard Chamber Type

KFI Product | Size: DN100, DN150

Body: Ductile Iron | Max working pressure: 1.4 MPa



Flanged Alarm Valves – Alarm Switch Type

KFI Product | Size: DN65 ~ DN150

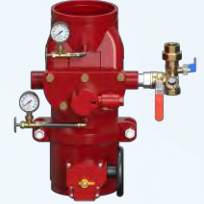
Body: Ductile Iron | Working pressure: 1.4 Mpa | Standard Type



Flanged Alarm Valves – Alarm Switch Type

KFI Product | Size: DN65 ~ DN150

Body: Ductile Iron | Working pressure: 1.4 Mpa | Combine Type



Grooved Alarm Valves – Alarm Switch Type

KFI Product | Size: DN65 ~ DN150

Body: Ductile Iron | Working pressure: 1.4 MPa

UL/FM – KFI DELUGE VALVES



Flanged Deluge Valves

UL/FM Product | Size: DN100, DN150

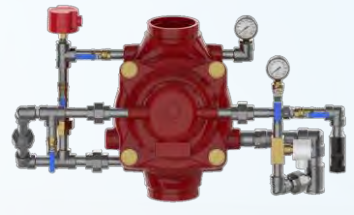
Body: Cast Iron | Max working pressure: 175 PSI



Flanged Pre-Action & Deluge Valves

KFI Product | Size: DN80 ~ DN150

Body: Cast Iron | Max working pressure: 1.4 Mpa/2.2 MPa



Grooved Pre-Action & Deluge Valves

KFI Product | Size: DN80 ~ DN150

Body: Cast Iron | Max working pressure: 1.4 Mpa/2.2 MPa



Flanged Double Interlock Valves

KFI Product | Size: DN150

Body: Cast Iron | Max working pressure: 1.4 MPa



Flanged Dry Pipe Valves

KFI Product | Size: DN100, DN150

Body: Cast Iron | Max working pressure: 1.4 MPa



Pre-Action & Deluge Valves

KFI, UL, FM Product | Size: DN100, DN150

Body: Cast Iron | Max working pressure: 175 PSI

UL/FM PRESSURE REDUCING VALVE AND SAFETY VALVE



FM Standard Pressure Reducing Valve

Size: DN50 ~ DN250 | Temperature: 0°C to 87°C (32°F to 188°F)

Body: Cast Iron | Max Pressure: 20.7 bar (300 psi) | Flange Connection: PN16



UL Standard Pressure Reducing Valve

Size: DN40 ~ DN300 | Maximum Temperature: 82°C (180°F)

Body: Cast Iron | Max Pressure: 20.7 bar (300 psi) | Connection: PN16
Flanged / Grooved / Threaded

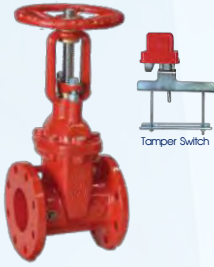


UL & FM Standard Safety Valve

Size: DN50 ~ DN300 | Maximum Temperature: 82°C (180°F)

Body: Cast Iron | Max Pressure: 20.7 bar (300 psi)
Connection: Flanged

GATE VALVES UL/FM



Tamper Switch

Resilient OS&Y Gate Valves

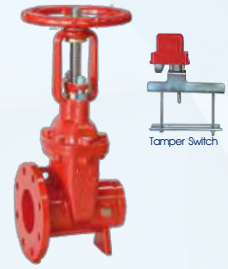
UL/FM Product | Including tamper switch (optional) | Body: Ductile Iron
Size: DN50 - DN600 | Working pressure: 300 PSI | Flange type



Tamper Switch

Resilient OS&Y Gate Valves

UL/FM Product | Including tamper switch (optional) | Body: Ductile Iron
Size: DN50 - DN600 | Working pressure: 300 PSI | Grooved type



Tamper Switch

Resilient OS&Y Gate Valves

UL/FM Product | Including tamper switch (optional) | Body: Ductile Iron
Size: DN50 - DN600 | Working pressure: 300 PSI | Flange & Grooved type



Flanged Resilient NRS Gate Valves

UL/FM Product | Size: DN50 - DN600
Body: Ductile Iron | Disc: Ductile Iron | Working pressure: 300 PSI



Grooved Resilient NRS Gate Valves

UL/FM Product | Size: DN50 - DN600
Body: Cast Iron | Disc: Ductile Iron | Working pressure: 300 PSI



BUTTERFLY VALVES UL/FM



Flanged Resilient Butterfly Valves

- UL/FM Product
- Including tamper switch (optional)
- Size: DN50 - DN300
- Body: Ductile Iron
- Disc: Ductile Iron
- Working pressure: 300 PSI
- Wafer type



Grooved Resilient Butterfly Valves

- UL/FM Product
- Including tamper switch (optional)
- Size: DN50 - DN300
- Body: Ductile Iron
- Disc: Ductile Iron
- Working pressure: 300 PSI
- Grooved type



Flanged Resilient Butterfly Valves

- UL/FM Product
- Including tamper switch (optional)
- Size: DN50 - DN300
- Body: Ductile Iron
- Disc: Ductile Iron
- Working pressure: 300 PSI
- Lugged type

CHECK VALVES UL/FM



Flanged Check Valves

UL/FM Product | Size: DN50 - DN300
Body: Ductile Iron | Disc: Ductile Iron | Working pressure: 300 PSI



Grooved Check Valves

UL/FM Product | Size: DN50 - DN300
Body: Ductile Iron | Disc: Ductile Iron | Working pressure: 300 PSI



Y STRAINERS UL/FM



Flanged Strainers

UL/FM Product | Size: DN50 - DN300
Body: Ductile Iron | Filter: Stainless Steel | Working pressure: 300 PSI



Grooved Strainers

UL/FM Product | Size: DN50 - DN300
Body: Ductile Iron | Filter: Stainless Steel | Working pressure: 300 PSI

CONCEALED SPRINKLER HEADS



Concealed Sprinklers

Sprinkler head with glass bulb | Material: Brass | Connection: NPT or BSPT (optional) | Standard: UL | K = 5.6 | Temperature rating: 68°C / 93°C



Flush Type Sprinklers

Flush type Sprinkler Head | Material: Chrome-plated Brass | Connection: NPT or BSPT (optional) | Standard: UL | K = 5.6 | Temperature rating: 72°C / 105°C

EXPOSED GLASS BULB SPRINKLER HEADS



Sprinkler head with glass bulb K5.6

Type: Standard / Quick Response | Material: Chrome-plated Brass / Teflon-coated
Connection: NPT / BSPT (optional) | Approval: UL & FM | K = 5.6
Temperature rating: 57°C / 68°C / 79°C / 93°C / 141°C



Sprinkler head with glass bulb K5.6

Type: Standard / Quick Response | Material: Chrome-plated Brass / Teflon-coated
Connection: NPT / BSPT (optional) | Approval: UL/FM | K = 8.0
Temperature rating: 57°C / 68°C / 79°C / 93°C / 141°C



Sprinkler head with glass bulb K11.2

Type: Standard / Quick Response | Material: Chrome-plated Brass / Teflon-coated
Connection: NPT/BSPT (optional) | Approval: KFI/FM | K = 8.0 | Temperature rating: 57°C / 68°C / 79°C / 93°C / 141°C



Early Suppression Fast Response Sprinkler head K14

Type: Quick Response | Material: Brass | Nối ren NPT/BSPT
Approval: KFI | K = 14 | Temperature rating: t = 68°C/93°C

SPECIALIZED NOZZLES: DRENCHER & DRY SPRINKLER HEAD



Drencher head

Drencher Head | Material: Chrome-Plated Brass
Type: Upright/Right-Angle | Thread: PT | K = 5.6



Dry Type Sprinkler Head

Dry Sprinkler Head | Material: Brass/Chrome-Plated Brass | Type: Upright/Pendent/Sidewall
| Thread: PT | K = 5.6 | Temperature: 68 °C / 72 °C / 93 °C / 105 °C

FOAM/ FM200 GAS SPRINKLER HEADS



Air Foam Head

Foam Sprinkler Head | Material: Brass | Pendent Type
PT Thread Connection | K = 5.6 (80 LPM)



FM200 Gas Nozzle

360° Discharge | Material: Brass / Chrome-Plated Brass |
Pendent Type | PT/NPT Thread Connection

UL/FM BRAIDED SPRINKLER FLEXIBLE HOSE



Braided Sprinkler Flexible Hose for Fire Protection Systems

Certified to UL/FM or KFI or LPCB standards (optional) | Corrugated hose: Stainless steel 304 / 316 | Braiding: Stainless steel | Thread connection: Ø25, Ø28, 1/2", or 3/4" (optional) | Length: 700 mm – 3100 mm | Supplied with complete installation accessories.

UL/FM UNBRAIDED SPRINKLER FLEXIBLE HOSE



Unbraided Sprinkler Flexible Hose for Fire Protection Systems

Certified to UL/FM or KFI or LPCB standards (optional) | Corrugated hose: Stainless steel 304 / 316 | Thread connection: Ø25, Ø28, 1/2", or 3/4" (optional) | Length: 700 mm – 3100 mm | Supplied with complete installation accessories.

INSTALLATION AND ACCESSORIES



Installation Accessories for Sprinkler Flexible Hose

FIRE PUMP FLOW METERS



Threaded / Flanged Fire Protection System Flow Meter

Electronic Fire Protection System Flow Meter – Flanged Connection

FM / LPCB Approved Fire Protection System Flow Meter

FM Approved Venturi Type Fire Protection System Flow Meter

UL/FM THREADED ISOLATION VALVES



Threaded Ball Valve – UL/FM Approved

Body: Chrome Plated Brass | Max. Working Pressure: 42 bar | Connection: BSPP Thread (ISO 228) | Size: DN15 – DN50



Threaded Butterfly Valve with Supervisory Switch – UL/FM Approved

Body: Chrome Plated Brass | Max. Working Pressure: 20.7 bar (300 psi) | Connection: Threaded ANSI/ASME B1.20.1 | Size: DN25 – DN50

FOAM FIRE FIGHTING SOLUTIONS



Foam fire extinguishing station cabinet



Air Foam Chamber



Mobile Foam fire extinguishing equipment



Foam Fire Fighting Storage Tank | Fire Fighting Foam (AFF / AR-AFF 3% or 6% / Alcohol Foam 3%)



FM200 Fire Suppression System
NKFS-100 / NKFS-125

FIRE NOZZLE SOLUTIONS



Handheld automatic fire extinguishing nozzles



Fire extinguishing water nozzles, water spray nozzles

CÁC LOẠI THIẾT BỊ KHÁC



Indicator Post



Relief Valve



Sight Glass



Angle valve



Cover Cap, Protective Guard for Sprinkler Head - SS304



Fire pump accessories



ABC Powder Fire Extinguisher



MECHANICAL WATER METERS

Cidong – Korea

PGTECH supplies a wide range of mechanical water meters for both cold and hot water systems, with sizes ranging from DN15 to DN600. The products comply with ISO 9001, ISO 4064, and MID (EU) standards, and offer optional BMS smart connection via RS485, M-Bus, and Modbus protocols. The CIDONG water meter series is designed in a traditional, durable, and reliable style. Thanks to this, the CIDONG brand has earned trust in many countries around the world, including the EU, USA, Middle East, and Asia. In Vietnam, thousands of CIDONG water meters, from threaded to flanged types in all sizes, have been installed in major projects. This has built strong confidence among investors, MEP contractors, and design consultants.

MECHANICAL WATER METERS



WATER METER FOR HOT WATER

Using turbine and register for measurement display | Size: DN15 ~ DN600 | Pressure: PN10 / PN16 | Connection: Flanged / Threaded



WATER METER FOR COLD WATER/WASTE WATER

Using turbine and register for measurement display | Size: DN15 ~ DN600 | Pressure: PN10 / PN16 | Connection: Flanged / Threaded

SMART (BMS) WATER METERS



SMART WATER METER WITH BMS CONNECTION

Size: DN15 ~ DN300 | Pressure: PN10 / PN16 | Connection: Threaded / Flanged
Output Signal: Pulse, RS-485 MODBUS / M-BUS Communication Interfaces



TEMPERATURE & PRESSURE GAUGES

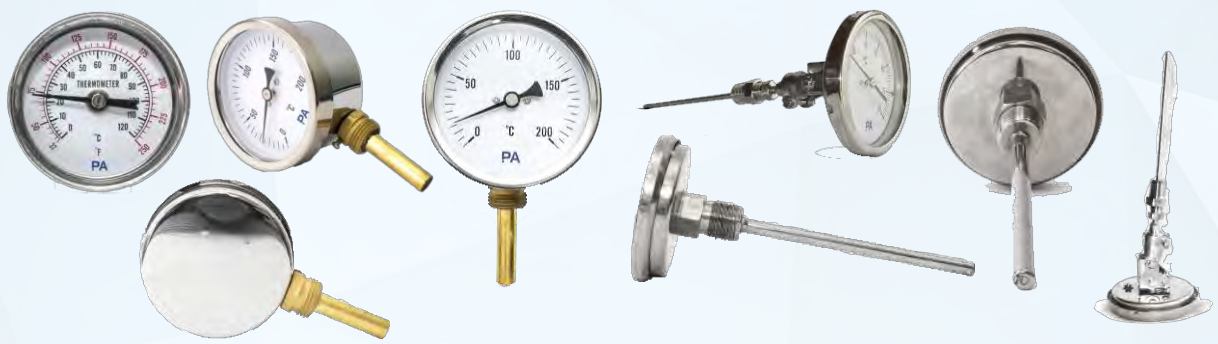
PA – Germany

PGTECH provides complete solutions for temperature and pressure measurement for a wide range of applications including Water Supply & Drainage, HVAC, Fire Protection, Steam, and Gas. We offer a variety of temperature gauges, including back connection stainless steel types or straight stem brass types with stainless steel cases, featuring measuring ranges up to 600°C or higher, as well as industrial mercury thermometers.

In addition, we supply a wide range of pressure gauges, including oil-filled stainless steel case types and non-oil steel case types with brass connections, covering ranges from vacuum to high pressure up to +1600 bar.

PA is a leading brand in temperature and pressure measurement solutions, headquartered in Slovakia/Germany. With hundreds of millions of PA gauges manufactured and installed in buildings worldwide, the brand has established itself as one of the global leaders in temperature and pressure measurement.

THERMOMETERS / TEMPERATURE GAUGES



TEMPERATURE GAUGE (BACK CONNECTION / BOTTOM CONNECTION)

Measuring Range (optional): -30°C ~ 600°C | Dial Size (optional): 40 mm ~ 160 mm | Stem Length (optional): 110 mm ~ 200 mm | Material: Brass / Steel / Stainless Steel



MERCURY THERMOMETER (STRAIGHT TYPE / ANGLED TYPE)

Optional Measuring Range: -30°C ~ 600°C | Optional Dial Size: 40 mm ~ 160 mm | Optional Stem Length: 110 mm ~ 200 mm | Material: Brass / Steel / Stainless Steel

PRESSURE GAUGES



Non Oil-Filled Pressure Gauge

Type: Oil-Free | Dial Size (optional): 40 mm ~ 160 mm | Max. Measuring Range (optional): 600 Bar | Case: Steel | Connection: Brass Threaded



OIL-FILLED PRESSURE GAUGE

Type: Oil-Filled | Dial Size (optional): 40 mm ~ 160 mm | Max. Measuring Range (optional): 600 Bar | Case: Stainless Steel | Connection: Stainless Steel Threaded



**ELECTROMAGNETIC
FLOW METERS -
LIQUIDS, STEAM, GAS
&
BUILDING AIR FLOW
MEASUREMENT**

Onicon - USA

PGTECH provides complete measurement solutions, including flow meters (mechanical, electromagnetic, ultrasonic), BTU meters, temperature gauges, and high-quality pressure gauges compliant with European (EU) and US standards. The products are manufactured by reputable brands, widely used worldwide, and offer high accuracy to perfectly meet the requirements of projects utilizing these measurement devices.

TURBINE FLOW METERS



F-1000 Series Turbine Flow Meters

Turbine rotor measurement | Size: 3/4" ~ 72"
Working pressure: Up to 400 psi | Connection: Insertion / In-line



F-1500 Insertion Turbine Flow Meter for Steam

Turbine rotor measurement | Size: 3" ~ 16" | Operating temperature: up to 450°F
Working pressure: up to 300 psi | Connection: Insertion type



ELECTROMAGNETIC FLOW METERS



Insertion Type Electromagnetic Flow Meter

Size: 1 1/4" ~ 72" | Operating temperature: 15°F ~ 250°F | Working pressure: up to 400 psi
Accuracy: ±1.0% | Protection rating: NEMA 6 | Material: Stainless Steel 316



In-line Electromagnetic Flow Meter

Size: 1" ~ 48" | Operating temperature: 15°F ~ 250°F | Working pressure: up to 400 psi
Accuracy: ±0.5% | Protection rating: NEMA 6 | Material: Carbon Steel / SUS / Polypropylene

ULTRASONIC FLOW METERS



F-4300 Clamp-on Ultrasonic Flow Meter

Size: 1/2" ~ 48" | Liquid temperature: -40°F ~ 250°F
Accuracy: ±1.0% | Protection rating: NEMA 4X (IP67)
Sensor material: Stainless Steel 316 | Connection type: Clamp-on



F-4600 In-line Ultrasonic Flow Meter

Size: 1/2" ~ 2 1/2" | Operating temperature: 32°F ~ 250°F
Working pressure: 400 psi | Accuracy: ±1.0% / 2% | Protection rating: IP65



FP-4400 Portable Clamp-on Ultrasonic Flow Meter

Size: 1/2" ~ 48" | Liquid temperature: -40°F ~ 300°F
Velocity range: ±0.1 ~ 40 ft/s (±0.03 ~ 12.2 m/s)
Accuracy: ±1.0% | Power supply: Rechargeable battery (15 hours) or AC adapter (120-240 VAC) | Enclosure: IP67

BTU METERS (THERMAL ENERGY METERS)



BTU Meters (Thermal Energy Meters)

Used to display meter measurement parameters and calculate cooling capacity (BTU) | Direct display and BMS connectivity | Size: DN15 ~ DN1200

AIR/GAS FLOW METERS



Air/Gas Flow Meters

Used to display measurement parameters and calculate air/gas flow | Direct display and BMS connectivity





SPECIALIZED VALVES FOR WATER HEATING SYSTEMS

**Inta – United Kingdom
Flamco – Netherlands
Samyang - Korea**

To ensure a safe and energy-efficient hot water supply system that distributes hot water appropriately to all branches of the heating system, PGTECH provides high-quality specialized valves and equipment solutions such as thermal balancing valves, thermostatic mixing valves, safety valves, expansion vessels, pressure reducing valves, various types of Shut-off valves, flexible joints, measuring display equipment... from well-known brands in the EU, G7, Korea...

THERMOSTATIC MIXING VALVES



THERMOSTATIC MIXING VALVES FOR WATER HEATING SYSTEM AND BRANCH LINE WATER

Body: Brass/stainless steel | Working pressure : PN10/PN16 | Maximum inlet temperature: 90°C | Adjustable range: 30°C ~ 65°C / 45°C ~ 65°C / 35°C ~ 70°C / Anti-scald

THERMAL BALANCING VALVES



THERMAL BALANCING VALVES FOR HOT WATER CIRCULATION SYSTEMS

Body: Brass | Working pressure: PN10/PN16 | Maximum Inlet temperature: 90°C | Adjustable range: 40°C ~ 65°C

PRESSURE REDUCING VALVES



PRESSURE REDUCING VALVES FOR WATER SYSTEM

Body: Brass/Stainless steel/Ductile Iron | Flanged/Screwed connection | Working pressure: PN10/PN16/PN25 | Maximum working temperature: 80°C

SAFETY VALVES



SAFETY VALVES FOR WATER SYSTEMS

Body: Brass/Stainless steel/Ductile Iron | Flanged/Screwed Connection | Working pressure: PN10/PN16/PN25 | Maximum working temperature: 80°C/120°C (Optional)

PRESSURE TEMPERATURE SAFETY VALVES



BRASS THERMOSTATIC SAFETY VALVES

Working Pressure: 7Bar | Temperature: -10°C ~ 120°C

BACKFLOW PREVENTERS VALVES



BACKFLOW PREVENTERS VALVES FOR WATER SYSTEM

Body: Brass | Screwed connection | Working pressure: PN10 | Maximum working temperature: 65°C

OTHER VALVES



Brass Ball Valves, Screwed Connection
Working pressure: PN10/PN25/PN42
Maximum temperature : 180°C

Brass/Stainless Steel/Cast Iron/Ductile Iron Gate Valves, Flanged/Screwed Connection
Working pressure: PN10/PN16/PN25 | Maximum temperature : 180°C

Brass/Stainless steel/Cast Iron/ threaded/flanged Y-strainers
Working pressure: PN10/PN16/PN25
Maximum temperature : 180°C

Brass/ Cast iron air vent valves, Threaded connection
Working pressure: PN10/PN16/PN25
Maximum working temperature : 120°C



DAMPER ACTUATORS

Belimo - Switzerland

Belimo - Switzerland, is the world's largest manufacturer of Damper actuators, controlling more than 90% of the damper actuator market in Europe (EU) and over 70% in the United States. In Asia and Vietnam, Belimo holds a significant market share. PGTECH provides a full range of damper actuator solutions, including spring-return, Fail-Safe, and fire & smoke control types with torque rating ranging from 2 Nm to 40 Nm, opening/closing time ranging from 2 seconds to 150 seconds, originating from Switzerland and the United States.

STANDARD DAMPER ACTUATORS



DAMPER ACTUATORS – STANDARD TYPE

Electric control | Types of control: On-Off / Modulating / 3 points | Torque momen: 5Nm ~ 40Nm | Opening/Closing time: 150s

FAIL — SAFE DAMPER ACTUATORS



DAMPER ACTUATORS - FAIL-SAFE TYPE

Electric control | spring-return position integrated | Types of control: On-Off / Modulating | Torque Momen: 2.5Nm ~ 30Nm | Opening/Closing time: <25s

FAST ON/OFF DAMPER ACTUATORS



DAMPER ACTUATORS – FAST ON/OFF TYPE

Electric control | Types of control: On-Off / Modulating / 3 points | Torque momen: 2Nm ~ 20Nm | Opening/Closing time: 35s

FAST ON/OFF DAMPER ACTUATORS 2.5s–20s



DAMPER ACTUATORS – FAST ON/OFF 2.5s–20s TYPE

Electric control | Types of control: On-Off / Modulating / 3 points | Torque momen: 2Nm ~ 20Nm | Opening/Closing time: 35s

FIRE & SMOKE DAMPER ACTUATORS – EU



DAMPER ACTUATORS - FIRE & SMOKE CONTROL TYPE (EU series)

Electric control | Spring-return position integrated | Integrated temperature sensor (optional) | Types of control: On-Off / Modulating

FIRE & SMOKE DAMPER ACTUATORS – US



DAMPER ACTUATORS - FIRE SMOKE CONTROL TYPE (US Series)

Electric control | Spring-return position integrated | Additional temperature sensors can be installed | Types of control: On-Off / Modulating



SENSORS

Belimo - Switzerland

Belimo - Switzerland is not only renowned for its control valves and damper actuators but is also widely recognized in the field of HVAC automatic technology for its sensors. Offering a full range of sensor solutions for HVAC systems within the Field Devices category, Belimo has enhanced its solution offering for the market with a diverse range of high-precision, intelligent sensors originating from Europe (EU).

PRESSURE SENSORS



PRESSURE SENSORS FOR WATER AND AIR SYSTEMS
 Measuring Pressure and Differential Pressure | Output signal: switch type / 0 - 5V / 0 - 10V / 4 - 20mA / Modbus | Measurement range: -150 Pa ~ 25 Bar (optional)

TEMPERATURE SENSORS



TEMPERATURE SENSORS FOR WATER AND AIR SYSTEMS
 Temperature sensor | Measurement range : 50°C ~ 250°C (optional) | Output signal: switch type, PT100, PT1000, NI1000, NI1000IK5000, NTC10K2, NTC10K, NTC20K, NTC10K3, 0 - 5V, 0 - 10V, 4 - 20mA

HUMIDITY SENSORS



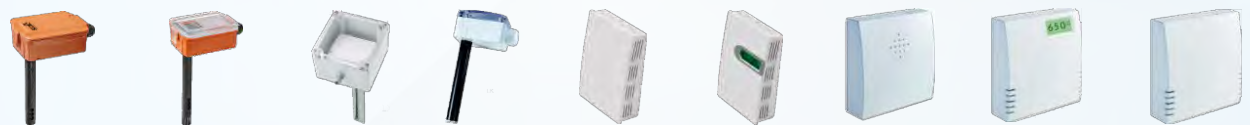
HUMIDITY SENSORS / HUMIDITY AND TEMPERATURE SENSORS FOR INDOOR AND OUTDOOR PIPING SYSTEMS
 Humidity meter / Humidity and temperature | Measurement range: 0 - 100RH (optional) | Output signal: switch type, 0 - 5V, 0 - 10V, 4 - 20mA, NTC10K3, Modbus, BACnet

LEVEL SENSORS



LEVEL SENSORS FOR WATER SYSTEM
 Level meter , Humidity/temperature meter | Measurement range: 0 - 100RH (optional) | Output signal: switch type, 0 - 5V, 0 - 10V, 4 - 20mA, NTC10K3, Modbus, BACnet

AIR SENSORS



AIR QUALITY SENSORS
 CO, CO₂, VOC concentration measurement | Output signal: 0 - 5V, 0 - 10V, 4 - 20mA, NTC10K2, Modbus, BACnet

FLOW SENSORS



FLOW SENSORS FOR WATER SYSTEMS
 Flow sensor | Size: DN15 - DN150 | Output signal: 0 - 10V | Flanged/Screwed Connection

AIR VELOCITY SENSORS



AIR VELOCITY SENSORS
 Output signal: 4 - 20mA, 0 - 10V

OTHER SENSORS



INDOOR SENSORS
 Integrated temperature, humidity and air quality sensor, concentration of CO, CO₂, VOC

TEMPERATURE ENERGY METERS
 Output signal: 0 - 10V, BACnet, Modbus, MP-Bus | Size: DN15 - DN50



HARD WATER TREATMENTS SOLUTIONS ACTIVFLO

Inta - United Kingdom

INTA/UK provides the most advanced solution for treating hard water and lime scale contamination in water nowadays. The ActivFlo technology from the United Kingdom does not use chemicals, salt regeneration, or cation resin beads. It does not discharge wastewater, consume electrical energy, and offers a long product lifespan. ActivFlo is efficiently applicable in residential, commercial, industrial, and agricultural settings. Particularly, ActivFlo is a cost-effective and efficient solution for operating hard water treatment systems in HVAC Chiller/Heating systems and water supply and drainage systems.

ACTIVFLO STANDARD



ACTIVFLO LITE - HARD WATER TREATMENT SOLUTION FOR RESIDENTIAL

Size: 15mm, 22mm, 28mm | Body: Brass, Chrome-plated | Treating hard water and lime scale in water system | Without using electricity

ACTIVFLO & ACTIVFLO COMMERCIAL



ACTIVFLO COMMERCIAL - HARD WATER TREATMENT SOLUTION

Size: 15mm, 22mm, 28mm / 1/2' ~ 6' | Body: High-quality SUS316 | Treating hard water and lime scale in water system | Without using electricity | Flanged or Screwed connection

ACTIVFLO PRO



ACTIVFLO COMMERCIAL - HARD WATER TREATMENT SOLUTION WITH POWER REGULATOR

Size: 22mm / 3/4' ~ 10' | Body: High-quality SUS316 | Treating hard water and lime scale in water system | Power Regulator | Flanged or Screwed connection



SOLUTIONS FOR POLLUTED WATER TREATMENT

Techneau - France

Techneau (France) is one of the leading manufacturers of solutions of Grease Separators, Oil Separators (machine maintenance shop, petroleum plant, garage, port...), Storm Separators, and Waste Water Station...

All separators of Techneau, made of stainless steel, polyethylene, and steel... with a variety of applications and sizes, have been equipped with automatic, advanced technology, commonly used in Europe and around the world.

GREASE AND STARCH SEPARATORS



Special Grease separators above ground installation
Stainless Steel size 2 EDGS 1 TN 2L/s

Grease separators with sludge trap
Polyethylene NS 1 - 20 Ellipse

Grease separators with sludge trap
Stainless steel NS 1 - 15 BDG

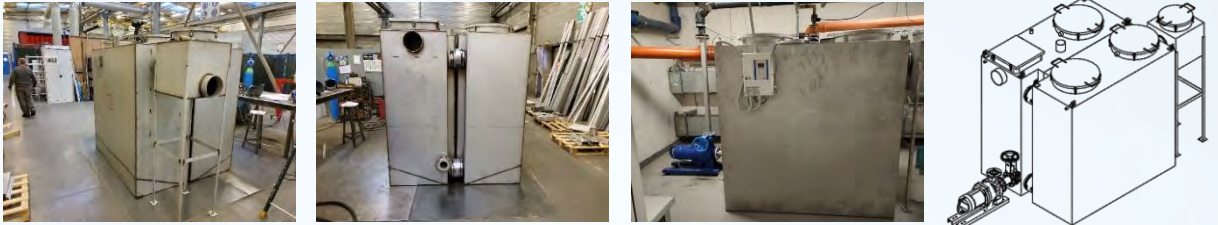
Mini-Grease separators under sink connection
Inox size 0,75 Mini GR

Mini-Grease separators Under sink connection
Polyethylene NS 0,75 GM1E

Grease separators with sludge trap
Polyethylene NS 30-40 DG

Grease separators with sludge trap
Polyethylene NS 1 - 20 TechnoSphère

AUTOMATIC GREASE SEPARATORS



Automatic Grease Separators use an automatic controller, valve and pump

OIL SEPARATORS (OILS)



Oil separator with sludge trap, coalescing filter and by-pass, size 1,5 - 35 l/s

Oil separator with sludge trap & coalescing filter, size 1,5 - 30 l/s
HydroCube

Oil separator with sludge trap & coalescing filter, size 1,5 - 30 l/s Ellipse

Cylindrical oil separator with sludge trap and coalescing filter, size 30 - 50 l/s

Cylindrical oil separator with sludge trap and coalescing filter, size 30 - 50 l/s

STORMWATER TREATMENT



Vertical tank without by-pass from 0.04 to 0.3ha

Decan'eau Solution Optimum Stormwater Treatment

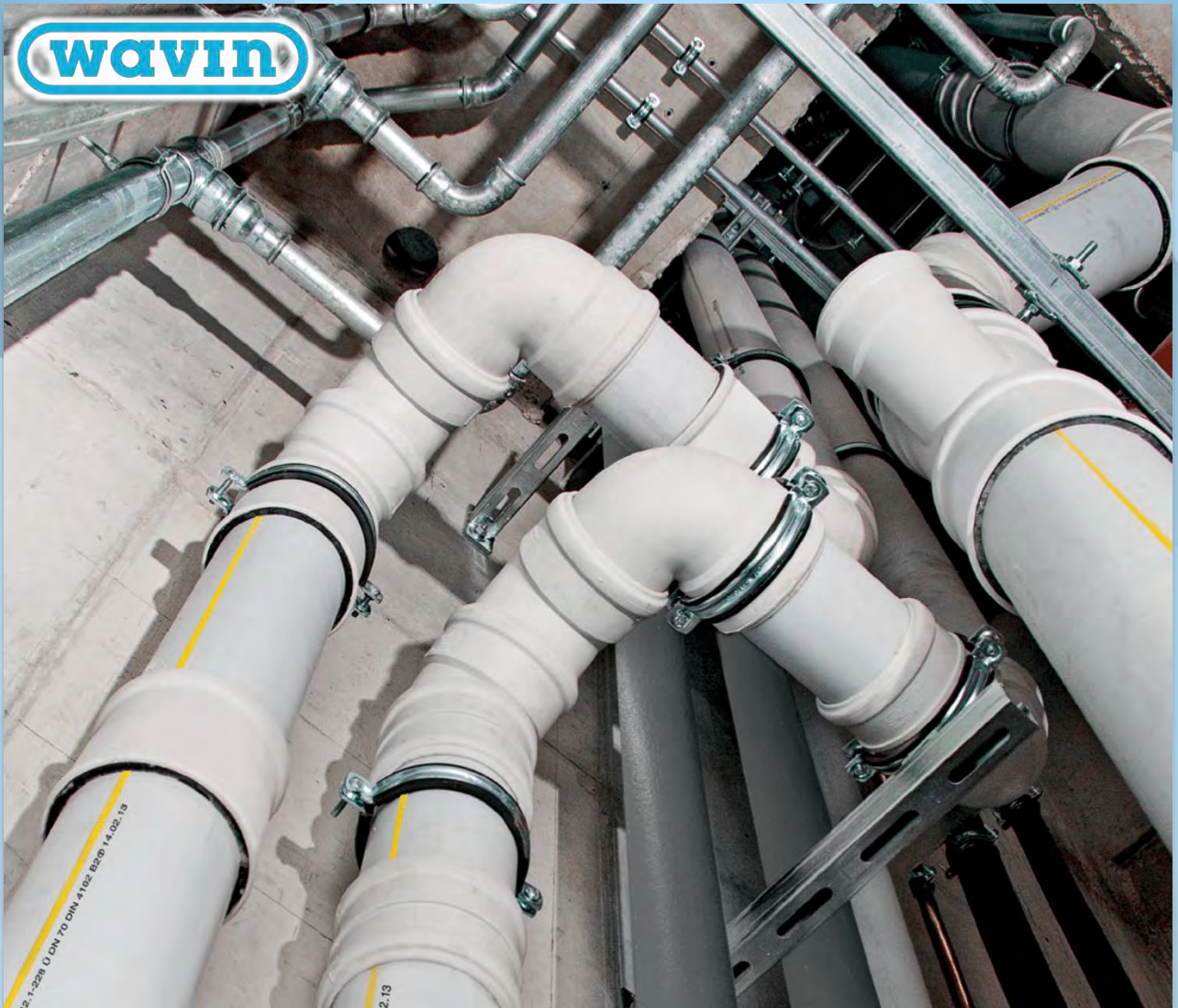
Horizontal tank without by-pass from 0.04 to 0.3ha

Light waste separator with coalescing filter, size 3 - 50 l/s Aronde

WASTE WATER TREATMENT STATION



Waste water submersible pumping station for private houses, dormitories, apartments, small, medium -sized commercial buildings ...



ACOUSTIC PIPE & POTABLE/ DOMESTIC WATER PIPE

WAVIN – Hà Lan

WAVIN is a global corporation specializing in plastic piping solutions such as acoustic pipes and potable water pipes. Headquartered in the Netherlands, WAVIN has over 70 years of experience, nearly 50 manufacturing facilities, and serves almost 100 countries worldwide.

WAVIN acoustic pipes are high-quality products with excellent sound insulation and durability. Together with WAVIN potable water pipes, certified for drinking water use and known for outstanding longevity, they are the top choice for every project.

ACOUSTIC PIPES AND FITTINGS



Wavin AS+ Acoustic Pipe

A premium sound-insulated drainage system for wastewater and grey water, made from mineral-reinforced polypropylene (PP).
 Sizes DN/OD: 50 – 200 mm | Wall thickness: 3 – 6 mm | Operating temperature: up to 90°C continuous, 95°C peak | Push-fit connection.
 Available lengths: 150 mm, 250 mm, 500 mm, 1000 mm, 2000 mm, 2700 mm, 3000 mm.



Wavin AS+ Acoustic Pipe Fittings

Fittings made from mineral-reinforced polypropylene (PP) | Push-fit connection | Pre-lubricated EPDM sealing ring | Easy installation.

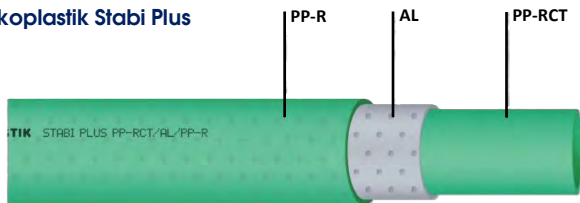


Other Types of Fittings

POTABLE / DOMESTIC WATER PIPES

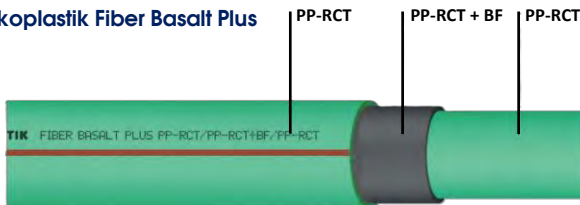
Length: 1 piece of 3000 / 4000 mm

Ekoplastik Stabi Plus



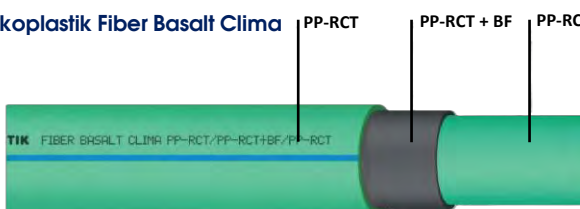
- 4-layer pipe (PP-R + AL + PP-RCT).
- Three times lower thermal expansion.
- Oxygen diffusion barrier layer.
- Suitable for heating systems.
- Complies with EN ISO 15874 and DIN 8077 standards for potable water.

Ekoplastik Fiber Basalt Plus



- 3-layer pipe (PP-RCT + BF + PP-RCT).
- Three times lower thermal expansion.
- No peeling required before welding.
- Suitable for hot water and heating systems.
- Complies with EN ISO 15874 and DIN 8077 standards for potable water.

Ekoplastik Fiber Basalt Clima



- 4-layer pipe (PP-RCT + BF + OB + PP-RCT).
- Three times lower thermal expansion.
- No peeling required before welding.
- Suitable for cold water and air-conditioning systems.
- Complies with EN ISO 15874 and DIN 8077 standards for potable water.



OTHER PRODUCTS

Tozen - Japan
Belimo - Switzerland
Inta – United Kingdom
Onicon - USA
Flamco – Netherlands
Comap - France
Fesco – Korea
Samyang - Korea
Cidong - Korea

With a various range of products from leading global manufacturers such as Flamco (Netherlands), Belimo (Switzerland), TOZEN (Japan), PA (Germany), INTA (United Kingdom), Samyang (Korea), Paratech/Fesco (Korea), Cidong (Korea), Comap (France), etc, PGTECH can provide diverse solutions in the field of M&E equipment. We offer tailored solutions based on customer requirements and find the most cost-effective solutions. If your company has specific equipment needs or concerns, please share them with PGTECH. We will work to find the best solutions to meet your company's requirements.

SHOWERS



SHOWER

Designed with high-quality stainless steel using the most advanced technology from the United Kingdom, products have a long lifespan and are particularly safe for users

SHOWER TAPS



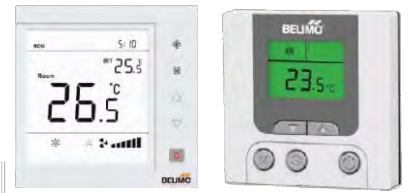
SHOWER TAPS

Designed with high-quality stainless steel using the most advanced technology from the United Kingdom, products have a long lifespan and are particularly safe for users

VALVE AND OTHER EQUIPMENT

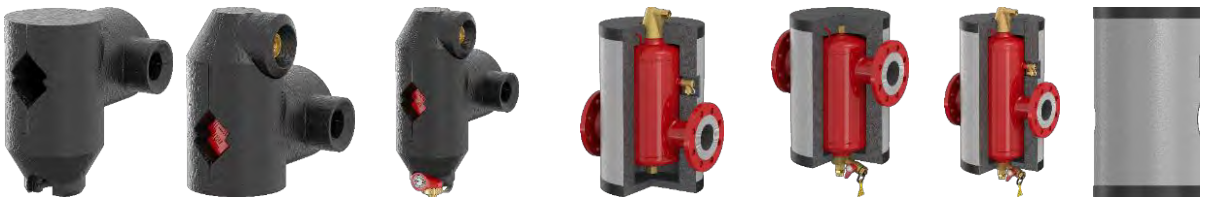


EU standard drinking water taps



Room temperature control equipment

INSTALLATION ACCESSORIES



Heat insulation protection coating for Air separator, Grooved/Flanged/Screwed connection



Replacement and installation accessories for air separator



Heat insulation protection for hot water tank



Installation accessories for pressure and temperature gauge



T-Plus quick pipe connector



Heat insulation protection for pressurized thermal storage tank

COOPERATIVE ACTIVITIES

❖ SOME IMAGES OF REPRESENTATIVES VISITING PGTECH



TOZEN/JAPAN



BELIMO/SWITZERLAND



FLAMCO/NETHERLANDS



PA /GERMANY-SLOVAKIA



FESCO/KOREA



SAMYANG/KOREA

COOPERATIVE ACTIVITIES

❖ SOME IMAGES OF REPRESENTATIVES VISITING PGTECH



MSA/CZECH REPUBLIC



TECHNEAU/FRANCE



ECOTHERM/AUSTRIA



ONICON/USA

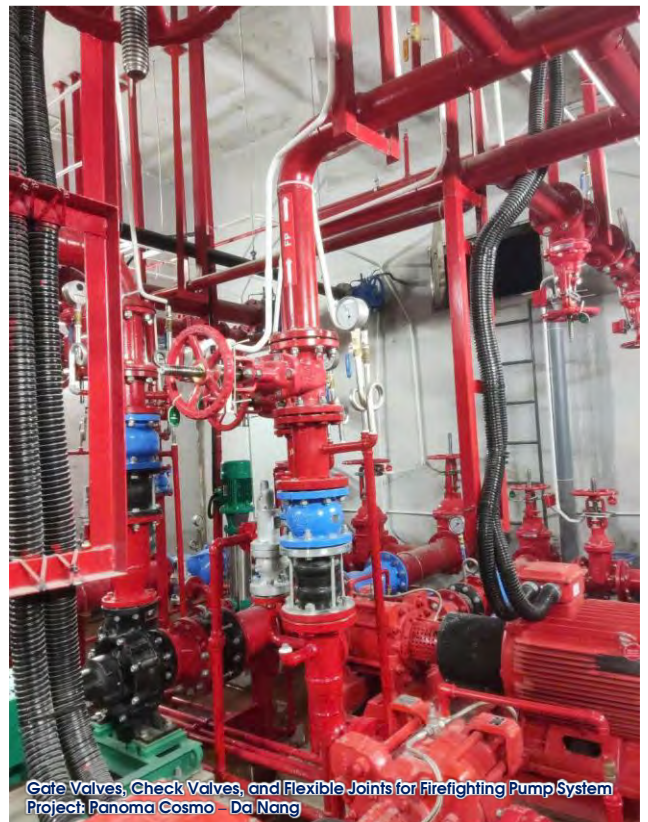
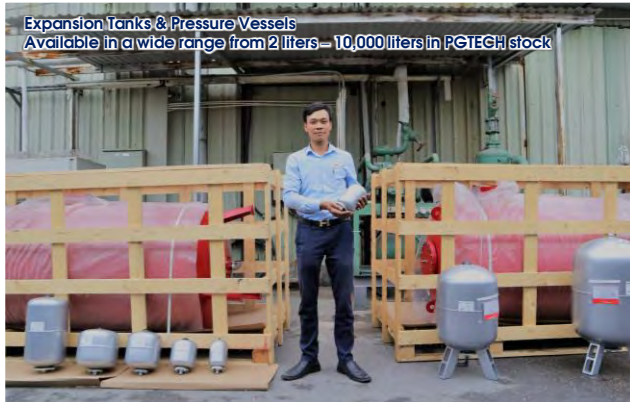
WAREHOUSE CAPACITY

❖ SOME IMAGES OF PGTECH'S WAREHOUSE



REALISTIC IMAGES

❖ SOME REALISTIC IMAGES AT CONSTRUCTION SIDE USING PGTECH'S SOLUTIONS



REALISTIC IMAGES

❖ SOME REALISTIC IMAGES AT CONSTRUCTION SIDE USING PGTECH'S SOLUTIONS



Expansion Tanks and Smart Air Separator Equipment
Project: VietinBank Data Center – Hanoi



Smart Suction Diffuser
Project: Lotte Mall Tay Ho – Hanoi



Various Mechanical Valves for Chiller System
Project: Viettel Data Center

REALISTIC IMAGES

❖ SOME REALISTIC IMAGES AT CONSTRUCTION SIDE USING PGTECH'S SOLUTIONS



Pressurization and Vacuum Degassing System
Project: Viettel Data Center – Hanoi



Pressurization System
Project: Dwight School International – Hanoi



Mechanical Valves for Firefighting System
Project: Sun Rante – Da Nang

TYPICAL PROJECTS

❖ APARTMENTS, COMMERCIAL BUILDINGS, HOTELS, RESORTS



**Sun Grand City
Tay Ho – Hanoi**



**The Panorama – Sun Cosmo
Residence Da Nang**



**D'.Capitale Tran Duy Hung
Hanoi**



**HUD Tower Le Van Luong
Hanoi**



**Hotels and Resorts
Sun World Ba Na Hills**



**Nam Phuong Palace
Sun Paradise Land-Phu Quoc**



**Shilla Hotel – Starlake Urban
Area, West Lake – Hanoi**



**Sun Sam Son
Thanh Hoa**



**Sun Grand City Ancora
Luong Yen – Hanoi**



**Sol Forest Building
Ecopark, Hung Yen**



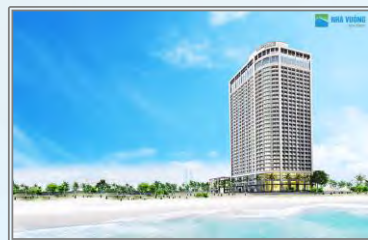
**Sun Grand City Hillside
Residence – Phu Quoc**



**Malibu Hoi An
Resorts and Villas**



Sun Cat Ba – Hai Phong



**Alphanam Luxury
Da Nang**



**The Opera Residence
Metropole Thu Thiem**

TYPICAL PROJECTS

❖ APARTMENTS, COMMERCIAL BUILDINGS, HOTELS, RESORTS



Sky Oasis Khu Đô Thị Ecopark Hưng Yên



Dragon Hill Project – Hai Phong



Techcombank Building No. 44 Ly Thuong Kiet Hanoi



VINPEARL Nha Trang



Swisstouches Laluna Resort Nha Trang



Lovera Vista Khang Dien Ho Chi Minh City



Panorama Nha Trang



Hateco La Roma Building, Hanoi



Residence Quy Nhon



T&T Victoria Building Nghe An



The Zei Building Le Duc Tho - Hanoi



Flora Akari City Tan Binh - Ho Chi Minh City



Thien Nien Ky HaTay Millennium Tower- Hanoi



Mon Home Mon City Hai Dang Building Phase 2 - Hanoi



Sunworld Ba Na Hills Đà Nẵng

TYPICAL PROJECTS

❖ APARTMENTS, COMMERCIAL BUILDINGS, HOTELS, RESORTS



Long Thuan Resort
Binh Son - Ninh Thuan



Novaland Guest house
Ho Chi Minh City



Ecohome 3
Bac Tu Liem - Hanoi



Alma Resort
Cam Ranh - Khanh Hoa



Bai Tram Estates Resort
Phu Yen



Flamingo Cat Ba
Beach & Resort



Hanoi Grand Mercure
Hotel - Hanoi



Hai Phong Chuo Hotel
Vietnam



Aquabay Sky
Residences Urban Area
Hung Yen



Movenpick Phu Quoc
Condotel & Villa



Altara Residences
Quy Nhon



Marriott Hotel Da Nang



Opal Boulevard Building
Binh Duong



Aqua Park Commercial
Residential Building
Bac Giang



Hinode City Plaza
Minh Khai - Hanoi

TYPICAL PROJECTS

❖ APARTMENTS, COMMERCIAL BUILDINGS, HOTELS, RESORTS



**Toriental Sun Tower
198 – Tran Quang Khai**



**King Palace Hanoi
108 Nguyen Trai - Hanoi**



**90 Nguyen Tuan Luxury
Building - Hanoi**



**Vinaconex 34 Office
Building - Hanoi**



**ICID Complex Building
Ha Dong - Hanoi**



**Dai Phuoc Lotus
Nhon Trach- Dong Nai**



**Ha Thanh Hotel
Ha Long – Quang Ninh**



**Republic Plaza
Ho Chi Minh City**



**Festival Vung Tau
Vung Tau City**



**Thanh Cong Residence
Building- 345 Doi Can**



**Casino Hoi An
Quang Nam Province**



**BIDV Tower
Tran Quang Khai - Hanoi**



**Mandrin Garden 2
Hoa Phat Group - Hanoi**



**Heritage West Lake
Hanoi**



**Hot mineral resort My
An –Thua Thien Hue**

TYPICAL PROJECTS

❖ APARTMENTS, COMMERCIAL BUILDINGS, HOTELS,



Richstar Building
Tan Phu – Ho Chi Minh



Aqua Bay Ecopark
Hanoi



Osaka Complex Building - Hanoi



The Legend
109 Nguyen Tuan - Hanoi



Vinpearl Empire
Condotel Nha Trang



Jamilia Khang Dien
Ho Chi Minh City



Vinhomes Shophouse
Thanh Hoa – Thanh Hoa City



Vinhomes Sky Lake
Pham Hung - Hanoi



Vincom Shophouse
Lang Son – Lang Son city



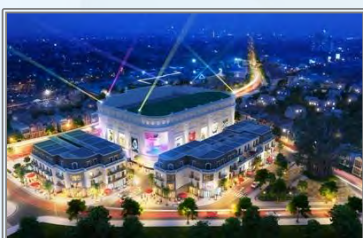
Vinhomes Green Bay
Me Tri Hanoi



Ha Do Centrosa Garden
Ho Chi Minh City



Ocean Gate Nha Trang
Hotel & Residence



Vincom Shophouse
Thai Nguyen city



Sonasea Condotel
& Villas Phu Quoc



Vinhomes Metropolis
Lieu Giai - Hanoi

TYPICAL PROJECTS

❖ APARTMENTS, COMMERCIAL BUILDINGS, HOTELS, RESORTS



VIE building 28A Tran Hung Dao



Vinhomes Ha Nam



Flamingo Dai Lai Resort Vinh Phuc



Vinhomes Bac Ninh



Dabaco Shopping Mall Que Vo – Bac Ninh



Imperia Sky Garden Hanoi



Renovation Sun Red River Building Hanoi



Holiday hotel Nha Trang city



Bau Tram lakeside Danang



Han Jardin Building – Ngoai Giao Doan, Hanoi



Lotte Mall – Tay Ho, Hanoi



FLC Garden City – Dai Mo, Hanoi



Four Seasons Hotel – Hoan Kiem, Hanoi



Vinhomes Ocean Park, Hanoi



Pullman Hotel – Haiphong

TYPICAL PROJECTS

❖ APARTMENTS, COMMERCIAL BUILDINGS, HOTELS, RESORTS



**Shophouse Western Village
Hon Thom, Phu Quoc**



**Courtyard by Marriott
Hotel – Da Nang**



**5-Star Pullman Hotel
Ninh Binh**



**Muong Hoa Cultural
Park – Sapa**



**Bai Kem – Sun Premier
Village Kem Beach Resort**



**Tramonto Hotel
Mediterranean Town, Phu Quoc**



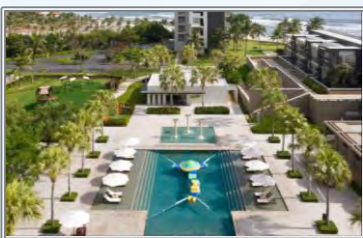
**Charm Resort Long Hai Ba
Ria - Vung Tau Province**



**5-Star Amiana Resort
Nha Trang**



**Sun Tropical Village
Tropical Village Phu Quoc**



**Hyatt Regency Da Nang
Resort & Spa**



**Fairmont Hotel Hanoi
10 Tran Nguyen Han**



**Sonasea Van Don
Quang Ninh**



**Kawara My An
Onsen Resort – Hue**



**Shophouse Santorini
Hon Thom, Phu Quoc**



**Flamingo Linh Truong
Thanh Hoa**

TYPICAL PROJECTS

❖ STATE AGENCIES AND ENTERPRISES



National Convention Center



Vietnam Military History Museum



Viettel Data Center (IDC) Hoa Lac



Noi Bai International Airport



Hanoi City Party Committee Headquarters Building



State Treasury - 32 Cat Linh, Hanoi



State Bank of Vietnam Headquarters - Hanoi



Military Broadcasting and Television Center



Renovation of the Ministry of Public Security Headquarters - Hanoi



Supreme People's Court Headquarters - Hanoi City



Pediatric Hospital Ho Chi Minh City



Headquarters Building of the Telecommunications Bureau - Hanoi



Customs Department Headquarters - Ho Chi Minh City



Viettel Military Telecommunications Group Headquarters - Cau Giay, Hanoi



Military Hospital 103 Ha Dong - Hanoi

TYPICAL PROJECTS

❖ STATE AGENCIES AND ENTERPRISES



**Green One UN House,
Vietnam UNDP Headquarters**



**Traditional Medicine
Hospital of the Ministry of
Public Security**



**Vientiane Complex
Vieng Chan - Lao**



**Vietnam National Convention
Center - Tu Liem, Hanoi**



**Hydropower Plant
Xekaman 1 - Lao**



**Metro Station
Hanoi**



EVN Tower Tay Ninh



**General Hospital
Thai Binh**



**General Hospital
Lang Son**



**Training Center
Royal Tay Ho - Hanoi**



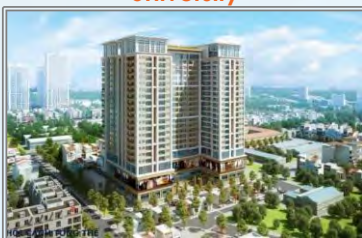
**Lecture Hall Building
National Economics
University**



**Nam Nua Hydropower
Dien Bien**



**Vietinbank Building
Vieng Chan - Lao**



**Officers and Soldiers of
the Ministry of Public
Security Building - Hanoi**



**TOMECH High-Tech
Medical Center
Hanoi**

❖ FACTORIES AND EXPORT PROCESSING ZONES



**Crystal Martin Vietnam
Quang Chau, Bac Giang**



Medical B. Braun Hanoi



Hung Yen Thermal Power Plant



**Vina Kraft Paper Factory
Binh Duong, Vietnam**



**Sakai Mineral
Processing Factory -Laos**



**Sei Electronic
Components, Vietnam**



**Hai Phong Pegastron
Factory**



**Samsung R&D Center
Hanoi**



**Toyota Gosei Factory
Thai Binh, Vietnam**



**Vinasanfu material factory,
Dinh Vu, Hai Phong**



**No.3 Central Pharmaceutical,
Hai Phong, Vietnam**



**Vietnam FCC Factory
Thang Long Industrial Zone, Hanoi**



**Hung Yen ADC Plastic
Factory**



**Viet Hung Packaging
Factory
Hung Yen -Vietnam**



**MMPA LNG Storage
Warehouse 1
Thi Vai Port ,Vung Tau**

❖ FACTORIES AND EXPORT PROCESSING ZONES



Nghi Son 1 Thermal Power Plant
Tinh Gia ,Thanh Hoa



Kyocera Vietnam
Factory Hung Yen



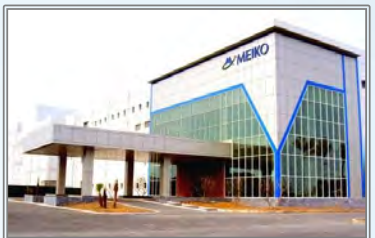
ABB Factory
Bac Ninh, Vietnam



Ngoc Tuan Water Plant
Hung Yen



ECCO's factory
Binh Duong, Vietnam



Meiko Electronics Vietnam
Hanoi



Bati Logistic center
Hanoi -Bac Ninh



Nam Ha Pharmaceutical
Factory Nam Dinh



Amkor Technology Vietnam



Nghi Son Refinery
Thanh Hoa



Sumidenso Factory
Hai Duong



Hitachi Cable Factory
Hai Duong



Sumiden Vietnam
Automotive



Viet Avis's poultry slaughtering
and processing factory



VSMART factory
Hai Phong

❖ FACTORIES AND EXPORT PROCESSING ZONES



Vietnam Jabil Factory



TAMURA Vietnam Factory
Vinh Phuc



VNG Software production
and development center
Ho Chi Minh City



Rorze Robotech factory
Hai Phong



VinFast vehicle factory
Hai Phong



Hanoi Tsuchiya TSCO factory
Vinh Phuc



TOTO Factory Phase II
Hung Yen



Vung Ang 1 Thermal Power Plant
Ky Anh - Ha Tinh



YFY Packaging factory
Ha Nam



Accredo Asia factory
Binh Duong



Southeast Duc Giang
Oil Depot Hanoi



Vietnam Best Pacific factory
Hai Duong



Vietnam Kanefusa factory
Thang Long Industrial zone ,
Vinh Phuc



Vietnam Best Pacific
Factory phase 2
Hai Duong



Canon Vietnam Que Vo Factory
Bac Ninh

TYPICAL PROJECTS

❖ FACTORY AND EXPORT PROCESSING ZONE PROJECTS



Vietnam Daiwa factory
Da Nang, Vietnam



Gold Sun factory
Que Vo Industrial Zone, Bac Ninh,



Hung Yen Thermal
Power Plant



Formosa Ha Tinh Industrial
Park



Perfetti Van Melle Vietnam



Mapletree Logistics Warehouse
Bac Ninh



Heiwa factory
Bac Ninh



Hoa Phat Steel Sheet factory
Hung Yen



Nestlé milk factory
Myanmar



WINGA Garment Factory –
Tay Ninh



Honda 3 Factory 3
Ha Nam



Tan Binh Chemical Factory 2
Dong Nai



Vinh Tan 1 Thermal Power Plant
Binh Thuan



TOTO Vietnam Faucet
Factory – Vinh Phuc



Samsung Electro – mechanics
Vietnam – Thai Nguyen

TYPICAL PROJECTS

❖ FACTORY AND EXPORT PROCESSING ZONE PROJECTS



**Craft Brewery at Sun World
Hon Thom, Phu Quoc**



**Craft Brewery at Sun World
Ba Na Hills, Da Nang**



**Viet Y Steel Factory – Cau
Kien Southeast Industrial Park**



**BANDO Vietnam
Manufacturing Plant**



**Meiko PCB Factory
Hoa Binh**



**Centralized Wastewater
Treatment Plant
An Phat 1 Industrial Park**



SMC Factory – Dong Nai



Solutions to Better Values



Thank You!

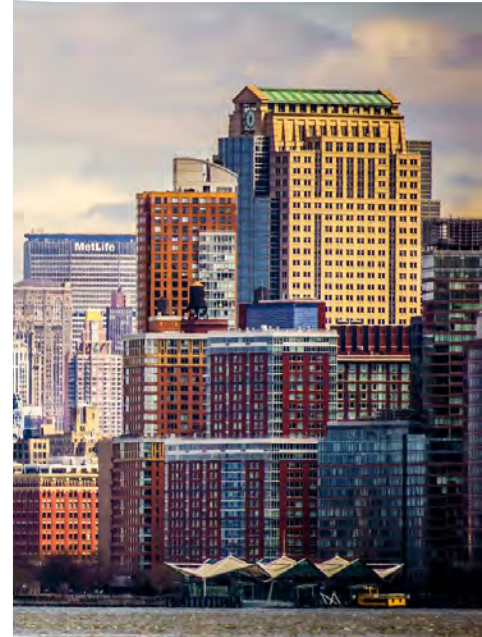


PGTECH GROUP LIMITED

Office address: 3rd Floor, C14-CT1 Building, To Huu Str, Dai Mo Ward, Hanoi City.

Registered address: No 12, Lane 28, Quang An Str, Tay Ho Ward, Hanoi City, Vietnam

Tel: +84-24-7302 3588 - **Email:** sales@pgtech.com.vn - **Website:** pgtech.com.vn



PGTECH CORE VALUES

With the desire of bringing true value to M&E systems of construction projects, so that residents and society can benefit from these values, PGTECH collaborates with world-renowned manufacturers to provide excellent and safe solutions with cost savings and the most advanced technology.



Trusted Brands

Global brands from EU countries G7 countries and Korea, etc.

Advanced Solution & Technology

Unique and effective solution for M&E systems with high durability and long lifespan.

Safe And User-friendly

Use high-quality materials evaluated and tested by renowned organizations around the world.

Cost Savings

Competitive product price and high performance helps save energy effectively.

Service Quality

In-depth technical support. Fast delivery. Efficient after-sales service, best support to customers.

PGTECH GROUP LIMITED

Office address: 3rd Floor, C14-CT1 Building, To Huu Str, Dai Mo Ward, Hanoi City.

Registered address: No 12, Lane 28, Quang An Str, Tay Ho Ward, Hanoi City, Vietnam

Tel: +84-24-7302 3588 - Email: sales@pgtech.com.vn - Website: pgtech.com.vn