



# HEADLINE

## B R O C H U R E

**PGTECH COMPANY LIMITED**

**Office address:** 3<sup>rd</sup> Floor, C14-CT1 Building,  
To Huu Street, Trung Van Ward, Nam Tu Liem District, Hanoi City.

**Registered address:** No 12, Lane 28, Quang An Ward, Tay Ho District, Hanoi City, Vietnam

**Tel:** +84-24-7302 3588 - **Email:** sales@pgtech.com.vn - **Website:** pgtech.com.vn



*Solutions to Better Values*

**SOLUTIONS PROVIDER FOR M&E SYSTEMS**





# TABLE OF CONTENTS

1. Open letter .....	page 1
2. Company profile .....	page 2
3. Organizational chart .....	page 3
4. Major brands and Business partners .....	page 4
Typical brands .....	page 4
Typical investors .....	page 5
Typical M&E contractors .....	page 6
5. Manual valves .....	page 7
6. Pressure reducing valves .....	page 9
7. Safety valves .....	page 11
8. Float valves .....	page 13
9. Water hammer cushion .....	page 15
10. Steam valves .....	page 17
11. Industrial valves for oil, gas & liquid (API) .....	page 21
12. Balancing valves .....	page 23
13. Characterized water control valves .....	page 25
14. Characterized steam control valves .....	page 27
15. Flexible joints .....	page 29
16. Spring vibration isolators .....	page 31
17. Solutions for HVAC .....	page 33
18. Expansion vessels .....	page 37
19. Buffer vessels/tanks .....	page 39
20. Water heaters .....	page 41
21. Solution for heating system (Heating tanks, boilers...) .....	page 43
22. Fire fighting valves & equipment .....	page 47
23. Measuring equipment .....	page 51
24. Specialized valves for water heating systems .....	page 53
25. Damper actuators .....	page 55
26. Sensors .....	page 57
27. Hard water treatment solution Activflo .....	page 59
28. Solutions for polluted water treatment .....	page 61
29. Other products .....	page 63
30. Cooperative activities .....	page 65
31. Warehouse capacity .....	page 66
32. Realistic images .....	page 67
33. Typical projects .....	page 68
Apartments, commercial buildings, hotels, resorts .....	page 68
State agencies and enterprise .....	page 74
Factory projects, export processing zones .....	page 76

# OPEN LETTER

## ***Dear valued customers!***

First of all, PGTECH would like to send our best regards and wishes to you all. We hope that you will be getting more and more developed.

As an experienced M&E solution provider and authorized distributor of famous global brands from industrialized countries such as Europe, G7 and Korea etc., we offer a wide range of solutions for HVAC, water supply, fire-fighting protection and prevention, steam, gas, and liquid systems. We are honored to be granted opportunities to collaborate with our valued clients in providing advanced M&E solutions for their critical projects.

For ages of operation in the field of M&E equipment distribution, we have provided solutions for thousands of large and small projects across the country and the region. We have gained trust from the manufacturers and obtained a great supportive pricing policy, technical training and transfer, timely delivery schedule, after-sales services, etc. This has thus built a strong foundation for us to provide our best assistance and services for our clients and the entire M&E market in general. In addition, our strong financial and large warehouse capabilities with wide-range products and big volume of quantities are the concrete basis enabling us to fully catch up with project schedules and implement large-scale projects with the best quality assurance.

The world-wide prestigious core brands of PGTECH consist of Flamco (Netherlands), Comap (France), Belimo (Switzerland), TOZEN (Japan), PA (Slovakia/Germany), Inta (UK), Cidong, Paratech/Fesco (Korea), Samyang (Korea) and Wonil (Korea). The key solutions and products include industrial valves (mechanical valves, control valves, balancing valves), flexible joints, vibration isolation solutions (Spring and rubber vibration isolators), degassing systems, pressurization systems, air & dirt separators, pressure tanks (expansion vessels), Buffer tanks (storage tanks/water heaters), sensors, display measuring devices, thermostats, fire protection equipment etc.

With our immense prestige and capability of distribution, we have been selected to participate in projects with a scale of hundreds of millions or even billions of US dollars, including the government, the private-invested and FDI projects in the economic sector. Moreover, we have strived to be a more trusted and highly appreciated supplier and distributor of M&E solutions to develop significant projects of the country. We are seeking to gain a long-term and effective collaboration with the prominent customers.

We sincerely express our gratitude to your trust and successful mutual collaboration in the past period and continue to strive to gain more efficient cooperation with you in coming time.

**On Behalf of Company Director Board**



**Do Thi Thao**  
**Sales Director**



## PGTECH COMPANY LIMITED

**Office address:** 3<sup>rd</sup> Floor, C14-CT1 Building,

To Huu Street, Trung Van Ward, Nam Tu Liem District, Hanoi City.

**Registered address:** No 12, Lane 28, Quang An Ward, Tay Ho District, Hanoi City, Vietnam

**Tel:** +84-24-7302 3588 - **Email:** sales@pgtech.com.vn - **Website:** pgtech.com.vn

### COMPANY OVERVIEW

- ✓ **Founded year:** 2016
- ✓ **Total number of employees:** > 30
- ✓ **Office area:** 300m<sup>2</sup>
- ✓ **Charter capital:** >1.000.000 USD
- ✓ **Working capital:** USD 2.500.000 - 3.000.000
- ✓ **Warehouse capacity:** USD 4.000.000 - 4.500.000
- ✓ **Number of products in stock:** 550.000 - 600.000 pcs
- ✓ **Storage capacity (m<sup>3</sup>):** 550 - 600m<sup>3</sup> (Equipment of water, steam, air, fire fighting, liquid system)

### SOLUTIONS

#### SOLUTIONS FOR HVAC SYSTEM

- ✓ Control valves
- ✓ Damper actuators
- ✓ Fire and smoke damper actuators
- ✓ Sensors
- ✓ Measuring equipment
- ✓ Temperature controllers
- ✓ High-capacity water heaters
- ✓ Electric boilers
- ✓ Vacuum degassing systems
- ✓ Pressurization and degassing systems

#### WATER TREATMENT SOLUTIONS

- ✓ Hardwater Treatments
- ✓ 4 Micron electromagnetic filters
- ✓ Vacuum Degassers
- ✓ Air separators
- ✓ Dirt and air separators
- ✓ Grease and starch separators
- ✓ Oil separators (Oils)
- ✓ Stormwater treatment
- ✓ Waste water treatment station
- ✓ Other water filtration and treatment solutions

#### SOLUTIONS FOR WATER SUPPLY AND DRAINAGE SYSTEM

- ✓ Manual valves
- ✓ Balancing valves
- ✓ Air and dirt separators
- ✓ Expansion vessels
- ✓ Buffer tanks
- ✓ Pressurization and degassing systems

#### STEAM AND AIR SYSTEM SOLUTIONS

- ✓ Steam traps
- ✓ Drain separators
- ✓ Steam pressure reducing valves
- ✓ Steam safety valves
- ✓ Manual valves for steam
- ✓ Thermal expansion joints

#### SOLUTIONS FOR FIRE FIGHTING SYSTEM

- ✓ Sprinkler heads
- ✓ Flexible joints for Sprinklers
- ✓ Alarm valves, deluge valves
- ✓ UL/FM valves
- ✓ Flow switches
- ✓ Pressure switches

#### VIBRATION ISOLATION SOLUTIONS

- ✓ Flexible joints
- ✓ Spring isolators
- ✓ Vibration isolation rubber pads
- ✓ Floor mounted rubber vibration isolators
- ✓ Water hammer arresters

### TECHNICAL CAPABILITY

- ✓ **PGTECH:** Providing technical training for contractors, consultants, and investors about the solutions
- ✓ **Installation consultation:** Providing consultation and installation guidance within supplying scopes
- ✓ **Manufacturer:** Providing technical training programs by manufacturer's experts when needed

# ORGANIZATIONAL CHART





## TYPICAL BRANDS

**TOZEN**  
*A joint reliance*

**PARATECH**  
**FESCO**

 **Flamco**  
Flow of Innovation

**COMAP**  
SOLUTIONS FOR EFFICIENCY

 **ECOTHERM**<sup>®</sup>  
HEAT TRANSFER SOLUTIONS

**Techn***eau*

**BELIMO**<sup>®</sup>

**inta PA**

**MSA**

 **CIDONG**

 **ONICON**  
Flow and Energy Measurement



(주)원일산업  
WONIL INDUSTRY

**SAMYANG**  
SYSTEM GROUP

# BUSINESS PARTNERS

## ❖ TYPICAL INVESTORS



**LOTTE**  
DATA COMMUNICATION



**VINGROUP**



**TAN HOANG MINH  
GROUP**

**SAMSUNG**



**SUN GROUP®**

**viettel**

Theo cách của bạn

**GELEXIMCO**



**BRG**  
**GROUP**



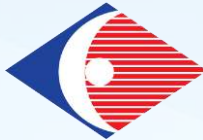
**G R O U P**





# BUSINESS PARTNERS

## ❖ TYPICAL M&E CONTRACTORS



NORTH STAR  
CONSTRUCTION - TRADING., JSC





# MANUAL VALVES

Tozen - Japan  
Wonil – Korea  
Samyang – Korea  
Inta – United Kingdom

PGTECH has a full range of manual valves for HVAC, Water Supply and Drainage, Fire Protection, Steam, Gas, Oil, Chemical systems etc. from the world's leading reputable manufacturers such as Japan, Korea, European and G7 countries etc. The manual valves can be made of copper, steel, stainless steel, plastic etc. and have operation capacity under high temperature and pressure resistance to meet various engineering applications.



## BALL VALVES



Brass ball valves, threaded-end  
Pressure: PN21 | Temperature: -10°C - 180°C



Cast iron ball valves, flanged-end  
Pressure: 0.98MPa | Temperature: 5°C - 60°C



Steel ball valves hand-wheel/lever type  
Pressure: 0.98MPa | Temperature: 5°C - 60°C



1-piece/3-piece stainless steel ball valves  
Pressure: 0.98MPa | Temperature: 5°C - 60°C



3-way/4-way stainless steel ball valves, flanged-end  
Pressure: 0.98MPa | Temperature: 120°C

## GATE VALVES



Brass gate valves, rising/non-rising stem, threaded-end  
Pressure: PN25 | Temperature: -10°C - 180°C



Stainless steel gate valves, threaded-end  
Pressure: PN16 | Temperature: -29°C - 180°C



Stainless steel gate valves, flanged-end  
Pressure: PN16 | Temperature: -10°C - 180°C



Ductile iron gate valves - rising/non-rising stem, flanged end  
Pressure: PN16/PN25 | Temperature: -10°C - 120°C



Stainless steel gate valves, flanged-end  
Pressure: PN16/PN25 | Temperature: -10°C - 120°C

## GLOBE VALVES



Threaded brass globe valves  
Pressure: 300 PSI



Threaded stainless steel globe valves  
Pressure: 0.98 MPa | Temperature: 180°C



Flanged cast iron globe valves  
Pressure: PN16 | Temperature: -10°C - 120°C



Flanged cast iron globe valves  
Pressure: PN16 | Temperature: -10°C - 200°C



Flanged steel globe valves  
Pressure: 0.98 MPa | Temperature: 120°C



Flanged steel/stainless steel globe valves  
Pressure: 0.98 MPa | Temperature: 180°C

## BUTTERFLY VALVES



Cast iron butterfly valves - Water type  
Pressure: PN16/PN25 | Temperature: -20°C - 110°C



Cast iron butterfly valves - Lug type  
Pressure: PN16/PN25 | Temperature: -20°C - 110°C



Cast iron butterfly valves - 2 flanges type  
Pressure: PN10/ PN16/PN25 | Temperature: -20°C - 110°C



Stainless steel butterfly valves - Water type  
Pressure: PN16/PN25 | Temperature: -10°C - 135°C



## CHECK VALVES



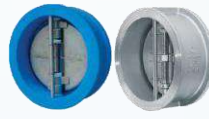
Threaded Bronze/Stainless steel swing check valves  
Pressure: 300 PSI/ 0.98 MPa | Temperature: -10°C - 180°C



Flanged cast iron swing check valves  
Pressure: PN16 | Temperature: -20°C - 110°C



Flanged cast iron/stainless steel water type dual door check valves  
Pressure: PN16/PN25 | Temperature: -40°C - 180°C



Flanged cast iron spring check valves  
Pressure: PN16/PN25 | Temperature: -20°C - 110°C



Steel/cast iron hammerless check valves  
Pressure: 0.98 MPa | Temperature: 5°C - 60°C



## Y-STRAINERS



Threaded bronze/stainless steel Y-strainers  
Pressure: PN25/ 0.98 MPa | Temperature: -10°C - 180°C



Flanged cast iron Y-strainers  
Pressure: PN16/PN25 | Temperature: -10°C - 120°C



Flanged steel Y-strainers  
Pressure: 1.98 MPa | Temperature: 220°C



Flanged stainless steel Y-strainers  
Pressure: 0.98 MPa | Temperature: 180°C

## FOOT VALVES



Flanged cast iron foot valves  
Pressure: PN16/PN25  
Temperature: -10°C - 120°C



Flanged stainless steel foot valves  
Pressure: 0.98 MPa  
Temperature: 120°C



Flanged cast iron foot valves  
Pressure: 0.98 MPa  
Temperature: 5°C - 60°C



Flanged stainless steel foot valves  
Pressure: 1 MPa  
Temperature: < 80°C



Brass thread-end foot valves  
Pressure: 1.6 MPa  
Temperature: < 80°C

## AUTOMATIC AIR VENT VALVES



Automatic brass air vent valves, thread-end  
Pressure: PN16



Automatic cast iron air vent valves, thread-end  
Pressure: PN16 | Temperature: -10°C - 120°C



Automatic cast iron air vent valves, flanged-end  
Pressure: PN16 | Temperature: -10°C - 120°C

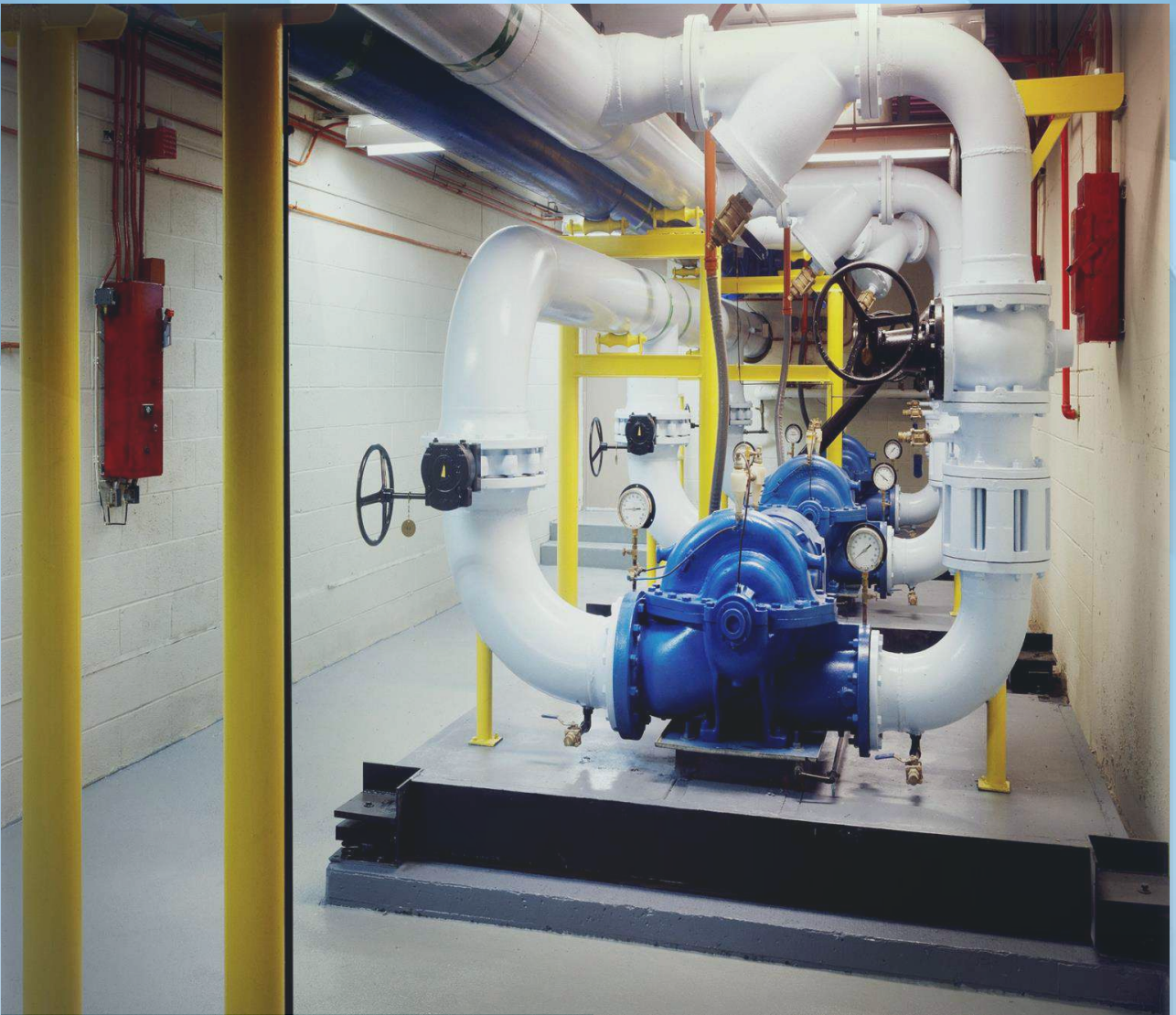


Automatic copper air vent valves, thread-end  
Pressure: 0.98 MPa | Temperature: 60°C



Automatic brass air vent valves, thread-end  
Pressure: PN10 | Temperature: -10°C - 120°C





# **PRESSURE REDUCING VALVES**

Tozen - Japan

Wonil - Korea

Samyang - Korea

Flamco - Netherlands

Inta – United Kingdom

PGTECH has a full range of high quality direct and indirect pressure reducing valves for water, steam, gas and liquid systems in general made in Europe, Japan, and Korea. The size range of pressure reducing valves is from threaded connections to flange connections and the materials are copper, stainless steel, cast iron with pressures from PN16, PN25, PN30 etc. We also have lines of pressure reducing valves with WRAS approval for drinking water and European standards that can withstand high temperatures of hot water and steam.



## WATER PRESSURE REDUCING VALVES



**Flanged cast iron hydraulic pressure reducing valves**

Pressure: PN16/25 | Temperature: -10°C ~ 80°C



**Threaded copper/stainless steel direct pressure reducing valves**

Pressure: PN16/25 | Temperature: -10°C ~ 80°C



**Threaded copper direct pressure reducing valves**

Pressure: PN16 | Maximum temperature: 80°C



**Threaded copper direct pressure reducing valves**

Pressure: PN25 | Maximum temperature: 80°C



**Flanged/ Threaded cast iron/stainless steel pressure reducing valves**

Pressure : 1.0MPa | Temperature: 5°C ~ 80°C



**Flanged cast iron hydraulic pressure reducing valves**

Pressure : 1.0MPa | Temperature: 5°C ~ 80°C

## STEAM PRESSURE REDUCING VALVES



**Flanged cast iron/stainless steel pressure reducing valves**

Pressure : 1.7MPa/3.0MPa | Temperature: <250°C



**Flanged cast iron pressure reducing valves**

Pressure : 1.0MPa | Temperature: <220°C



**Threaded cast iron pressure reducing valves**

Pressure : 1.0MPa | Temperature: <220°C



**Flanged cast iron pressure reducing valves**

Pressure : 2.0MPa | Temperature: 5°C ~ 80°C

## AIR PRESSURE REDUCING VALVES



**Flanged cast iron pressure reducing valves**

Pressure : 2.0MPa | Temperature: 5°C ~ 80°C



**Threaded cast iron pressure reducing valves**

Pressure : 1.0MPa | Temperature: <220°C





# **SAFETY VALVES**

**Tozen – Japan**

**Wonil – Korea**

**Samyang - Korea**

**Flamco - Netherlands**

PGTECH provides a full range of safety valves for water, steam, gas, and liquid from brands of the developed industrial countries of Japan, Europe, and Korea.

There are various options for safety valves, including brass, cast iron/ductile iron, high-temperature and high-pressure resistance, meeting the needs of various applications.

## WATER SAFETY VALVES



**Threaded brass safety valves**  
Maximum Pressure: 5Bar  
Temperature: -10°C ~ 120°C



**Threaded brass safety valves**  
Maximum Pressure : 10Bar  
Temperature:-10°C ~ 120°C



**Threaded brass thermostatic safety valves**  
Maximum Pressure : 7Bar  
Temperature:-10°C ~ 120°C



**Threaded brass safety valves  
(Used for Solar Energy system)**  
Maximum Pressure : 10Bar | Temperature: -30°C ~ 120°C



**Flanged ductile iron safety valves**  
Pressure : PN16/25 | Temperature: -10°C ~ 80°C



**Threaded cast iron safety valves**  
Maximum Pressure : 1.0MPa | Temperature: <80°C



**Flanged cast iron safety valves**  
Maximum Pressure : 1.0MPa  
Temperature: <80°C



**Flanged cast iron safety valves**  
Pressure : PN10 | Maximum temperature: 120°C

## STEAM SAFETY VALVES



**Threaded cast iron safety valves**  
Pressure : 1.0MPa | Temperature: <220°C



**Threaded cast iron safety valves**  
Pressure : 1.0MPa | Temperature: <220°C



**Flanged cast iron pressure reducing valves**  
Pressure : 1.0MPa | Temperature: <220°C



**Flanged cast iron pressure reducing valves**  
Pressure : 3.0MPa | Maximum temperature: 350°C

## AIR SAFETY VALVES



**Threaded cast iron safety valves**  
Pressure : 1.0MPa | Temperature: <220°C



**Threaded cast iron safety valves**  
Pressure : 1.0MPa | Temperature: <220°C



**Flanged cast iron pressure reducing valves**  
Pressure : 1.0MPa | Temperature: <220°C





# FLOAT VALVES

Tozen - Japan  
Samyang – Korea

PGTECH provides a full and diverse range of float valves including float valves, electric float valves which made of cast iron/ ductile iron, copper, and stainless-steel originating from Europe, Japan, and Korea.



## THREADED FLOAT VALVES



**Threaded brass float valves**

Dimensions: 3/8" ~ 4" | Body: Brass/Bronze | Float shaft: Copper/Stainless steel  
Ball: Plastic | Maximum Pressure: 6 Bar | Maximum temperature: 80oC (176oC)

## FLANGED FLOAT VALVES



**Flanged float valves**

Dimensions : DN50 ~ DN600 | Body : Ductile Iron | Shut-off/ Float shaft : Stainless steel  
Ball: Stainless steel | Pressure: PN16/PN25 | Maximum temperature: -10oC ~ 80oC

## ELECTRIC DUCTILE IRON FLOAT VALVES



**Flanged/ Threaded electric ductile iron float valves | Automatic water level control**

Dimensions : Thread connection 32A ~ 40A / Flange connection 50A ~ 300A | Body : Ductile iron (GC200)  
Has an integrated solenoid valve | Pressure: 1.0 MPa | Maximum temperature: 80oC

## ELECTRIC STAINLESS STEEL FLOAT VALVES



**Flanged/ Threaded electric stainless steel float valves | Automatic water level control**

Dimensions : Thread connection 32A ~ 40A / Flange connection 50A ~ 150A | Body : Stainless steel (STS)  
Has an integrated solenoid valve | Pressure: 1.0 MPa | Temperature: 5oC ~ 80oC



# **WATER HAMMER ARRESTERS**

**Tozen - Japan  
Samyang – Korea  
Flamco - Netherlands**

Various types of surge anticipator valves, threaded and flanged water hammers help ensure the operation performance of hydraulic systems and effectively prevent issues such as leakages, pipeline ruptures, which can pose risks to the system.



## MOOHA WATER HAMMER ARRESTERS



### Flanged Mooha water hammer arresters

Size: DN25 ~ DN150 | Body: Steel (SS400) | Pressure: PN16/25  
Rubber pressure absorption type

## STAINLESS STEEL WATER HAMMER ARRESTERS



### Flanged water hammer arresters cushion – Gas type

Size : 25A ~ 300A | Body : Steel/ Stainless steel | Type: Gas/Spring  
Maximum pressure: 0.98Mpa/1.96MPa | Temperature: 5oC ~ 80oC



### Flanged water hammer arresters cushion – Spring type

Size : 25A ~ 300A | Body : Steel/ Stainless steel | Type: Gas/Spring  
Maximum pressure: 0.98Mpa/1.96MPa | Temperature: 5oC ~ 80oC



## FLANGED WATER HAMMER ARRESTERS

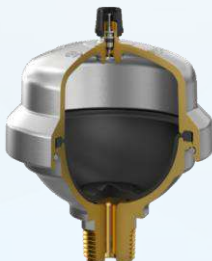


### Flanged hydraulic water hammer arresters

Size : DN50 ~ DN600 | Body/Cover: Ductile Iron | Spring: Stainless steel  
Diaphragm: Rubber (NBR/EPDM/HNBR/VITON) | Pressure: PN16/25 | Temperature : -10°C ~ 80°C



## THREADED WATER HAMMER ARRESTERS



### Threaded brass water hammer arresters

Size : 1/2" ~ 1-1/4" | Body : Brass | Butyl rubber diaphragm  
Volume: 160 cm<sup>3</sup> | Maximum pressure: 10.0 Bar | Maximum temperature: 90oC





# **VALVES FOR AIR/STEAM SYSTEMS**

**Tozen - Japan  
Samyang – Korea**

Industrial boilers and air compressor systems use valves and safety devices for steam systems. PGTECH provides a full range of valves and specialized control equipment for steam systems, including steam control valves, steam safety valves, steam pressure reducing valves, steam traps, steam water separation, Y-strainers, manual valves, thermal expansion joints, etc.

## STEAM TRAPS



**Flanged/Threaded cast iron steam traps**

Size: 15A ~ 50A | Body: Cast Iron (GCD450)

Maximum pressure: 1.4MPa (option) | Temperature: <220°C



**Threaded cast iron steam traps**

Size: 15A ~ 25A | Body: Cast Iron (GCD450)

Pressure: <1.7 MPa | Temperature: <220°C



**Threaded cast iron steam traps**

Size: 15A ~ 25A | Body: Cast Iron (GC200)

Pressure: 0.034~1.2MPa | Temperature: <220°C

## STEAM SAFETY VALVES



**Threaded cast iron safety valves**

Pressure: 1.0MPa | Temperature: <220°C



**Threaded cast iron safety valves**

Pressure: 1.0MPa | Temperature: <220°C



**Flanged cast iron safety valves**

Pressure: 1.0MPa  
Temperature: <220°C



**Flanged cast iron safety valves**

Pressure: 3.0MPa  
Maximum temperature: 350°C

## STEAM PRESSURE REDUCING VALVES



**Flanged cast iron pressure reducing valves**

Pressure: 2.0MPa | Temperature: 5°C ~ 80°C



**Flanged cast iron pressure reducing valves**

Pressure: 1.0MPa | Temperature: <220°C



**Threaded cast iron pressure reducing valves**

Pressure: 1.0MPa | Temperature: <220°C



**Flanged cast iron/steel pressure reducing valves**

Pressure: 1.7MPa/3.0MPa  
Temperature: <220°C / <250.

## CONDENSTATE WATER SEPARATORS



**Flanged steel water separators for steam system**

Size: 15A ~ 200A | Body: Steel (SPPS)

Maximum pressure: 2.0MPa | Temperature: <220°C



## BALL VALVES



**Threaded brass ball valves**

Size: DN15 ~ DN50 | Body: Bronze/Brass  
Pressure: PN42/PN28 | Temperature: -10°C ~ 180°C



**1 piece/3 pieces threaded stainless steel ball valves**

Size: 15A ~ 50A | Body: Stainless steel (SSC13/SSC14)  
Pressure : 0.98MPa | Maximum temperature: 80°C



**1 piece threaded stainless steel ball valves**

Size: 15A ~ 50  
Body Stainless steel (SSC13)  
Pressure : 1000 psi  
Temperature : 5°C ~ 120°C



**3-way/4-way Flanged stainless steel ball valves**

Size: 15A ~ 300A | Body : Stainless steel (SSC13)  
Pressure : 0.98 Mpa  
Maximum temperature : 120°C

## GLOBE VALVES



**Threaded copper globe valves**

Size: DN15 ~ DN50  
Body : Bronze  
Pressure : 300PSI  
Temperature : -10°C ~ 180°C



**Flanged cast iron globe valves**

Size: DN15 ~ DN300  
Body : Cast Iron  
Pressure : PN16  
Temperature : -10°C ~ 200°C



**Flanged/Threaded stainless steel globe valves**

Size: DN15 ~ DN300  
Body : Stainless Steel (SSC13)  
Pressure : 0.98MPa/1.96 Mpa  
Maximum temperature : 180°C



**Flanged/Threaded/Welded steel globe valves**

Size: 15A ~ 50A  
Body : Carbon Steel  
Pressure : 10K ~ 40K (optional)  
Maximum temperature : 450°C

## GATE VALVES



**Threaded stainless steel gate valve**

Size: 15A ~ 50A  
Body : Stainless steel (SSC13)  
Pressure : 0.98MPa  
Maximum temperature : 180°C



**Threaded steel gate valve**

Size: 50A ~ 300A  
Body : Steel (SCPH2)  
Pressure : 0.98MPa/1.96MPa  
Maximum temperature : 120°C/220°C



**Flanged stainless steel gate valve, rising/ non-rising stem**

Size: DN15 ~ DN300  
Body : Stainless steel (SSC13)  
Pressure : 0.98MPa  
Maximum temperature : 180°C



**Flanged/Threaded/Welded steel gate valve**

Size: 15A ~ 50A  
Body : Carbon Steel  
Pressure : 10K ~ 40K (optional)  
Maximum temperature : 450°C

## CHECK VALVES



**Threaded stainless steel check valves**

Size: 15A ~ 50A  
Body : Stainless steel (SSC13)  
Pressure : 0.98MPa  
Maximum temperature : 180°C



**Flanged steel check valves**

Size: 50A ~ 300A  
Body : Steel (SCPH2)  
Pressure : 0.98MPa/1.96MPa  
Maximum temperature : 120°C/220°C



**Flanged stainless steel check valves**

Size: 15A ~ 300A  
Body : Stainless steel (SSC13)  
Pressure : 0.98MPa  
Maximum temperature : 180°C

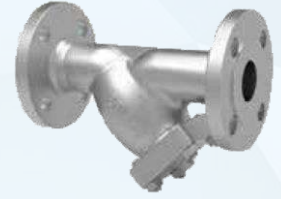


**Flanged/Threaded/Welded steel check valves**

Size: 15A ~ 50A  
Body : Carbon Steel  
Pressure : 10K ~ 40K (optional)  
Maximum temperature : 450°C



## Y-STRAINERS



### Threaded/Flanged cast iron Y-Strainers

Size: DN20 ~ DN450 | Body: Cast iron (GC200)  
Maximum pressure: 1.0 MPa | Temperature: <80°C

### Threaded/Flanged cast iron Y-Strainers

Size: DN15 ~ DN200 | Body: Cast iron (GC200)  
Maximum pressure: 1.0 MPa  
Temperature: <220°C

### Threaded/Flanged cast iron Y-Strainers

Size: DN15 ~ DN500 | Body: Cast iron (GCD450)  
Maximum pressure: 2.0 MPa  
Temperature: <220°C

## STRAINERS



### Flanged cast iron strainers

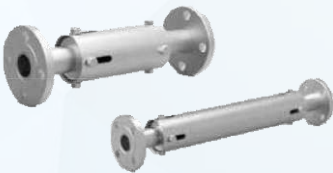
Size: DN20 ~ DN200 | Body: Cast iron (GC200)  
Maximum pressure: 1.0 MPa | Temperature: <120°C



### Threaded/flanged cast iron strainers

Size: DN50 ~ DN300 | Body: Cast iron (GC200)  
Maximum pressure: 1.0 MPa  
Maximum temperature: 220°C

## EXPANSION JOINTS



### Flanged stainless steel expansion joints

Size: DN25 ~ DN300 | Body: Stainless steel (STS)  
Maximum pressure: 1.0 MPa | Temperature: <220°C



### Flanged stainless steel expansion joints

Size: DN25 ~ DN300 | Body: Stainless steel (STS)  
Maximum pressure: 2.0 MPa | Temperature: <250°C



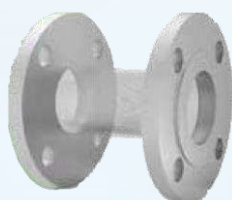
### Welded stainless steel expansion connector

Size: DN25 ~ DN200 | Body: Stainless steel (STS)  
Maximum pressure: 1.0 MPa | Temperature: <220°C



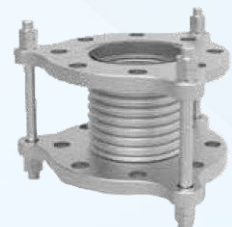
### Flanged stainless steel expansion joints

Size: DN40 ~ DN600 | Body: Stainless steel 304/316L  
Pressure: 10 ~ 25 Bar (optional)  
Maximum temperature: 250°C



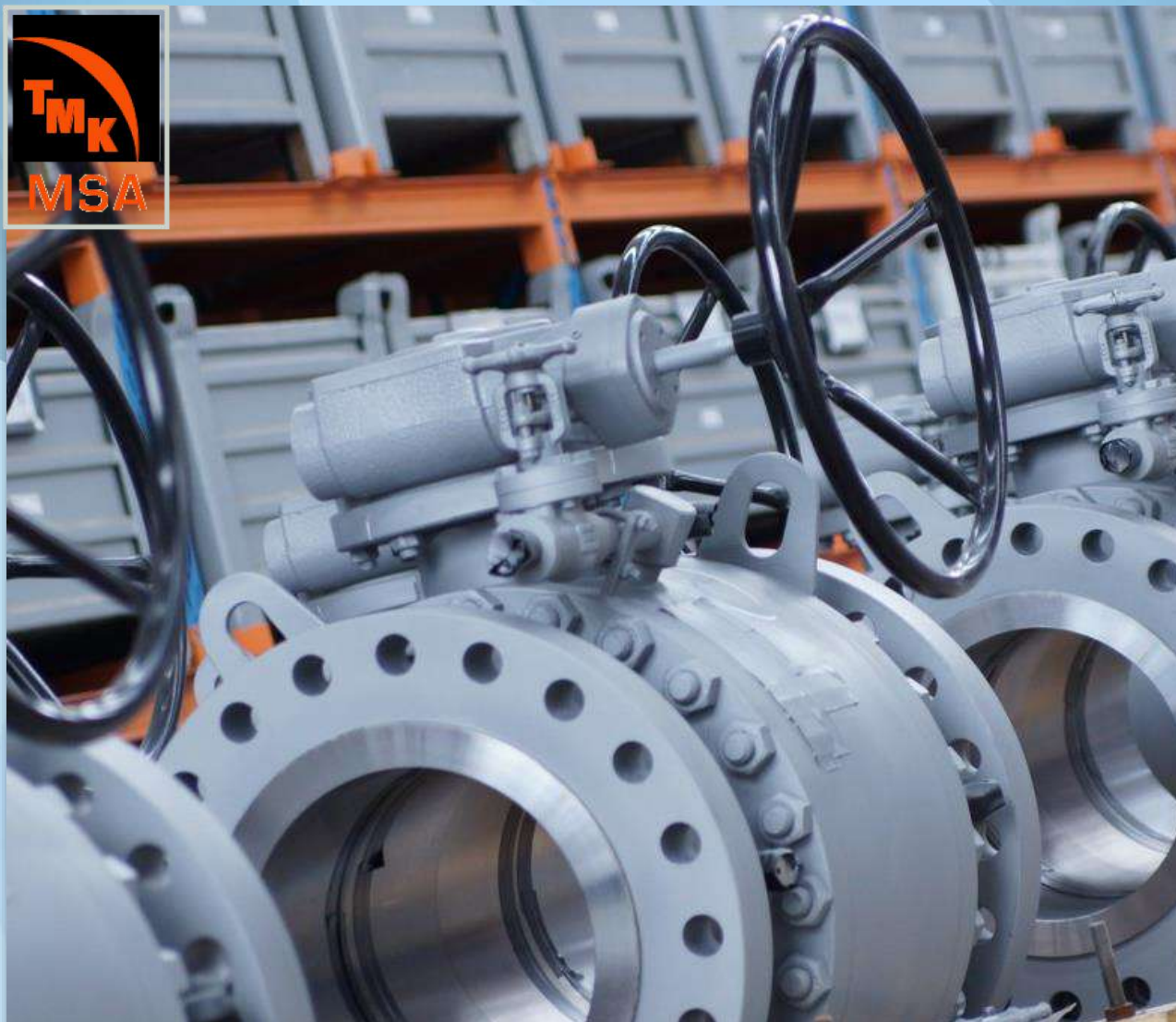
### Flanged stainless steel expansion joints

Size: DN25 ~ DN300 | Body: Stainless steel (STS)  
Pressure: 1.0 Mpa/2.0 MPa | Temperature: <220°C



### Flanged stainless steel expansion joints

Size: DN25 ~ DN400 | Body: Stainless steel (STS)  
Pressure: 1.0 Mpa/2.0 MPa  
Temperature: <220°C/< 250°C



# **INDUSTRIAL VALVES FOR OIL, GAS & LIQUID (API)**

**MSA – Czech Republic**

MSA - manufacturer of various types of industrial valves in Czech Republic, specializing in oil, gas, thermal and nuclear systems etc., have had a long history and manufacturing experience since 1885, with a variety of sizes, and materials.

All types of industrial valves of MSA have been certified with international standards including API, meeting the strict manufacturing requirements and efficient in low/high temperature according to specific applications. The gas system valves can be operating in the low temperature range from -195 degree Celsius to -50 degree Celsius and high temperature range from -50 degree Celsius to 550 degree Celsius, the high pressure from Class 150 to 2500



## VALVES FOR GAS



**Fully welded body ball valve, flanged/welded**  
 Size: DN15 – DN1400 | Body: Carbon Steel/  
 Alloy Steel/ Stainless Steel  
 Working pressure: PN16 – PN326  
 Working temperature: -50°C ~>200°C



**Top-entry soft sealed ball valve**  
 Size: DN15 – DN1400 | Body: Carbon Steel/  
 Alloy Steel/ Stainless Steel  
 Working pressure: PN16 – PN326  
 Working temperature: -50°C ~>200°C



**Double block and bleed valve**  
 Size: DN15 – DN1400 | Body: Carbon Steel/  
 Alloy Steel/ Stainless Steel  
 Working pressure: PN16 – PN326  
 Working temperature: -50°C ~>200°C



**Bolted body ball valve, flanged/welded**  
 Size: DN15 – DN1400 | Body: Carbon Steel/  
 Alloy Steel/ Stainless Steel  
 Working pressure: PN16 – PN326  
 Working temperature: -50°C ~>200°C

## VALVES FOR GAS



**Top-entry cryogenic ball valve**  
 Size: DN15 – DN500 | Body: Carbon Steel/  
 Alloy Steel/ Stainless Steel  
 Working pressure: PN16 – PN326 |  
 Working temperature: -50°C ~>200°C



**Swing check valve**  
 Size: DN15 – DN1050 | Body: Carbon Steel/  
 Alloy Steel/ Stainless Steel  
 Working pressure: PN16 – PN326 |  
 Working temperature: -50°C ~>200°C



**Metal seated ball valves, welded/flanged**  
 Size: DN15 – DN1400 | Body: Carbon Steel/  
 Alloy Steel/ Stainless Steel  
 Working pressure: Class 150 - 2500 |  
 Working temperature: -50°C ~>550°C



**Top-entry metal seated ball valve**  
 Size: DN15 – DN1400 | Body: Carbon Steel/  
 Alloy Steel/ Stainless Steel  
 Working pressure: CLASS 150 - 2500 |  
 Working temperature: -50°C ~>550°C

## VALVES FOR LNG, GAS POWER AND THERMAL POWER



**Swing check valve with pressure seal bonnet**  
 Size: DN100 – DN300 | Body: Carbon Steel/ Austenite Steel  
 Maximum working pressure: 20Mpa  
 Working temperature: -50°C ~ +350°C



**Welded gate valve**  
 Size: DN50 – DN800  
 Body: Carbon Steel/ Austenite Steel  
 Maximum working pressure: 20Mpa  
 Maximum working temperature: +350°C



**Welded regulating butterfly valve**  
 Size: up to DN800  
 Body: Carbon Steel/ Austenite Steel  
 Working pressure: 11.0 MPa  
 Maximum working temperature: +350°C



**Welded swing check valve with remote indication of stop device position**  
 Size: DN80 – DN600  
 Body: Carbon Steel  
 Working pressure: 20 Mpa  
 Maximum working temperature: +350°C

## VALVES FOR NUCLEAR POWER



**Thread stainless steel check valve**  
 Size: 15A – 50A  
 Body: Stainless steel (SSC13)  
 Working pressure: 0.98MPa  
 Maximum working temperature: 180°C



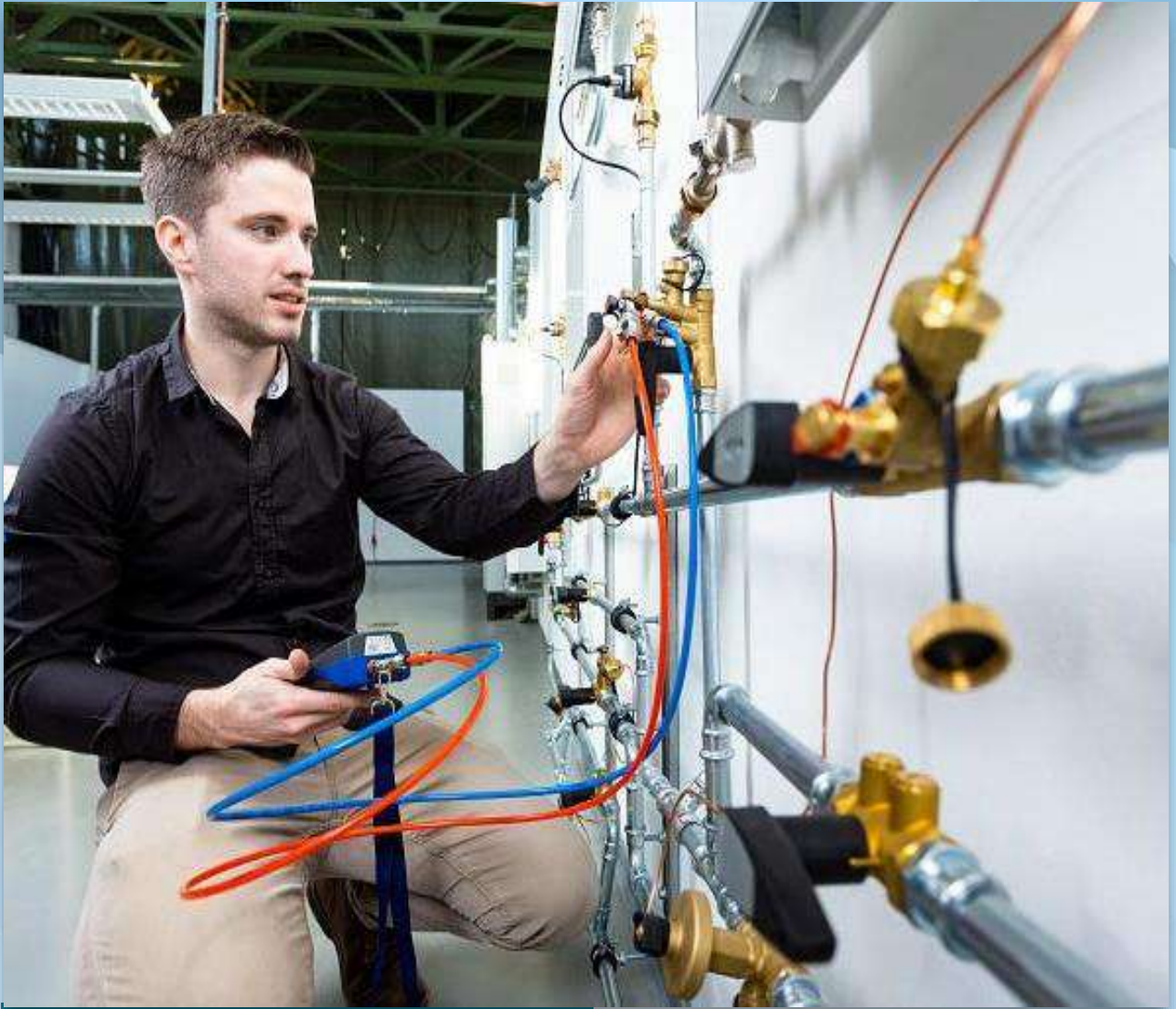
**Ball valve**  
 Size: 50A – 300A  
 Body: Steel (SCPH2)  
 Working pressure: 0.98MPa/1.96MPa  
 Maximum working temperature: 120°C/220°C



**Flanged/welded gate valve**  
 Size: 50A – 1200A  
 Body: Carbon steel/ Stainless steel/  
 Alloy steel  
 Working pressure: PN16 – PN100  
 Maximum working temperature: +538°C



**Flanged/welded globe valve**  
 Size: 50A – 600A  
 Body: Carbon Steel/ Stainless Steel/  
 Alloy Steel  
 Working pressure: Class 150 - 1500  
 Maximum working temperature: +538°C



# **BALANCING VALVES**

**Flamco - Netherlands**  
**Belimo – Switzerland**  
**Sunflu – Denmark**  
**Inta – United Kindom**

**PGTECH provides a full range of solutions for hydraulic balancing and HVAC systems; including manual balancing valves, automatic balancing valves, differential pressure balancing valves, pressure independent control valves (PICV), thermal balancing valves, from famous European brands.**



## MANUAL BALANCING VALVES



**Threaded manual balancing valves**  
 Size: DN15 ~ DN50 | Body: Bronze  
 Pressure: PN16/PN25 | Temperature: -10°C ~ 220°C



**Flanged cast iron manual balancing valves**  
 Size: DN50 ~ DN600 | Body: Cast iron  
 Pressure: PN16/PN25 | Temperature: -20°C ~ 120°C



## AUTOMATIC BALANCING VALVES



**Flanged automatic cast iron balancing valves**  
 Size: DN15 ~ DN40 | Body: Bronze  
 Pressure: PN16/PN25 | Temperature: 0°C ~ 110°C



**Automatic balancing valves with water connection**  
 Size: DN50 ~ DN500 | Body: Ductile cast iron  
 Pressure: PN16/PN25 | Temperature: 0°C ~ 110°C

## PRESSURE DIFFERENTIAL BALANCING VALVES



**Threaded bronze pressure differential balancing valves**  
 Size: DN15 ~ DN50 | Body: Brass / Cast iron  
 Pressure: PN16/PN25 | Temperature: -20°C ~ 120°C



**Flanged cast iron pressure differential balancing valves**  
 Size: DN40 ~ DN250 | Body: Cast iron  
 Pressure: PN16 | Temperature: -10°C ~ 120°C



## PRESSURE INDEPENDENT CONTROL VALVES (PICV)



**Threaded PICV**  
 Body: Brass | Control: Modulating/ On-Off  
 Pressure: PN25 | Temperature: -20°C ~ 120°C



**Flanged PICV**  
 Body: Cast iron | Control: Modulating/ On-Off  
 Pressure: PN16 | Temperature: 5°C ~ 120°C



**Flanged PICV**  
 Body: Brass / Cast iron | Connection: Threaded/Flanged  
 Pressure: PN25/PN40 | Control: Modulating/ On-Off/M-BUS/MOD-BUS | Fail-safe function | BacNet connection



## THERMAL BALANCING VALVES



**Brass threaded thermal balancing valves**  
 Size: DN15, DN20, DN25 | Body: Brass | Pressure: 10Bar/16Bar  
 Temperature range: 40°C ~ 65°C / 40°C ~ 50°C / 50°C ~ 60°C





# **CONTROL VALVES FOR WATER SYSTEMS**

**Belimo - Switzerland**

PGTech provides valve control solutions for water systems of HVAC systems, including various control types such as modulating, on/off, 3-points, and various sizes within the DN15-DN1200 range from the leading brands in the World.



## CHARACTERIZED BALL VALVES



### 2-way/3-way electrical control ball valves, threaded-end

Type: Normal/Fail-Safe control | Control: Modulating/ On-Off/3-point  
Body: Đồng mạ Nickel | Pressure: PN25/PN40 | Temperature: -10°C ~ 120°C

### 2-way/3-way electrical control ball valves, flanged-end

Type: Normal/Fail-Safe control | Control: Modulating/ On-Off/3-point  
Body: Cast iron | Pressure: PN16 | Temperature: -5°C ~ 100°C

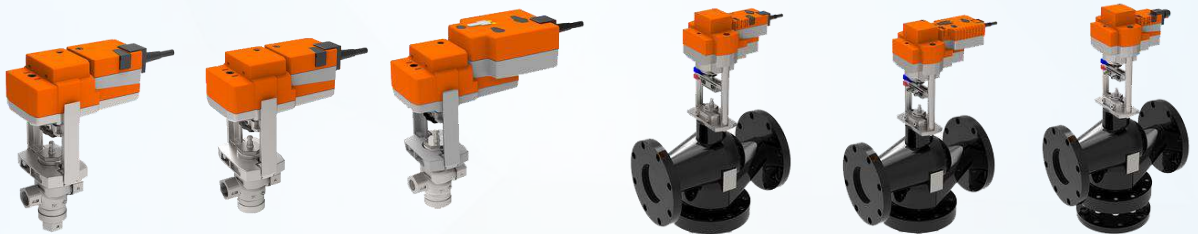
## MOTORIZED BUTTERFLY VALVES



### 2-way electrical control ball valves, flanged-end

Type: Normal/Fail-Safe | Control: Modulating/ On-Off/3-point/M-Bus/Mod-Bus  
Size: DN25 ~ DN1200 | Body: Cast iron | Pressure: PN16/PN25 | Temperature: -20°C ~ 120°C | Flanged-end: Wafer/Lug/Double flange type

## MOTORIZED GLOBE VALVES



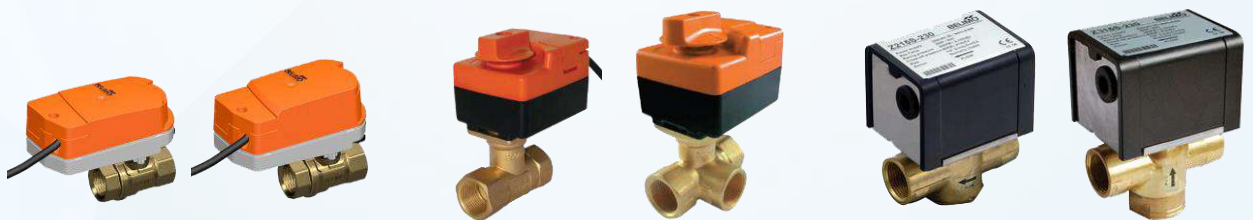
### 2-way/3-way electrical control globe valves, threaded-end

Type: Normal/Fail-Safe | Control: Modulating/ On-Off/3-point  
Body: Stainless steel | Pressure: PN25 | Temperature: 0°C ~ 130°C

### 2-way/3-way electrical control globe valves, flanged-end

Type: Normal/Fail-Safe | Control: Modulating/ On-Off/3-point  
Body: Cast iron | Pressure: PN16/PN25 | Temperature: 0°C ~ 150°C/ 0°C ~ 180°C

## ZONE VALVES/FCU



### Zone Valve | 2-way zone valves, threaded

Control: Modulating/ On-Off/3-point  
Body: Brass | Pressure: PN25 | Temperature: 2°C ~ 100°C

### Control valves for FCU

Control: On-Off/3-point | Body: Brass  
Pressure: 2000kPa | Temperature: 5°C ~ 100°C

### Control valves for Fan-coil/FCU

Fail-Safe type | Control: On-Off | Body: Brass  
Pressure: 2100kPa | Temperature: 0°C ~ 93°C



# **CONTROL VALVES FOR STEAM SYSTEMS**

**Belimo - Switzerland  
Samyang – Korea**

**PGTech provides control valve solutions for steam systems that work in high temperature environments for HVAC and heavy industry systems. In addition to specialized steam valves, valves required for heavy industry can withstand temperatures from -196°C to 565°C+.**



## GLOBE VALVES WITH ACTUATORS



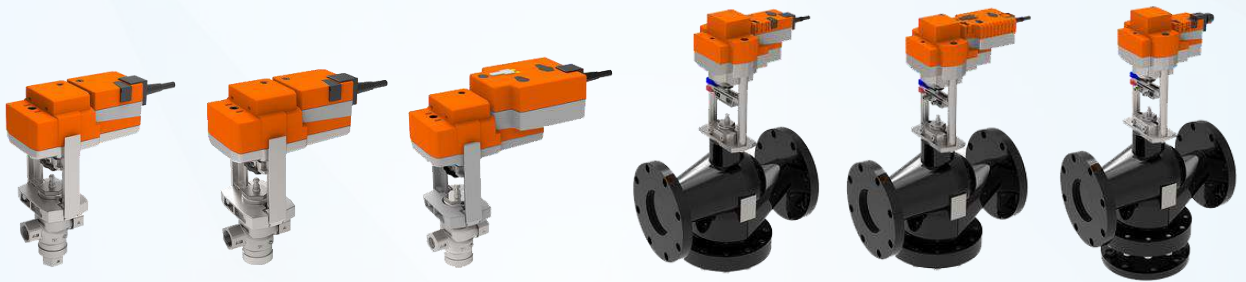
### 2-way/3-way Internal Thread Globe Valves with Actuator

Non Fail-Safe or Fail-Safe Actuator | Control Open-Close/ 3-point/Modulating  
Body: Stainless Steel | Working pressure: PN25 | Working temperature: 0°C ~ 130°C

### 2-way/3-way Flanged Globe Valves with Actuator

Non Fail-Safe or Fail-Safe Actuator | Control Open-Close/ 3-point/Modulating  
Body: Cast Iron | Working pressure: PN16/PN25 | Working temperature: 0°C ~ 150°C/ 0°C ~ 180°C

## GLOBE VALVES WITH ACTUATORS



### 2-way/3-way Internal Thread Globe Valves with Actuator

Non Fail-Safe or Fail-Safe Actuator | Control Open-Close/ 3-point/Modulating  
Body: Stainless Steel | Working pressure: PN25 | Working temperature: 0°C ~ 130°C

### 2-way/3-way Flanged Globe Valves with Actuator

Non Fail-Safe or Fail-Safe Actuator | Control Open-Close/ 3-point/Modulating  
Body: Cast Iron | Working pressure: PN16/PN25 | Working temperature: 0°C ~ 150°C/ 0°C ~ 180°C

## CONTROL VALVES FOR STEAM SYSTEMS



### Electrically Control Valves for Steam Systems | Belimo - Switzerland

Fail-Safe Type | Control Open-Close/Modulating | Size: DN15, DN25, DN40, DN50, DN65, DN80  
Body: Cast Iron | Working pressure: PN16 | Working temperature: 0°C ~ 175°C | Flanged connection



### Control Valves for Steam Systems | Samyang - Korea

Control Open-Close/Modulating | Size: 1" ~ 14" | Body: Steel | Working pressure: PN250 ~ PN420  
Working temperature: -196°C ~ 565°C\* | Flanged connection



# FLEXIBLE JOINTS

Tozen - Japan

PGTECH provides a complete solution of flexible joints, expansion joints and vibration isolation joints for clean water and sewage systems, steam, air, chemistry and vibration Isolation joints for clean water and sewage systems, steam, air, chemistry, etc.

TOZEN is one of the top manufacturers of expansion joints, and thermal expansion joints in Japan, providing diverse types of products and applications. The expansion joint of the brand TOZEN/Japan has been exported to many other countries in the world and used commonly in Vietnam.



## RUBBER FLEXIBLE JOINTS



### Single-Sphere Rubber Flexible Joints

Body: Synthetic rubber / EPDM / PVC | Size: DN15 ~ DN400  
Working pressure: PN10/PN16/PN25 | BS/JIS/ANSI Flanged Connection | BS21/NPT Thread Connection

### Twin-Sphere Rubber Flexible Joints

Body: Synthetic rubber / EPDM / PVC | Size: DN15 ~ DN600  
Working pressure: PN10/PN16/PN25 | BS/JIS/ANSI Flanged Connection | BS21/NPT Thread

### Rubber Drainage Joints

Body: Synthetic rubber | Working pressure: PN10  
Size: DN40 ~ DN200 | Clamp Connection

## STAINLESS STEEL FLEXIBLE JOINTS



### Flange Type Stainless Steel Flexible Joints

Body: SUS304 / SUS316L | Size: DN15 ~ DN300 | Max working temperature: 250°C  
Working pressure: PN10/PN16/PN25 | BS/JIS/ANSI Flanged Connection

### Thread Type Stainless Steel Flexible Joints

Body: SUS304 / SUS316L | Size: DN15 ~ DN50  
Max working temperature: 200°C | Working pressure: PN16/PN25

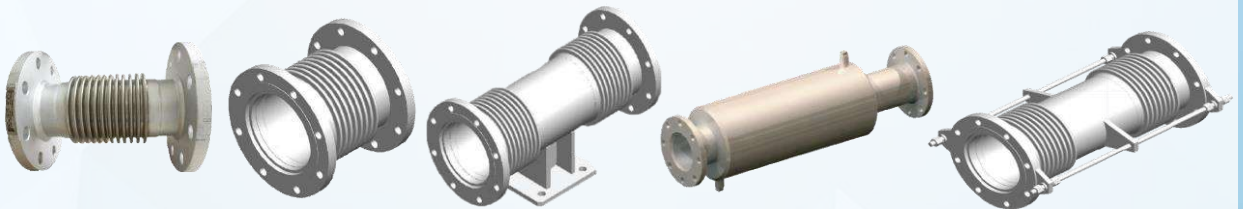
## RUBBER EXPANSION JOINTS



### Rubber Expansion Joints

Size: DN15 ~ DN1500 | Body: Synthetic rubber/ EPDM / PVC | Working pressure: PN10 / PN16 / PN25 (optional)  
Optional the quantity of bellows | Optional the different lengths of the joint according to each size | BS/JIS/ANSI Flanged Connection | Clamp connection

## STAINLESS STEEL EXPANSION JOINTS



### Stainless steel expansion joints

Size: DN40 ~ DN600 | Body: SUS304/316L | Working pressure: PN10 / PN16 / PN20 / PN25 (optional)  
Max working temperature: 250°C | BS / JIS / ANSI Flanged connection

## FLEXIBLE JOINTS FOR CHEMICAL LINES



### Flexible joint for chemical lines

Size: DN20 ~ DN300 | Body: Synthetic rubber / EPDM / PTFE / PVC | Working pressure: PN10 / PN16 / PN20 / PN25 (optional)  
Max working temperature: -20°C ~ 130°C | BS / JIS / ANSI Flanged connection



# VIBRATION ISOLATION SOLUTIONS

Tozen - Japan

All the vibration isolation solutions of Tozen/Japan have been used commonly for the the HVAC systems and industries that include different installation options such as floor mounting and hanging as well as different types of vibration isolators such as: Spring vibration isolators, rubber bush, rubber pad and joints...



## FLOOR MOUNTING SPRING VIBRATION ISOLATORS



### FLOOR MOUNTING SPRING VIBRATION ISOLATORS

Deflection: 25mm / 50mm / 75mm | Mounting cup: cast iron/steel | The spring elements was designed for semi-permanent use  
Available the resilient washer to prevent the transmission of noise and slipping  
The load capacity range meets the requirement of high vibration isolation and up to 5,600 Kgs

## SPRING VIBRATION ISOLATING HANGERS



### SPRING VIBRATIONS ISOLATING HANGER

Deflection: 25mm / 50mm | Hanger cup: Stainless steel | The spring elements was designed for semi-permanent use  
Available the resilient washer to prevent the transmission of noise | Loading capacity range meets the requirement of high vibration isolation and up to 5,600 Kgs

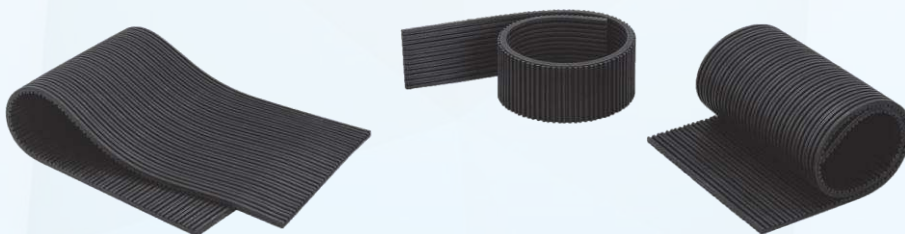
## RUBBER VIBRATION ISOLATORS



### RUBBER VIBRATION ISOLATORS

Optional hanger or floor mounting type | A variety of rubber parts to effectively prevent vibration and noise  
The load capacity range meets the requirement of high vibration isolation and up to 450 Kgs

## RUBBER PAD PT-MAT



### VIBRATION ISOLATING RUBBER PAD PT-MAT

Designed with the main material of rubber | Both sides of rubber pad were grooved to optimize vibration and noise  
Optional thickness: 10mm / 15mm / 20mm. Cut the pad with the suitable dimension to vibration isolation  
Easily installed anywhere needed to prevent vibration



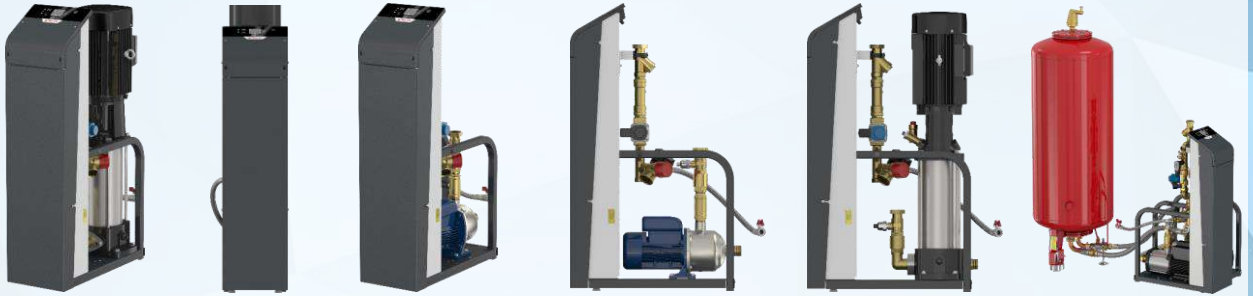
# SOLUTIONS FOR HVAC

Flamco - Netherlands

Flamco/Netherlands is one of the top manufacturers of the optimal solutions for HVAC system performance in the world including Pressurization & Degassing System, Vacuum Degassing System, Dirt & Air Separator, Hydraulic Control, Expansion Vessel, Buffer Vessel,... These solutions help to save energy, make the system safer, avoid breakdown, and reduce the maintenance and operating costs.

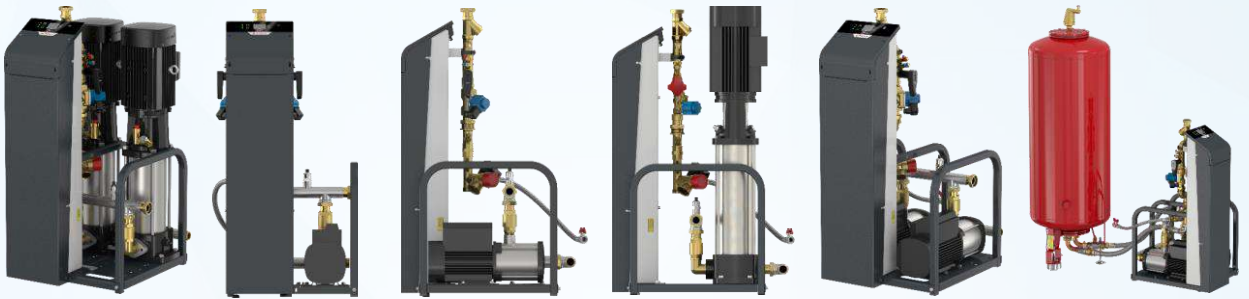


## PRESSURISATION SYSTEMS & DEGASSING SYSTEMS



### PRESSURISATION & DEGASSING SYSTEMS FOR HEATING AND COOLING (CHILLER) SYSTEMS

The solution is used to pressurize and degas for the HVAC system(Heating/Cooling) | The system is controlled by a pump  
1- pump type | Max working pressure: PN6 / PN10 / PN16 | Working temperature: 3°C ~ 70°C



### PRESSURISATION & DEGASSING SYSTEMS FOR HEATING AND COOLING (CHILLER) SYSTEMS

The solution is used to pressurize and degas for the HVAC system(Heating/Cooling) | The system is controlled by a pump  
2- pumps type | Max working pressure: PN6 / PN10 / PN16 | Working temperature: 3°C ~ 70°C

## VACUUM DEGASSING SYSTEMS



### VACUUM DEGASSING SYSTEMS VACUMAT ECO

Negative pressure vacuum degasser helps remove gas quickly, limit damage to the system, avoid unnecessary errors, equipment wear and tear, costly repairs, and extend the lifespan of the system | Controlled by pump and sensor | Max working pressure: PN10 / PN16 | Working temperature: 3°C ~ 120°C



### ENA VACUUM DEGASSING SYSTEMS

Helping actively degassing, automatically enhancing closed heating and cooling system | Controlled by pump and sensor  
Using vacuum for highly effective degassing in closed systems | Max working pressure: PN8 / PN10 / PN16 | Working temperature: 3°C ~ 70°C

# PRESSURISATION & VACUUM DEGASSING SOLUTIONS



## PRESSURISATION & VACUUM DEGASSING SOLUTIONS

**PSD Series** – A compact, fully self-contained vacuum degassing unit used for closed system to effectively provide dissolved gas removal



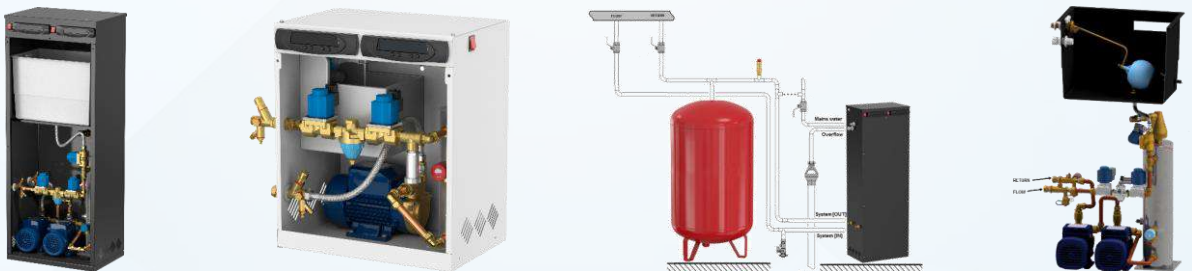
## PRESSURISATION & VACUUM DEGASSING SOLUTIONS

**Pro PDG Series** – Used for closed systems to provide requirements of minimum system pressure and effectively remove dissolved gas



## PRESSURISATION & VACUUM DEGASSING SOLUTIONS

**Pro PDD Series** – Used for closed systems to provide requirements of minimum system pressure and effectively remove dissolved gas



## PRESSURISATION & VACUUM DEGASSING SOLUTIONS

**Flexfiller Plus & Midifill Plus Series** – Providing requirements of minimum system pressure and effectively removing dissolved gas



## PRESSURISATION & VACUUM DEGASSING SOLUTIONS

**PressDS Plus Series** – Used for closed systems to provide requirements of minimum system pressure, effectively remove dissolved gas, and add additives to the system

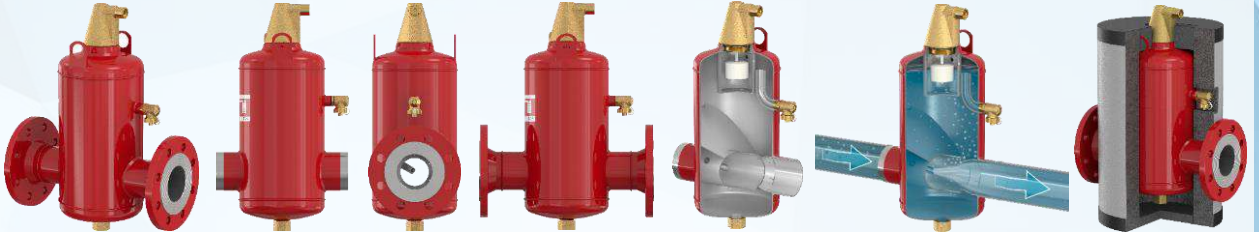


## AIR SEPARATORS



### AIR SEPARATOR FOR WATER SYSTEM - SCREWED

Helping completely remove air from the Heating/Boiler & Cooling/Chiller system | Body: Brass | Working pressure: PN10 | Size: 22mm / DN20 ~ DN50



### AIR SEPARATOR FOR WATER SYSTEM - FLANGED/WELDING CONNECTION

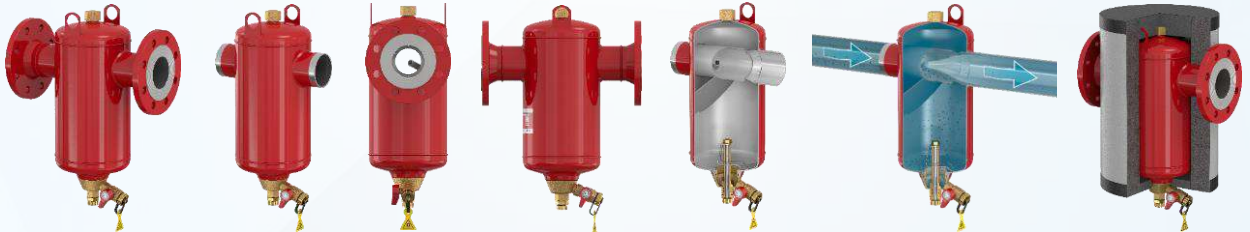
Helping completely remove air from the Heating/Boiler & Cooling/Chiller system | Body: Cast Iron | Working pressure: PN10/PN16/PN25 | Size: DN50 ~ DN600 | Capacity: 8 liters ~ 2390 liters

## DIRT SEPARATORS



### DIRT SEPARATOR FOR WATER SYSTEM - SCREWED

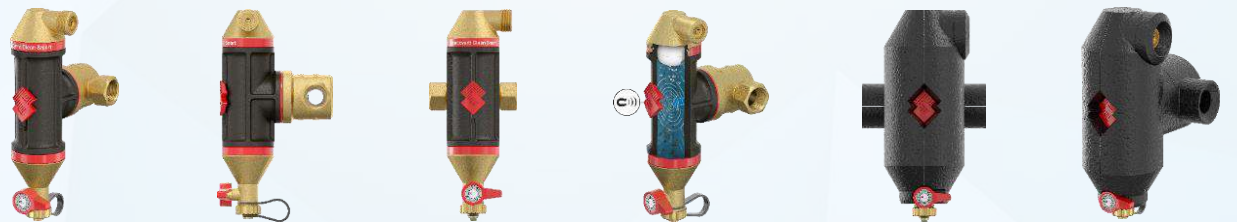
Used for closed heating and cooling systems | Body: Brass | Working pressure: PN10 | Size: DN20 ~ DN50



### DIRT SEPARATOR FOR WATER SYSTEM - FLANGED/WELDING CONNECTION

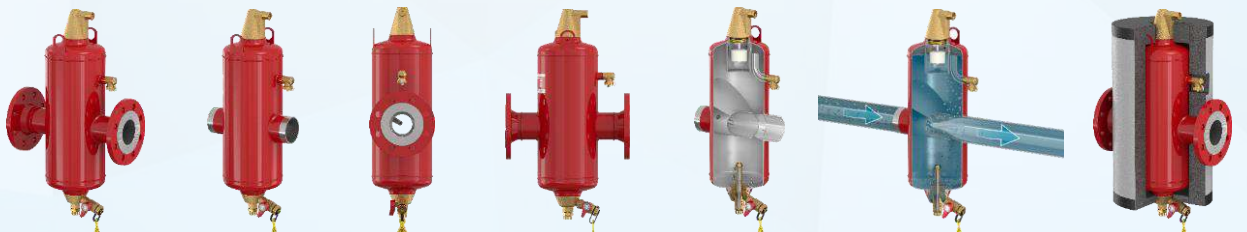
Used for closed heating and cooling systems | Body: Cast Iron | Working pressure: PN10/PN16/PN25 | Size: DN50 ~ DN600 | Capacity: 8 liters ~ 2390 liters

## DIRT & AIR SEPARATORS



### DIRT & AIR SEPARATOR FOR WATER SYSTEM - SCREWED

Helping completely remove air from heating and cooling systems | Body: Brass | Working pressure: PN10 | Size: DN20 ~ DN50



### DIRT & AIR SEPARATOR FOR WATER SYSTEM - FLANGED/WELDING CONNECTION

Used for closed heating and cooling systems | Body: Cast Iron | Working pressure: PN10/PN16/PN25 | Size: DN50 ~ DN600 | Capacity: 8 liters ~ 3056 liters



**Flamco**



## **EXPANSION VESSELS**

**Flamco - Netherlands**

Flamco/Netherlands is one of the largest manufacturers of expansion vessels in the world, providing full of expansion vessel and pressure vessel solutions for HVAC, Water Supply and Drainage, Fire Fighting System with the variety of capacity from 2 liters to 10,000 liters.

The solutions of traditional and smart automatic expansion vessel (BMS communication and compressor included) with high technology, long lifespan, and genuine long-term warranty from the manufacturer.



## EXPANSION VESSELS FOR DRINKING WATER



**EXPANSION VESSEL FOR DRINKING WATER (DOMESTIC WATER & HVAC)**

The expansion vessel with the high quality is used for water fluid, including drinking water | Body: Steel | Working pressure: PN10/PN16/PN25 | Capacity: 2 liters ~ 5000 liters

## AUTOMATIC EXPANSION VESSELS



**AUTOMATIC EXPANSION VESSELS FOR HVAC SYSTEM**

Used to optimize operating performance, reduce installation volume and space, automatically pressurize and connect BMS communications  
Body: Steel | Working pressure: PN10/PN16/PN25 | Capacity: 8 liters ~ 3056 liters

## OTHER EXPANSION VESSELS



**EXPANSION VESSELS FOR HEATING/BOILER, COOLING/CHILLER AND SOLAR ENERGY SYSTEMS**

Used to optimize the Chiller, Boiler, and Solar Energy Systems | Body: Steel | Working pressure: PN10/PN16/PN25 | Capacity: 2 liters ~ 10,000 liters



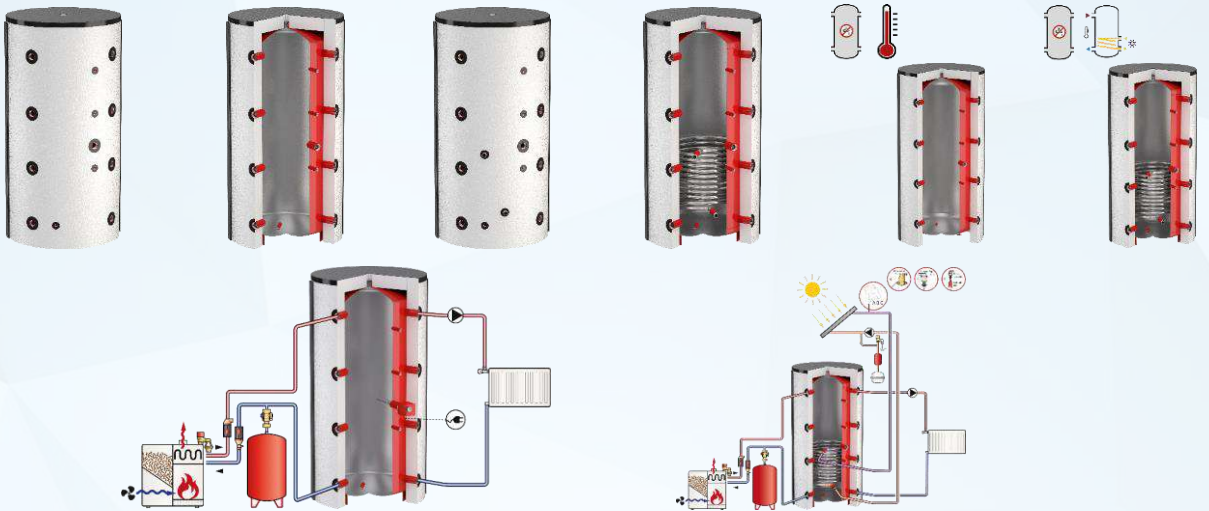
## **BUFFER VESSELS/TANKS**

**Flamco - Netherlands**

Flamco/Netherlands provides full of buffer vessel solutions with high quality, used effectively for the Heating (Boiler) and Cooling (Chiller) system in HVAC System. The buffet vessels of Flamco are amodern solutions for the HVAC system, help save energy effectively, and enhance the operatation performance of the system. Working pressure designed for your requirements, high quality material of steel, advanced thermal insulation,... are preeminent characteristics of Flamco Buffer Vessels.



## HEATING BUFFER VESSELS



**BUFFER VESSELS FOR HEATING/BOILER SYSTEMS**

Used for closed heating systems | Including a heating coil for connecting additional heating sources | Body: Steel | Working pressure: PN10/PN16/PN25 | Capacity: 200 liters – 5000 liters

## COOLING BUFFER VESSELS



**BUFFER VESSELS FOR COOLING/CHILLER SYSTEMS**

Used for closed cooling systems | Body: Steel | Working pressure: PN10/PN16/PN25 | Capacity: 500 liter – 3000 liter

## STORAGE VESSELS FOR DRINKING WATER



**STORAGE VESSELS FOR DRINKING WATER**

Used for systems in which heat can be exchanged by external heat exchangers | Body: Steel | Working pressure: PN10/PN16/PN25 | Capacity: 300 liters – 1000 liters



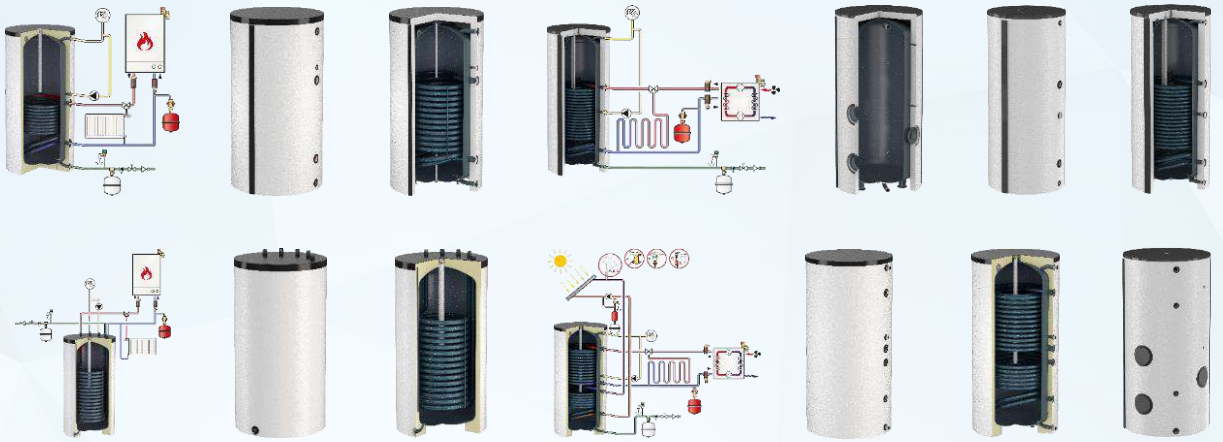
# **WATER HEATERS**

**Flamco - Netherlands**

**PGTECH provides a wide range of water heater solutions with variety of capacity from 110 liters to 3000 liters, and different types of materials such as high-quality specialized steel, stainless steel, glass to avoid corrosion and extend the lifespan, absolutely safe for users as well as retain heat well.**



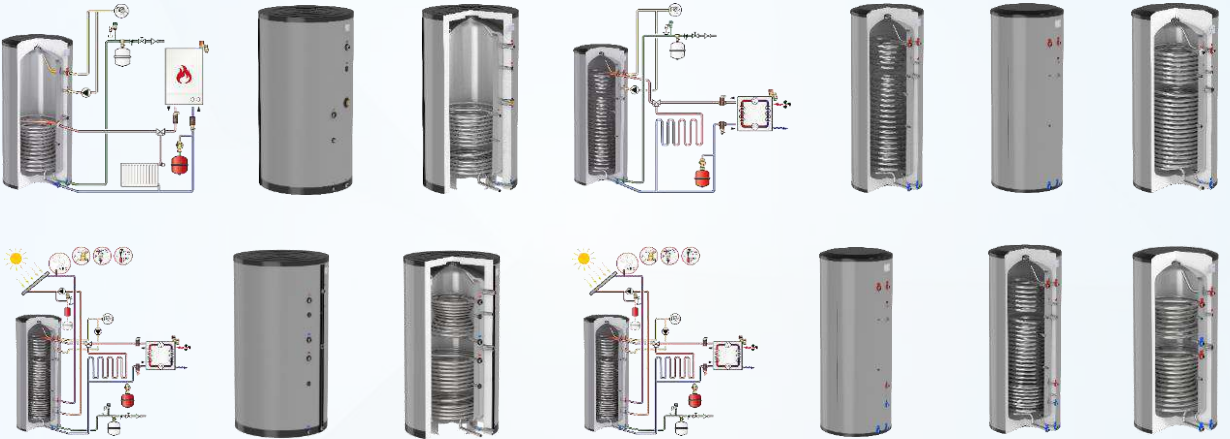
## GLASS COATED WATER HEATERS



### HIGH-QUALITY GLASS COATED WATER HEATERS

Combining with heat pumps | For use in the heating and hot water system, solar energy system  
Including insulation | Working pressure: PN10/PN16/PN25 | Capacity: 120 liters ~ 3000 liters

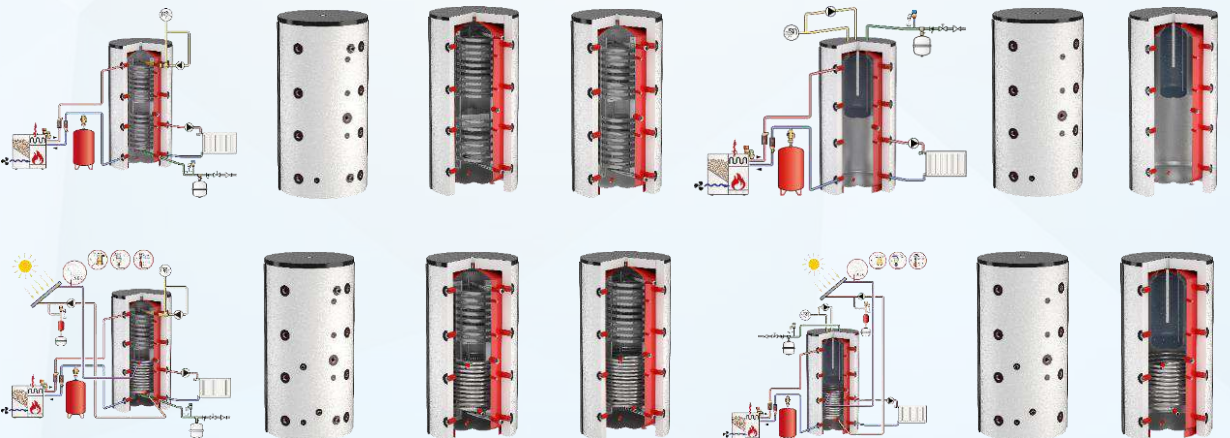
## STAINLESS STEEL WATER HEATERS



### HIGH-QUALITY STAINLESS STEEL WATER HEATERS

Combining with heat pumps | For use in the heating and hot water system, solar energy system  
Including insulation | Working pressure: PN10/PN16/PN25 | Capacity: 120 liters ~ 3000 liters

## STEEL WATER HEATERS



### HIGH-QUALITY STEEL WATER HEATERS

Combining with heat pumps | For use in the heating and hot water system, solar energy system  
Including insulation | Working pressure: PN10/PN16/PN25 | Capacity: 120 liters ~ 3000 liters



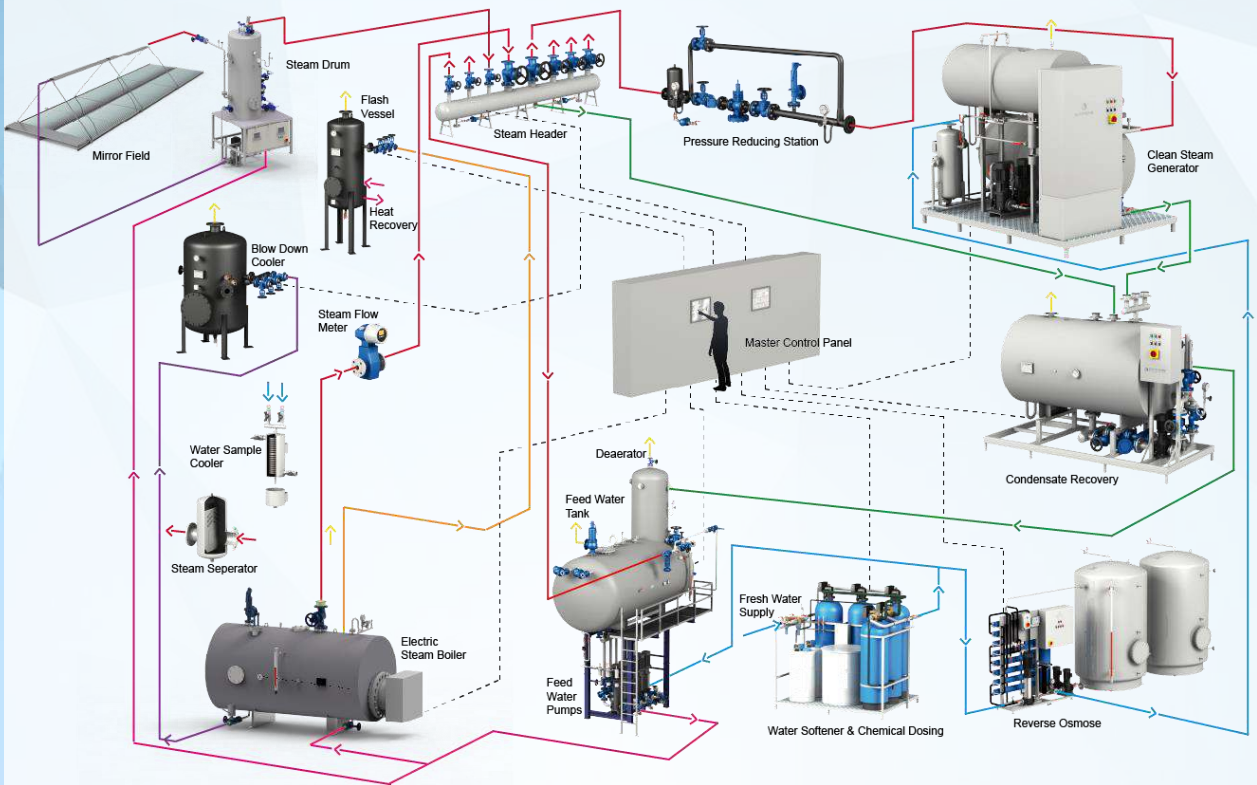
## **SOLUTIONS FOR HEATING SYSTEMS (WATER HEATERS, PRESSURIZED STORAGE TANKS, BOILERS...)**

**Ecotherm – Austria**

Ecotherm - a long history corporation since 1880 in Austria, with various solutions for HVAC, steam, and solar systems, is popular for water heaters, heating storage tanks, electric boilers, gas and oil boilers, heating exchanger, etc. Ecotherm's water heaters, heat storage tanks are made of high-quality stainless steel 316, with capacity of up to 30.000 liters, have patented solutions that help increase heat capacity, reduce tank volume and save space by up to 95%, reduce energy and maintenance costs effectively.

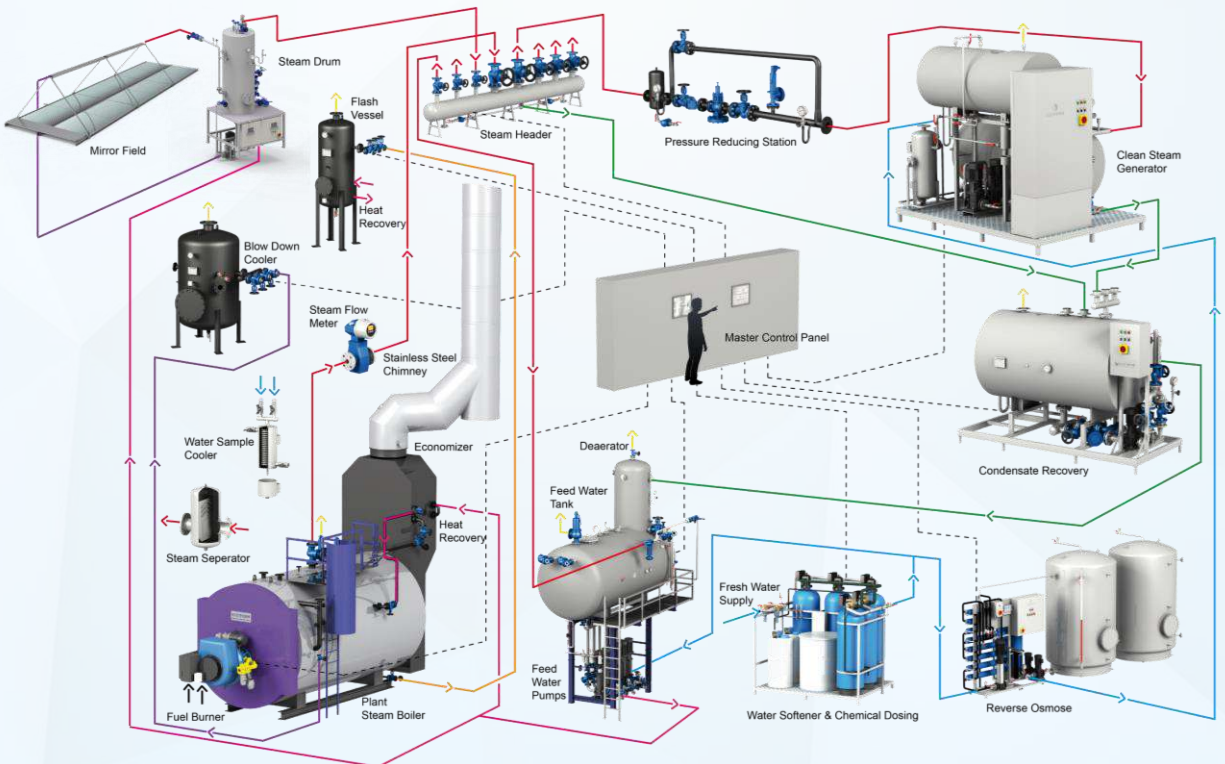


# ECOTHERM SOLAR STEAM SOLUTIONS



## ECOTHERM® Turnkey Electric Steam Boiler Solutions (Optional with a ECOTHERM® Solar Steam System)

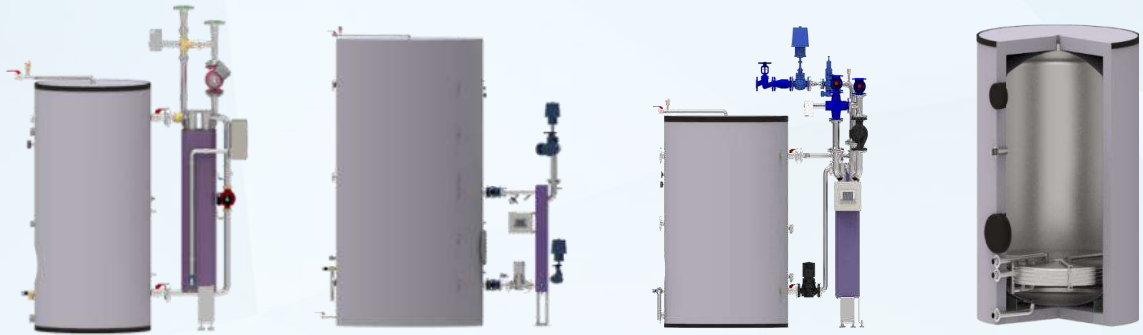
For hotels, resorts, hospitals, factories (pharmaceutical, food and beverage, etc.) and the industry



## ECOTHERM® Turnkey Clean Steam Solutions (Optional with a ECOTHERM® Solar Steam System)

For hotels, resorts, hospitals, factories (pharmaceutical, food and beverage, etc.) and the industry

## ECOTHERM HIGH-CAPACITY WATER HEATERS



**HIGH-CAPACITY WATER HEATERS WITH EXTERNAL SHELL, TUBE HEAT EXCHANGER & INTERNAL SPIRAL FLAT HEATING COIL  
(USE FOR WATER/STEAM BOILERS, HEAT PUMPS)**

Power Capacity 50kW – 2000kW | Heat auto – exchanger using patented controller  
Capacity 300L ~ 20.000L | Body material: High-quality Stainless steel 316



**DIRECT/INDIRECT FIRED WATER HEATER (WITH COMPACT GAS CONDENSING BOILER)**

Direct heating tank use a compact gas condensing boiler | Indirect heating tank uses the heat exchanger suitable for hard water  
Direct heating tank uses the ceramic heating component | Direct heating tank uses the incology heating component  
Capacity 300L ~ 10.000L | Body material: High-quality Stainless steel 316

## ECOTHERM STORAGE TANKS



**STORAGE WATER HEATER WITH INTEGRATED FLAT COIL HEAT EXCHANGER | STORAGE WATER HEATER | UNIVERSAL WATER HEATER**

Pressurized thermal storage tank | Pressurized thermal storage tank with the Stainless steel heating coil  
Capacity 200L ~ 20.000L | Body material: High-quality Stainless steel 316 | Maximum dynamic pressure: 10 bar



## ECOTHERM ELECTRIC BOILERS



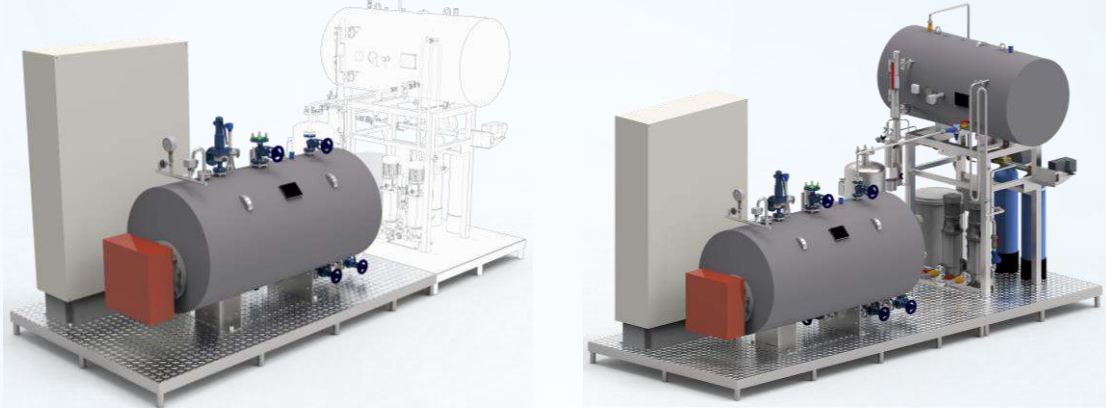
### ELECTRIC HOT WATER BOILERS (WITH ELECTRIC HEATING ELEMENTS OR HEATING FLANGE)

There is a heating component | Power Capacity: Max 30 MW

Mounted on skid plate and pre-assembled | Electric boiler shell made of stainless steel or mild steel

Used for heating system and produce the domestic hot water | There is an intuitive control panel, BMS connection

Working pressure: 6 bar, 10 bar, 16 bar or above | EU Standard: PED 2014/68/EC or ASME Sect. VIII Div. 1



### ELECTRIC STEAM BOILERS

Capacity: 250kg/h – 20.000kg/h | Pressure: up to 16bar | Mounted on skid plate and pre-assembled | Provide pipes and connecting wires . An intuitive control panel, BMS connection, EU Standard: PED 2014/68/EC or ASME Sect. VIII 1.

Body material: Steel P235GH or Stainless steel 304 or 316. Working pressure: 6 bar, 10 bar, 16 bar or above

## ECOTHERM MAGNETIC DYNAMIC SEPARATORS



### ECOTHERM MAGNETIC-DYNAMIC SEPARATOR

The product range covers throughput ranges from 1 m<sup>3</sup>/h to 235 m<sup>3</sup>/h and more. Flushing of new equipment is not required. After switching on the water circuit, mobilized impurities are quickly and effectively separated.

Correction of the pH value. The water quality according to guideline VDI 2035 is achieved within a short time



# **FIREFIGHTING VALVES & EQUIPMENTS**

**Fesco/Paratech  
(Korea)**

PGTECH provides variety of fire fighting equipment, meeting the standard of UL/FM of USA, KFI of Korea.

Fesco/Paratech (Korea) is one of the top manufacturers of firefighting equipment in Korea and the top 5 of the firefighting equipment manufacturers of the world. Established in 1973, Fesco/Paratech achieved the prestige certificate UL/FM for Valves for Firefighting, Sprinkler Flexible Hoses, Spinklers, etc.



## UL/FM – KFI ALARM VALVES



**Flanged Alarm Check Valves**

UL/FM Product | Size: DN100 ~ DN200

Body: Ductile Iron | Working pressure: 175 PSI/250 PSI/300 PSI



**Grooved Alarm Check Valves**

UL/FM Product | Size: DN100 ~ DN200

Body: Ductile Iron | Working pressure: 175 PSI/250 PSI/300 PSI



**Flanged Alarm Valves - Retard Chamber Type**

KFI Product | Size: DN100, DN150

Body: Ductile Iron | Max working pressure: 1.4 MPa



**Flanged Alarm Valves – Alarm Switch Type**

KFI Product | Size: DN65 ~ DN150

Body: Ductile Iron | Working pressure: 1.4 Mpa | Standard Type



**Flanged Alarm Valves – Alarm Switch Type**

KFI Product | Size: DN65 ~ DN150

Body: Ductile Iron | Working pressure: 1.4 Mpa | Combine Type



**Grooved Alarm Valves – Alarm Switch Type**

KFI Product | Size: DN65 ~ DN150

Body: Ductile Iron | Working pressure: 1.4 Mpa

## UL/FM – KFI DELUGE VALVES



**Flanged Deluge Valves**

UL/FM Product | Size: DN100, DN150

Body: Cast Iron | Max working pressure: 175 PSI



**Flanged Pre-Action & Deluge Valves**

KFI Product | Size: DN80 ~ DN150

Body: Cast Iron | Max working pressure: 1.4 Mpa/2.2 MPa



**Grooved Pre-Action & Deluge Valves**

KFI Product | Size: DN80 ~ DN150

Body: Cast Iron | Max working pressure: 1.4 Mpa/2.2 MPa



**Flanged Double Interlock Valves**

KFI Product | Size: DN150

Body: Cast Iron | Max working pressure: 1.4 MPa



**Flanged Dry Pipe Valves**

KFI Product | Size: DN100, DN150

Body: Cast Iron | Max working pressure: 1.4 MPa



**Pre-Action & Deluge Valves**

KFI, UL, FM Product | Size: DN100, DN150

Body: Cast Iron | Max working pressure: 175 PSI

## GATE VALVES UL/FM



Tamper Switch

### Resilient OS&Y Gate Valves

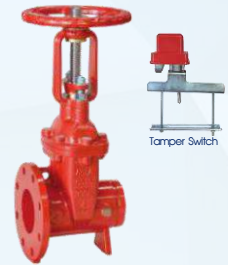
UL/FM Product | Including tamper switch (optional) | Body: Ductile Iron  
Size: DN50 - DN600 | Working pressure: 300 PSI | Flange type



Tamper Switch

### Resilient OS&Y Gate Valves

UL/FM Product | Including tamper switch (optional) | Body: Ductile Iron  
Size: DN50 - DN600 | Working pressure: 300 PSI | Grooved type



Tamper Switch

### Resilient OS&Y Gate Valves

UL/FM Product | Including tamper switch (optional) | Body: Ductile Iron  
Size: DN50 - DN600 | Working pressure: 300 PSI | Flange & Grooved type



### Flanged Resilient NRS Gate Valves

UL/FM Product | Size: DN50 - DN600  
Body: Ductile Iron | Disc: Ductile Iron | Working pressure: 300 PSI



### Grooved Resilient NRS Gate Valves

UL/FM Product | Size: DN50 - DN600  
Body: Cast Iron | Disc: Ductile Iron | Working pressure: 300 PSI



## BUTTERFLY VALVES UL/FM



### Flanged Resilient Butterfly Valves

- UL/FM Product
- Including tamper switch (optional)
- Size: DN50 - DN300
- Body: Ductile Iron
- Disc: Ductile Iron
- Working pressure: 300 PSI
- Wafer type



### Grooved Resilient Butterfly Valves

- UL/FM Product
- Including tamper switch (optional)
- Size: DN50 - DN300
- Body: Ductile Iron
- Disc: Ductile Iron
- Working pressure: 300 PSI
- Grooved type



### Flanged Resilient Butterfly Valves

- UL/FM Product
- Including tamper switch (optional)
- Size: DN50 - DN300
- Body: Ductile Iron
- Disc: Ductile Iron
- Working pressure: 300 PSI
- Lugged type

## CHECK VALVES UL/FM



### Flanged Check Valves

UL/FM Product | Size: DN50 - DN300  
Body: Ductile Iron | Disc: Ductile Iron | Working pressure: 300 PSI



### Grooved Check Valves

UL/FM Product | Size: DN50 - DN300  
Body: Ductile Iron | Disc: Ductile Iron | Working pressure: 300 PSI



## Y STRAINERS UL/FM



### Flanged Strainers

UL/FM Product | Size: DN50 - DN300  
Body: Ductile Iron | Filter: Stainless Steel | Working pressure: 300 PSI



### Grooved Strainers

UL/FM Product | Size: DN50 - DN300  
Body: Ductile Iron | Filter: Stainless Steel | Working pressure: 300 PSI



## SPRINKLER HEADS UL/FM

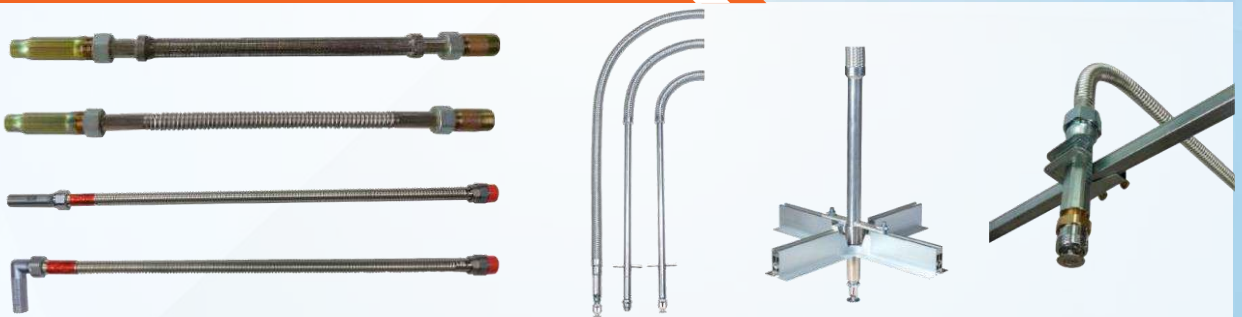


### Sprinkler heads for firefighting systems

Glass bulb Sprinklers / Flush Sprinklers / Drencher Sprinklers / Air Foam Sprinklers/ Antifreeze Sprinklers

Pendent / Upright / Side-wall | Material: Brass / Chrome plated/ Stainless steel/ Teflon coating | NPT or BSPT thread (optional)  
UL/FM or KFI Product (optional) | K = 5.6 / 8.0 / 11.2 / 80... (optional) | Temperature: t = 57°C / 68°C / 79°C / 93°C / 141°C (optional)

## SPRINKLER FLEXIBLE HOSES UL/FM



### Sprinkler Flexible Hoses for Firefighting Systems

UL/FM or KFI or LPCB Product (optional) | Unbraided type: Stainless steel 304 / Stainless steel 316 | Braided type (optional): Stainless steel | Thread connection: Ø25 or Ø28 or 1/2" or 3/4" (optional) Length: 700mm ~ 3100mm | Including full accessories to install the hose to the system

## OTHERS



Indicator Post

Sight Glasses

Indoor Fire

Relief Valves

Zone Control & Riser System  
Z1 Series

Fixed Foam Monitor for Air Foam System



## **MEASURING DEVICES**

**Cidong – Korea**

**PA – Germany**

**Tozen - Japan**

**Onicon - USA**

**Flamco - Netherlands**

PGTECH provides full measurement solutions with high-quality such as flow meters (manual, electromagnetic, ultrasonic), BTU meters, thermometers, and pressure gauges approved EU & USA standards. These products are manufactured by prestige brands, used commonly around the world, got the high accuracy to serve the best to projects.



## MANUAL WATER METERS



### MANUAL WATER METERS

Using rotary turbine and counter to display measurement parameters | Size: DN15 ~ DN600 | Working pressure: PN10/PN16 | Connection: Flanged or Threaded

## SMART/ELECTROMAGNETIC FLOW METERS



### SMART WATER METERS

Size: DN15 ~ DN300 | Working pressure: PN10/PN16 | Flanged/Thread connection  
Output pulse signal, via communication interfaces RS-485 Fieldbus ; M-BUS Fieldbus

### SMART WATER METERS

Insert or inline type (Flanged/Thread connection) | Turbine Or Electromagnetic Type | Size: DN15 ~ DN900  
Output pulse signal | Analog signal, optional for voltage or current signals



### BTU METERS

Used to display parameters and calculate BTU cooling capacity | Live display and connect to BMS | Size: DN15 ~ DN900

## THERMOMETERS



### THERMOMETERS (STRAIGHT/ANGLE TYPE)

Measurement range: -30°C ~ 600°C | Dial: 40mm ~ 160mm | Stem: 110mm ~ 200mm (optional) | Material: Brass/Steel/Stainless steel | Thread connection

## PRESSURE GAUGES



### PRESSURE GAUGES

Oil-filled or non-oil filled | Dial: 40mm ~ 160mm | Max measurement range: 600Bar | Case: Steel/Stainless steel | Brass/Stainless steel Thread connection



## **SPECIALIZED VALVES FOR WATER HEATING SYSTEMS**

**Inta – United Kingdom  
Flamco – Netherlands  
Samyang - Korea**

To ensure a safe and energy-efficient hot water supply system that distributes hot water appropriately to all branches of the heating system, PGTECH provides high-quality specialized valves and equipment solutions such as thermal balancing valves, thermostatic mixing valves, safety valves, expansion vessels, pressure reducing valves, various types of Shut-off valves, flexible joints, measuring display equipment... from well-known brands in the EU, G7, Korea...



## THERMOSTATIC MIXING VALVES



**THERMOSTATIC MIXING VALVES FOR WATER HEATING SYSTEM AND BRANCH LINE WATER**

Body: Brass/stainless steel | Working pressure : PN10/PN16 | Maximum inlet temperature: 90°C | Adjustable range: 30°C ~ 65°C / 45°C ~ 65°C / 35°C ~ 70°C / Anti-scald

## THERMAL BALANCING VALVES



**THERMAL BALANCING VALVES FOR HOT WATER CIRCULATION SYSTEMS**

Body: Brass | Working pressure: PN10/PN16 | Maximum Inlet temperature: 90°C | Adjustable range: 40°C ~ 65°C

## PRESSURE REDUCING VALVES



**PRESSURE REDUCING VALVES FOR WATER SYSTEM**

Body: Brass/Stainless steel/Ductile Iron | Flanged/Screwed connection | Working pressure: PN10/PN16/PN25 | Maximum working temperature: 80°C

## SAFETY VALVES



**SAFETY VALVES FOR WATER SYSTEMS**

Body: Brass/Stainless steel/Ductile Iron | Flanged/Screwed Connection | Working pressure: PN10/PN16/PN25 | Maximum working temperature: 80°C/120°C (Optional)

## PRESSURE TEMPERATURE SAFETY VALVES



**BRASS THERMOSTATIC SAFETY VALVES**

Working Pressure: 7Bar | Temperature: -10°C ~ 120°C

## BACKFLOW PREVENTERS VALVES



**BACKFLOW PREVENTERS VALVES FOR WATER SYSTEM**

Body: Brass | Screwed connection | Working pressure: PN10 | Maximum working temperature: 65°C

## OTHER VALVES



**Brass Ball Valves, Screwed Connection**  
Working pressure: PN10/PN25/PN42  
Maximum temperature : 180°C

**Brass/Stainless Steel/Cast Iron/Ductile Iron Gate Valves, Flanged/Screwed Connection**  
Working pressure: PN10/PN16/PN25 | Maximum temperature : 180°C

**Brass/Stainless steel/Cast Iron/ threaded/flanged Y-strainers**  
Working pressure: PN10/PN16/PN25  
Maximum temperature : 180°C

**Brass/ Cast iron air vent valves, Threaded connection**  
Working pressure: PN10/PN16/PN25  
Maximum working temperature : 120°C



# DAMPER ACTUATORS

**Belimo - Switzerland**

Belimo - Switzerland, is the world's largest manufacturer of Damper actuators, controlling more than 90% of the damper actuator market in Europe (EU) and over 70% in the United States. In Asia and Vietnam, Belimo holds a significant market share. PGTECH provides a full range of damper actuator solutions, including spring-return, Fail-Safe, and fire & smoke control types with torque rating ranging from 2 Nm to 40 Nm, opening/closing time ranging from 2 seconds to 150 seconds, originating from Switzerland and the United States.



## STANDARD DAMPER ACTUATORS



### DAMPER ACTUATORS – STANDARD TYPE

Electric control | Types of control: On-Off / Modulating / 3 points | Torque momen: 5Nm ~ 40Nm | Opening/Closing time: 150s

## FAIL — SAFE DAMPER ACTUATORS



### DAMPER ACTUATORS - FAIL-SAFE TYPE

Electric control | spring-return position integrated | Types of control: On-Off / Modulating | Torque Momen: 2.5Nm ~ 30Nm | Opening/Closing time: <25s

## FAST ON/OFF DAMPER ACTUATORS



### DAMPER ACTUATORS – FAST ON/OFF TYPE

Electric control | Types of control: On-Off / Modulating / 3 points | Torque momen: 2Nm ~ 20Nm | Opening/Closing time: 35s

## FAST ON/OFF DAMPER ACTUATORS 2.5s–20s



### DAMPER ACTUATORS – FAST ON/OFF 2.5s – 20s TYPE

Electric control | Types of control: On-Off / Modulating / 3 points | Torque momen: 2Nm ~ 20Nm | Opening/Closing time: 35s

## FIRE & SMOKE DAMPER ACTUATORS – EU



### DAMPER ACTUATORS - FIRE & SMOKE CONTROL TYPE (EU series)

Electric control | Spring-return position integrated | Integrated temperature sensor (optional) | Types of control: On-Off / Modulating

## FIRE & SMOKE DAMPER ACTUATORS – US



### DAMPER ACTUATORS - FIRE SMOKE CONTROL TYPE (US Series)

Electric control | Spring-return position integrated | Additional temperature sensors can be installed | Types of control: On-Off / Modulating



# SENSORS

**Belimo - Switzerland**

Belimo - Switzerland is not only renowned for its control valves and damper actuators but is also widely recognized in the field of HVAC automatic technology for its sensors. Offering a full range of sensor solutions for HVAC systems within the Field Devices category, Belimo has enhanced its solution offering for the market with a diverse range of high-precision, intelligent sensors originating from Europe (EU).



## PRESSURE SENSORS



**PRESSURE SENSORS FOR WATER AND AIR SYSTEMS**  
 Measuring Pressure and Differential Pressure | Output signal: switch type / 0 - 5V / 0 - 10V / 4 - 20mA / Modbus | Measurement range: -150 Pa ~ 25 Bar (optional)

## TEMPERATURE SENSORS



**TEMPERATURE SENSORS FOR WATER AND AIR SYSTEMS**  
 Temperature sensor | Measurement range : 50°C ~ 250°C (optional) | Output signal: switch type, PT100, PT1000, NI1000, NI1000IK5000, NTC10K2, NTC10K, NTC20K, NTC10K3, 0 - 5V, 0 - 10V, 4 - 20mA

## HUMIDITY SENSORS



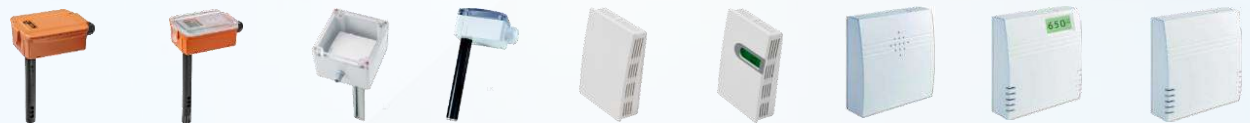
**HUMIDITY SENSORS / HUMIDITY AND TEMPERATURE SENSORS FOR INDOOR AND OUTDOOR PIPING SYSTEMS**  
 Humidity meter / Humidity and temperature | Measurement range: 0 - 100RH (optional) | Output signal: switch type, 0 - 5V, 0 - 10V, 4 - 20mA, NTC10K3, Modbus, BACnet

## LEVEL SENSORS



**LEVEL SENSORS FOR WATER SYSTEM**  
 Level meter , Humidity/temperature meter | Measurement range: 0 - 100RH (optional) | Output signal: switch type, 0 - 5V, 0 - 10V, 4 - 20mA, NTC10K3, Modbus, BACnet

## AIR SENSORS



**AIR QUALITY SENSORS**  
 CO, CO<sub>2</sub>, VOC concentration measurement | Output signal: 0 - 5V, 0 - 10V, 4 - 20mA, NTC10K2, Modbus, BACnet

## FLOW SENSORS



**FLOW SENSORS FOR WATER SYSTEMS**  
 Flow sensor | Size: DN15 - DN150 | Output signal: 0 - 10V | Flanged/Screwed Connection

## AIR VELOCITY SENSORS



**AIR VELOCITY SENSORS**  
 Output signal: 4 - 20mA, 0 - 10V

## OTHER SENSORS



**INDOOR SENSORS**  
 Integrated temperature, humidity and air quality sensor, concentration of CO, CO<sub>2</sub>, VOC

**TEMPERATURE ENERGY METERS**  
 Output signal: 0 - 10V, BACnet, Modbus, MP-Bus | Size: DN15 - DN50



# HARD WATER TREATMENTS SOLUTIONS ACTIVFLO

Inta - United Kingdom

INTA/UK provides the most advanced solution for treating hard water and lime scale contamination in water nowadays. The ActivFlo technology from the United Kingdom does not use chemicals, salt regeneration, or cation resin beads. It does not discharge wastewater, consume electrical energy, and offers a long product lifespan. ActivFlo is efficiently applicable in residential, commercial, industrial, and agricultural settings. Particularly, ActivFlo is a cost-effective and efficient solution for operating hard water treatment systems in HVAC Chiller/Heating systems and water supply and drainage systems.



## ACTIVFLO STANDARD



### ACTIVFLO LITE - HARD WATER TREATMENT SOLUTION FOR RESIDENTIAL

Size: 15mm, 22mm, 28mm | Body: Brass, Chrome-plated | Treating hard water and lime scale in water system | Without using electricity

## ACTIVFLO & ACTIVFLO COMMERCIAL



### ACTIVFLO COMMERCIAL - HARD WATER TREATMENT SOLUTION

Size: 15mm, 22mm, 28mm / 1/2" ~ 6" | Body: High-quality SUS316 | Treating hard water and lime scale in water system | Without using electricity | Flanged or Screwed connection

## ACTIVFLO PRO



### ACTIVFLO COMMERCIAL - HARD WATER TREATMENT SOLUTION WITH POWER REGULATOR

Size: 22mm / 3/4" ~ 10" | Body: High-quality SUS316 | Treating hard water and lime scale in water system | Power Regulator | Flanged or Screwed connection



# **SOLUTIONS FOR POLLUTED WATER TREATMENT**

**Techneau - France**

Techneau (France) is one of the leading manufacturers of solutions of Grease Separators, Oil Separators (machine maintenance shop, petroleum plant, garage, port...), Storm Separators, and Waste Water Station...

All separators of Techneau, made of stainless steel, polyethylene, and steel... with a variety of applications and sizes, have been equipped with automatic, advanced technology, commonly used in Europe and around the world.



## GREASE AND STARCH SEPARATORS



Special Grease separators above ground installation  
Stainless Steel size 2 EDGS 1 TN 2L/s

Grease separators with sludge trap  
Polyethylene NS 1 - 20 Ellipse

Grease separators with sludge trap  
Stainless steel NS 1 - 15 BDG

Mini-Grease separators under sink connection  
Inox size 0,75 Mini GR

Mini-Grease separators Under sink connection  
Polyethylene NS 0,75 GM1E

Grease separators with sludge trap  
Polyethylene NS 30-40 DG

Grease separators with sludge trap  
Polyethylene NS 1 - 20 TechnaSphère

## AUTOMATIC GREASE SEPARATORS



Automatic Grease Separators use an automatic controller, valve and pump

## OIL SEPARATORS (OILS)



Oil separator with sludge trap, coalescing filter and by-pass, size 1,5 - 35 l/s

Oil separator with sludge trap & coalescing filter, size 1,5 - 30 l/s  
HydroCube

Oil separator with sludge trap & coalescing filter, size 1,5 - 30 l/s Ellipse

Cylindrical oil separator with sludge trap and coalescing filter, size 30 - 50 l/s

Cylindrical oil separator with sludge trap and coalescing filter, size 30 - 50 l/s

## STORMWATER TREATMENT



Vertical tank without by-pass from 0.04 to 0.3ha

Decan'eau Solution Optimum Stormwater Treatment

Horizontal tank without by-pass from 0.04 to 0.3ha

Light waste separator with coalescing filter, size 3 - 50 l/s Aronde

## WASTE WATER TREATMENT STATION



Waste water submersible pumping station for private houses, dormitories, apartments, small, medium -sized commercial buildings ...



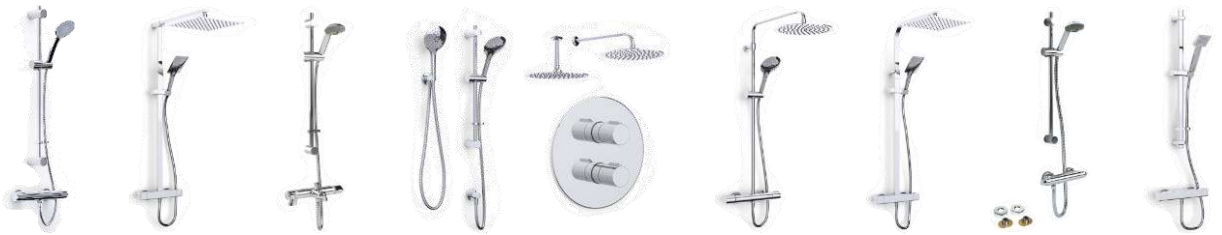
## **OTHER PRODUCTS**

Tozen - Japan  
Belimo - Switzerland  
Inta – United Kingdom  
Onicon - USA  
Flamco – Netherlands  
Comap - France  
Fesco – Korea  
Samyang - Korea  
Cidong - Korea  
Wonil - Korea

With a various range of products from leading global manufacturers such as Flamco (Netherlands), Belimo (Switzerland), TOZEN (Japan), PA (Germany), INTA (United Kingdom), Samyang (Korea), Paratech/Fesco (Korea), Cidong (Korea), Comap (France), etc, PGTECH can provide diverse solutions in the field of M&E equipment. We offer tailored solutions based on customer requirements and find the most cost-effective solutions. If your company has specific equipment needs or concerns, please share them with PGTECH. We will work to find the best solutions to meet your company's requirements.



## SHOWERS



SHOWER

Designed with high-quality stainless steel using the most advanced technology from the United Kingdom, products have a long lifespan and are particularly safe for users

## SHOWER TAPS



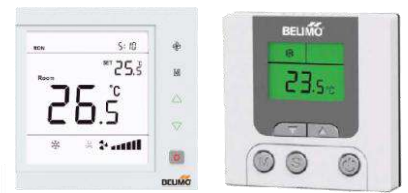
SHOWER TAPS

Designed with high-quality stainless steel using the most advanced technology from the United Kingdom, products have a long lifespan and are particularly safe for users

## VALVE AND OTHER EQUIPMENT

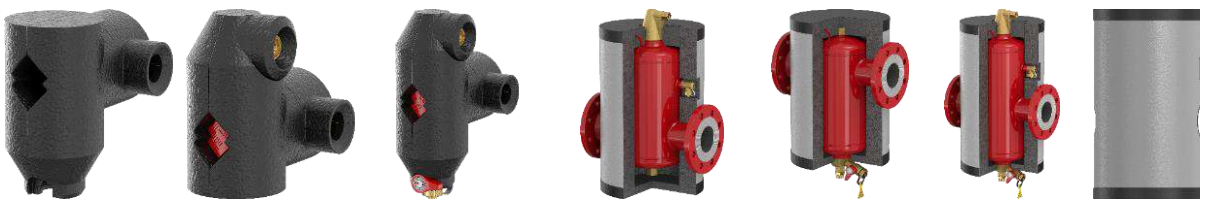


EU standard drinking water taps



Room temperature control equipment

## INSTALLATION ACCESSORIES



Heat insulation protection coating for Air separator, Grooved/Flanged/Screwed connection



Replacement and installation accessories for air separator



Heat insulation protection for hot water tank



Installation accessories for pressure and temperature gauge



T-Plus quick pipe connector



Heat insulation protection for pressurized thermal storage tank

# COOPERATIVE ACTIVITIES

## ❖ SOME IMAGES OF REPRESENTATIVES VISITING PGTECH



**TOZEN/JAPAN**



**BELIMO/SWITZERLAND**



**FLAMCO/NETHERLANDS**



**PA /GERMANY-SLOVAKIA**



**FESCO/Korea**



**SAMYANG/Korea**



# WAREHOUSE CAPACITY

## ❖ SOME IMAGES OF PGTECH'S WAREHOUSE





# REALISTIC IMAGES

❖ SOME REALISTIC IMAGES AT CONSTRUCTION SIDE USING PGTECH'S SOLUTIONS





# TYPICAL PROJECTS

## ❖ APARTMENTS, COMMERCIAL BUILDINGS, HOTELS, RESORTS



Vinhomes Riverside  
Long Bien - Hanoi



Home City - Trung Kinh,  
Hanoi



D'Capitale Tran Duy Hung  
- Hanoi



Hud Tower Le Van Luong  
- Hanoi



FLC Twin  
Towers Hanoi



Mipec Riverside - Hanoi



Mon Hue Restaurant  
Project - VinGroup



Vinhomes Thang Long  
Nam An Khanh - Hanoi



Sun Grand City Ancora  
Luong Yen - Hanoi



Sol Forest Ecopark  
Building - Hung Yen



Sun Grand City Hillside  
Residence Phu Quoc



Malibu Hoi An  
Resorts and Villas



Vinhomes Hai Phong



Alphanam Luxury  
Da Nang



The Opera Residence  
Metropole Thu Thiem



# TYPICAL PROJECTS

## ❖ APARTMENTS, COMMERCIAL BUILDINGS, HOTELS, RESORTS



Sky Oasis Khu Đô Thị  
Ecopark Hưng Yên



Dragon Hill Project – Hai  
Phong



Techcombank Building  
No. 44 Ly Thuong Kiet Hanoi



VINPEARL Nha Trang



Swisstouches Laluna  
Resort Nha Trang



Lovera Vista Khang Dien  
Ho Chi Minh City



Panorama Nha Trang



Hateco  
La Roma Building, Hanoi



Residence Quy Nhon



T&T Victoria Building  
Nghe An



The Zei Building  
Le Duc Tho - Hanoi



Flora Akari City  
Tan Binh - Ho Chi Minh City



Thien Nien Ky  
HaTay Millennium Tower- Hanoi



Mon Home Mon City Hai  
Dang Building  
Phase 2 - Hanoi



Sunworld Ba Na Hills  
Đà Nẵng



# TYPICAL PROJECTS

## ❖ APARTMENTS, COMMERCIAL BUILDINGS, HOTELS, RESORTS



**Long Thuan Resort  
Binh Son - Ninh Thuan**



**Novaland Guest house  
Ho Chi Minh City**



**Ecohome 3  
Bac Tu Liem - Hanoi**



**Alma Resort  
Cam Ranh - Khanh Hoa**



**Bai Tram Estates Resort  
Phu Yen**



**Flamingo Cat Ba  
Beach & Resort**



**Hanoi Grand Mercure  
Hotel - Hanoi**



**Hai Phong Chuo Hotel  
Vietnam**



**Aquabay Sky  
Residences Urban Area  
Hung Yen**



**Movenpick Phu Quoc  
Condotel & Villa**



**Altara Residences  
Quy Nhon**



**Marriott Hotel Da Nang**



**Opal Boulevard Building  
Binh Duong**



**Aqua Park Commercial  
Residential Building  
Bac Giang**



**Hinode City Plaza  
Minh Khai - Hanoi**



# TYPICAL PROJECTS

## ❖ APARTMENTS, COMMERCIAL BUILDINGS, HOTELS, RESORTS



**Toriental Sun Tower  
198 – Tran Quang Khai**



**King Palace Hanoi  
108 Nguyen Trai - Hanoi**



**90 Nguyen Tuan Luxury  
Building - Hanoi**



**Vinaconex 34 Office  
Building - Hanoi**



**ICID Complex Building  
Ha Dong - Hanoi**



**Dai Phuoc Lotus  
Nhon Trach- Dong Nai**



**Ha Thanh Hotel  
Ha Long – Quang Ninh**



**Republic Plaza  
Ho Chi Minh City**



**Festival Vung Tau  
Vung Tau City**



**Thanh Cong Residence  
Building- 345 Doi Can**



**Casino Hoi An  
Quang Nam Province**



**BIDV Tower  
Tran Quang Khai - Hanoi**



**Mandrin Garden 2  
Hoa Phat Group - Hanoi**



**Hoang Nham Hotel  
Lai Chau Province**



**Hot mineral resort My  
An –Thua Thien Hue**



# TYPICAL PROJECTS

## ❖ APARTMENTS, COMMERCIAL BUILDINGS, HOTELS,



**Richstar Building**  
Tan Phu – Ho Chi Minh



**Aqua Bay Ecopark**  
Hanoi



**Osaka Complex Building - Hanoi**



**The Legend**  
109 Nguyen Tuan - Hanoi



**Vinpearl Empire**  
Condotel Nha Trang



**Jamila Khang Dien**  
Ho Chi Minh City



**Vinhomes Shophouse**  
Thanh Hoa – Thanh Hoa City



**Vinhomes Sky Lake**  
Pham Hung - Hanoi



**Vincom Shophouse**  
Lang Son – Lang Son city



**Vinhomes Green Bay**  
Me Tri Hanoi



**Ha Do Centrosa Garden**  
Ho Chi Minh City



**Ocean Gate Nha Trang**  
Hotel & Residence



**Vincom Shophouse**  
Thai Nguyen city



**Sonasea Condotel**  
& Villas Phu Quoc



**Vinhomes Metropolis**  
Lieu Giai - Hanoi



# TYPICAL PROJECTS

## ❖ APARTMENTS, COMMERCIAL BUILDINGS, HOTELS, RESORTS



VIE building 28A Tran Hung Dao



Vinhomes Ha Nam



Flamingo Dai Lai Resort Vinh Phuc



Vinhomes Bac Ninh



Dabaco Shopping Mall Que Vo – Bac Ninh



Imperia Sky Garden Hanoi



Sun Red River Building Renovation Hanoi



Holiday hotel – Nha Trang city



Bau Tram lakeside Danang



Han Jardin Building – Ngoai Giao Doan, Hanoi



Lotte Mall – Tay Ho, Hanoi



FLC Garden City – Dai Mo, Hanoi



Four Seasons Hotel – Hoan Kiem, Hanoi



Vinhomes Ocean Park, Hanoi



Pullman Hotel – Haiphong



# TYPICAL PROJECTS

## ❖ STATE AGENCIES AND ENTERPRISES



**National Convention Center**



**State Audit Office - Facility II Building**



**National Exhibition Center Tu Liem - Hanoi**



**Noi Bai International Airport**



**Hanoi City Party Committee Headquarters Building**



**State Treasury - 32 Cat Linh, Hanoi**



**State Bank of Vietnam Headquarters - Hanoi**



**Military Broadcasting and Television Center**



**Renovation of the Ministry of Public Security Headquarters - Hanoi**



**Supreme People's Court Headquarters - Hanoi City**



**Pediatric Hospital Ho Chi Minh City**



**Headquarters Building of the Telecommunications Bureau - Hanoi**



**Customs Department Headquarters - Ho Chi Minh City**



**Viettel Military Telecommunications Group Headquarters - Cau Giay, Hanoi**



**Military Hospital 103 Ha Dong - Hanoi**



# TYPICAL PROJECTS

## ❖ STATE AGENCIES AND ENTERPRISES



**Green One UN House,  
Vietnam UNDP Headquarters**



**Traditional Medicine  
Hospital of the Ministry of  
Public Security**



**Vientiane Complex  
Vieng Chan - Lao**



**Clean Water Supply System  
- Vinh Cuu, Dong Nai**



**Hydropower Plant  
Xekaman 1 - Lao**



**Metro Station  
Hanoi**



**EVN Tower Tay Ninh**



**General Hospital  
Thai Binh**



**General Hospital  
Lang Son**



**Training Center  
Royal Tay Ho - Hanoi**



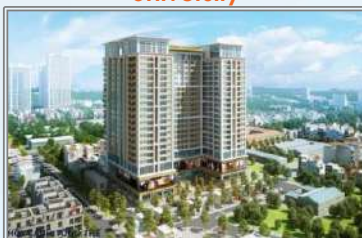
**Lecture Hall Building  
National Economics  
University**



**Nam Nua Hydropower  
Dien Bien**



**Vietinbank Building  
Vieng Chan - Lao**



**Officers and Soldiers of  
the Ministry of Public  
Security Building - Hanoi**



**TOMECH High-Tech  
Medical Center  
Hanoi**



## ❖ FACTORIES AND EXPORT PROCESSING ZONES



**Crystal Martin Vietnam  
Quang Chau, Bac Giang**



**Medical B. Braun Hanoi**



**Hung Yen Thermal Power  
Plant**



**Vina Kraft Paper Factory  
Binh Duong, Vietnam**



**Sakai Mineral  
Processing Factory -Laos**



**Sei Electronic  
Components, Vietnam**



**Hai Phong Pegastron  
Factory**



**Samsung R&D Center  
Hanoi**



**Toyota Gosei Factory  
Thai Binh, Vietnam**



**Vinasanfu material factory,  
Dinh Vu, Hai Phong**



**No.3 Central Pharmaceutical,  
Hai Phong, Vietnam**



**Vietnam FCC Factory  
Thang Long Industrial Zone, Hanoi**



**Hung Yen ADC Plastic  
Factory**



**Viet Hung Packaging  
Factory  
Hung Yen -Vietnam**



**MMPA LNG Storage  
Warehouse 1  
Thi Vai Port ,Vung Tau**

# TYPICAL PROJECTS

## ❖ FACTORIES AND EXPORT PROCESSING ZONES



**Nghi Son 1 Thermal Power Plant**  
Tinh Gia ,Thanh Hoa



**Kyocera Vietnam**  
Factory Hung Yen



**ABB Factory**  
Bac Ninh, Vietnam



**Ngoc Tuan Water Plant**  
Hung Yen



**ECCO's factory**  
Binh Duong, Vietnam



**Meiko Electronics Vietnam**  
Hanoi



**Bati Logistic center**  
Hanoi -Bac Ninh



**Nam Ha Pharmaceutical**  
Factory Nam Dinh



**Amkor Technology Vietnam**



**Nghi Son Refinery**  
Thanh Hoa



**Sumidenso Factory**  
Hai Duong



**Hitachi Cable Factory**  
Hai Duong



**Sumiden Vietnam**  
Automotive



**Viet Avis's poultry slaughtering**  
and processing factory



**VSMART factory**  
Hai Phong



## ❖ FACTORIES AND EXPORT PROCESSING ZONES



Vietnam Jabil Factory



TAMURA Vietnam Factory  
Vinh Phuc



VNG Software production  
and development center  
Ho Chi Minh City



Rorze Robotech factory  
Hai Phong



VinFast vehicle factory  
Hai Phong



Hanoi Tsuchiya TSCO factory  
Vinh Phuc



TOTO Factory Phase II  
Hung Yen



Vung Ang 1 Thermal Power Plant  
Ky Anh - Ha Tinh



YFY Packaging factory  
Ha Nam



Accredo Asia factory  
Binh Duong



Southeast Duc Giang  
Oil Depot Hanoi



Vietnam Best Pacific factory  
Hai Duong



Vietnam Kanefusa factory  
Thang Long Industrial zone ,  
Vinh Phuc



Vietnam Best Pacific  
Factory phase 2  
Hai Duong



Canon Vietnam Que Vo Factory  
Bac Ninh

# TYPICAL PROJECTS

## ❖ FACTORY AND EXPORT PROCESSING ZONE PROJECTS



Vietnam Daiwa factory  
Da Nang, Vietnam



Gold Sun factory  
Que Vo Industrial Zone, Bac Ninh,



Hung Yen Thermal  
Power Plant



Formosa Ha Tinh Industrial  
Park



Perfetti Van Melle Vietnam



Mapletree Logistics Warehouse  
Bac Ninh



Heiwa factory  
Bac Ninh



Hoa Phat Steel Sheet factory  
Hung Yen



Nestlé milk factory  
Myanmar



WINGA Garment Factory –  
Tay Ninh



Honda 3 Factory 3  
Ha Nam



Tan Binh Chemical Factory 2  
Dong Nai



Vinh Tan 1 Thermal Power Plant  
Binh Thuan



TOTO Vietnam Faucet  
Factory – Vinh Phuc



Samsung Electro – mechanics  
Vietnam – Thai Nguyen





***Solutions to Better Values***



**Thank You!**



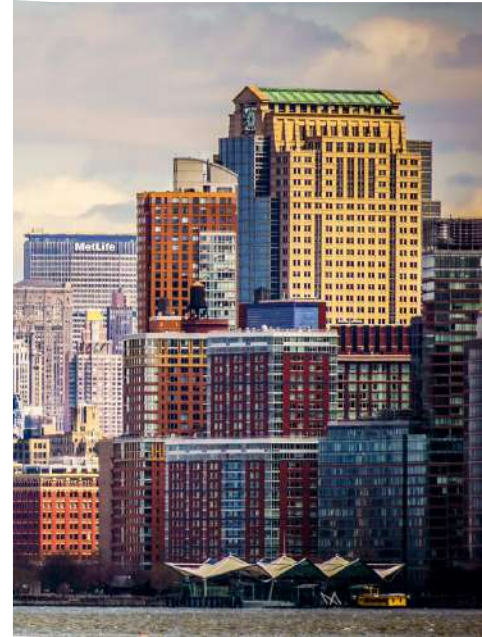
**PGTECH COMPANY LIMITED**

**Office address:** 3rd Floor, C14-CT1 Building,

To Huu Street, Trung Van Ward, Nam Tu Liem District, Hanoi City.

**Registered address:** No 12, Lane 28, Quang An Ward, Tay Ho District, Hanoi City, Vietnam

**Tel:** +84-24-7302 3588 - **Email:** sales@pgtech.com.vn - **Website:** pgtech.com.vn



## PGTECH CORE VALUES

With the desire of bringing true value to M&E systems of construction projects, so that residents and society can benefit from these values, PGTECH collaborates with world-renowned manufacturers to provide excellent and safe solutions with cost savings and the most advanced technology.



### Trusted Brands

Global brands from EU countries G7 countries and Korea, etc.

### Advanced Solution & Technology

Unique and effective solution for M&E systems with high durability and long lifespan.

### Safe And User-friendly

Use high-quality materials evaluated and tested by renowned organizations around the world.

### Cost Savings

Competitive product price and high performance helps save energy effectively.

### Service Quality

In-depth technical support. Fast delivery. Efficient after-sales service, best support to customers.

### PGTECH COMPANY LIMITED

Office address: 3rd Floor, C14-CT1 Building,  
To Huu Street, Trung Van Ward, Nam Tu Liem District, Hanoi City.

Registered address: No 12, Lane 28, Quang An Ward, Tay Ho District, Hanoi City, Vietnam  
Tel: +84-24-7302 3588 - Email: sales@pgtech.com.vn - Website: pgtech.com.vn