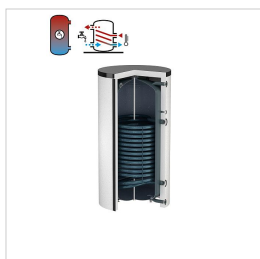


Product Data Sheet (2020-10-15)

Duo 1500 - 3000

An indirectly heated and upright water heater including a permanently welded-in heating coil, suitable for all modern heating systems.



Type	Capacity [l]	Dimensions *			Heating surface area [m ²]	Heating capacity [kW] **	Water capacity [l/h] **	Insulation colour	Weight [kg]	###	Order Code
		Ø [mm]	H [mm]	Tilting height [mm]							
Duo 1500	1500	1000	2320	2480	6.4	143	2383	white	570	1	19310
Duo 1500	1500	1000	2320	2480	6.4	143	2383	white alu.	570	1	19311
Duo 2000	2000	1100	2400	2600	7.3	170	2951	white	666	1	19315
Duo 2000	2000	1100	2400	2600	7.3	170	2951	white alu.	666	1	19316
Duo 3000	3000	1200	2830	3000	7.3	170	2951	white	939	1	19318

* Dimensions excluding insulation.

** At 80 °C supply temperature and 60 °C potable water temperature.



Type	Distance from floor to connection centres				
	A [mm]	B [mm]	C [mm]	D [mm]	E [mm]
Duo 1500	85	435	1555	1735	2235
Duo 2000	105	455	1575	1755	2255
Duo 3000	95	470	1590	2205	2730

Advantages

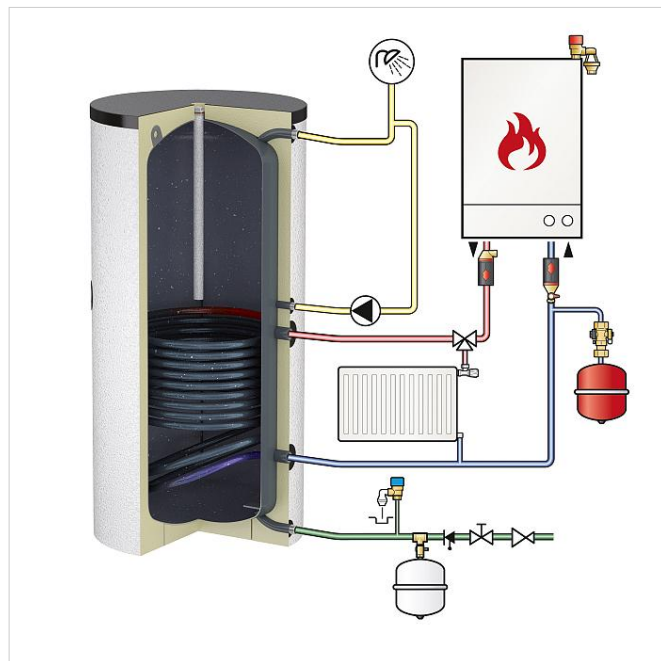
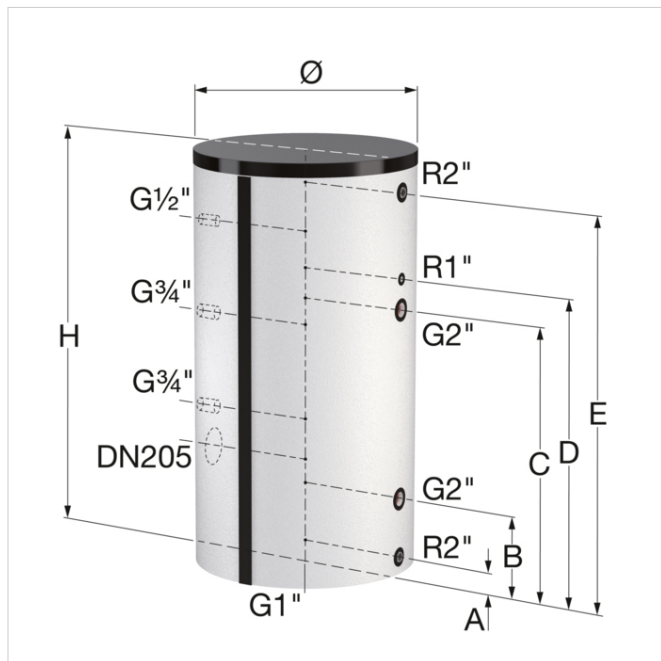
- Minimum lime deposits due to smooth surfaces. High-quality glass lining according to DIN 4753/part 3 for potable hot water production and optimum corrosion protection by means of a FSA no-maintenance anode.
- Equipped with a built-in thermometer.
- Feet adjustable in height for accurate levelling.
- Inspection flange at the side: DN 205, suitable for connecting additional heating elements; Ex Works - closed with a removeable blind flange.
- Suitable for connecting additional heating elements and fitted with a coupling sleeve for accessories.
- The heating coil is designed to ensure full depth heating to prevent the accretion of Legionella bacteria.

Technical information

- Maximum working pressure: 10 bar (potable water vessel) / 16 bar (heating coil).
- Maximum working temperature: 95 °C (potable water vessel) / 110 °C (heating coil).
- Insulation:

Standard colours: white (RAL 9010) and white aluminium (RAL 9006).

Including EPS insulating mantle (fire category B1) with a polypropylene outer shell (fire category B2).



Find more information online:

[Manuals](#)

[Certificates](#)

[CAD drawings](#)

[Extra documentation](#)

Flamco Group
 Plotterweg 31
 3821 BB, Amersfoort - nl
T +31 33 299 75 00
E info@flamcogroup.com
I flamcogroup.com