

Product Data Sheet (2020-10-15)

Duo 120 - 500

An indirectly heated and upright water heater including a permanently welded-in heating coil, suitable for all modern heating systems.



Type	Capacity [l]	Dimensions *			Heating surface area [m ²]	Heating capacity [kW] **	Water capacity [l/h] **	Insulation colour	Weight [kg]	###	Order Code
		Ø [mm]	H [mm]	Tilting-height [mm]							
Duo 120	120	560	940	1090	0.5	10.2	177	white alu.	63	1	18501
Duo 120	120	560	940	1090	0.5	10.2	177	white	63	1	18500
Duo 150	150	560	1050	1200	0.6	11.6	202	white alu.	68	1	18503
Duo 150	150	560	1050	1200	0.6	11.6	202	white	68	1	18502
Duo 200	200	560	1350	1500	0.9	18.6	323	white alu.	86	1	18505
Duo 200	200	560	1350	1500	0.9	18.6	323	white	86	1	18504
Duo 300	300	660	1620	1750	1.3	29.5	513	white alu.	105	1	18447
Duo 300	300	660	1620	1750	1.3	29.5	513	white	105	1	18435
Duo 400	400	750	1530	1715	1.6	35.4	615	white alu.	158	1	18390
Duo 400	400	750	1530	1715	1.6	35.4	615	white	158	1	18423
Duo 500	500	750	1730	1895	2.0	45.2	785	white alu.	181	1	18395
Duo 500	500	750	1730	1895	2.0	45.2	785	white	181	1	18429

* Dimensions including insulation.

** At 80 °C supply temperature and 60 °C potable water temperature.



Type	Distance from floor to connection centres				
	A [mm]	B [mm]	C [mm]	D [mm]	E [mm]
Duo 120	65	245	545	635	885
Duo 150	65	245	590	690	985
Duo 200	65	245	710	885	1285
Duo 300	65	310	750	850	1560
Duo 400	70	330	770	870	1470

Type	Distance from floor to connection centres				
	A [mm]	B [mm]	C [mm]	D [mm]	E [mm]
Duo 500	70	330	890	990	1670

Advantages

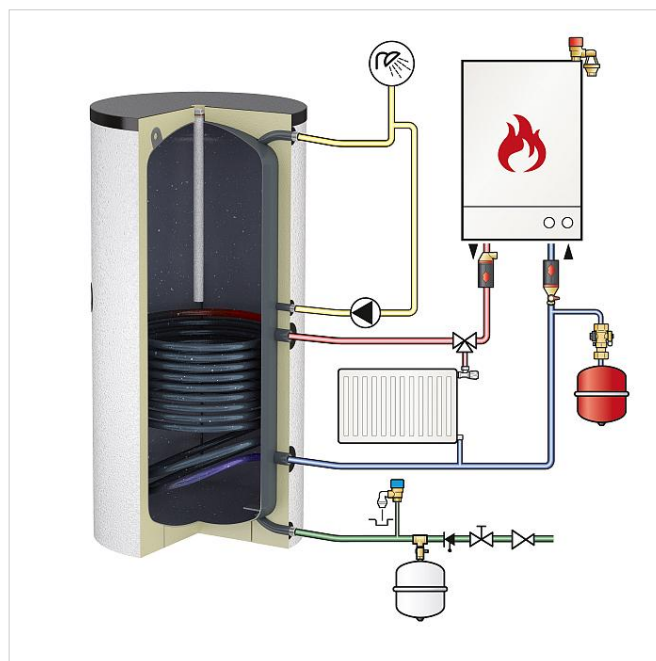
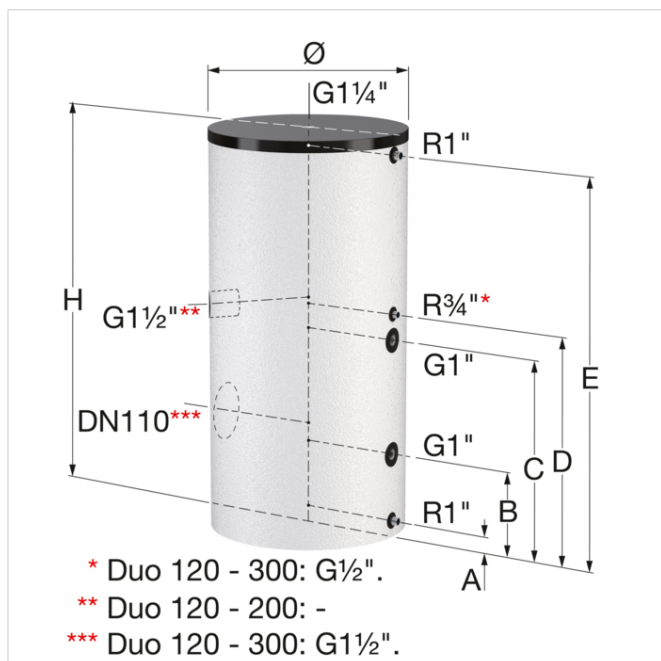
- Minimum lime deposits due to smooth surfaces. High-quality glass lining according to DIN 4753/part 3 for potable hot water production and optimum corrosion protection by means of a standard Mg-anode.
- Equipped with a built-in thermometer and immersion pipe.
- A set of adjustable feet is optionally available (Art.No. 18989).
- From 400 litres, equipped with a DN 110 inspection flange at the side, suitable for connecting additional heating elements; Ex Works - closed with a removeable blind flange.
- The heating coil is designed to ensure full depth heating to prevent the accretion of Legionella bacteria.

Technical information

- Maximum working pressure: 10 bar (potable water vessel) / 16 bar (heating coil).
- Maximum working temperature: 95 °C (potable water vessel) / 130 °C (heating coil).
- Insulation:

Standard colours: white (RAL 9010) and white aluminium (RAL 9006).

Including hard foam insulation (direct foam injection) with a polystyrene outer shell.



Find more information online:

[Manuals](#)

[Certificates](#)

[CAD drawings](#)

[Extra documentation](#)

Flamco Group
Plotterweg 31
3821 BB, Amersfoort - nl
T +31 33 299 75 00
E info@flamcogroup.com
I flamcogroup.com