

Product Data Sheet (2020-10-15)

Duo HLS-E 120 - 500

An indirectly heated water heater that can be combined with all heating installations. The Diabolo-shaped coil guarantees an efficient heat exchange with a short heat up time. The Duo HLS-E provides optimum performance combined with a high level of energy efficiency.



Type	Capacity [l]	Dimensions *			Insulation colour	Weight [kg]	###	Order Code
		Ø [mm]	H [mm]	Tilting height [mm]				
Duo HLS-E 120	119	595	994	1116	white	23	1	19900
Duo HLS-E 150	148	595	1185	1282	white	27	1	19901
Duo HLS-E 150	148	595	1185	1282	silver	27	1	19902
Duo HLS-E 200	194	595	1487	1558	white	34	1	19903
Duo HLS-E 200	194	595	1487	1558	silver	34	1	19904
Duo HLS-E 300	296	675	1805	1884	white	48	1	19905
Duo HLS-E 300	296	675	1805	1884	silver	48	1	19906
Duo HLS-E 400	393	795	1720	1844	white	69	1	19907
Duo HLS-E 400	393	795	1720	1844	silver	69	1	19908
Duo HLS-E 500	479	795	2020	2126	white	77	1	19909
Duo HLS-E 500	479	795	2020	2126	silver	77	1	19910

* Dimensions including insulation.



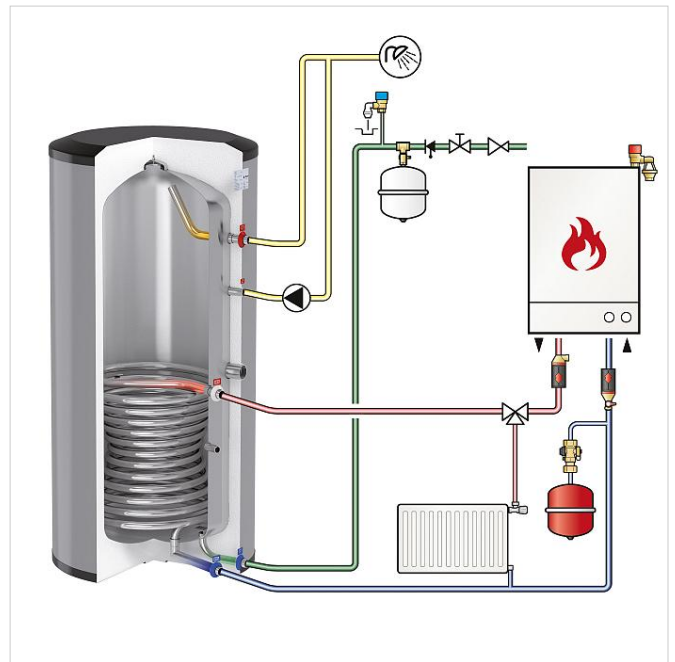
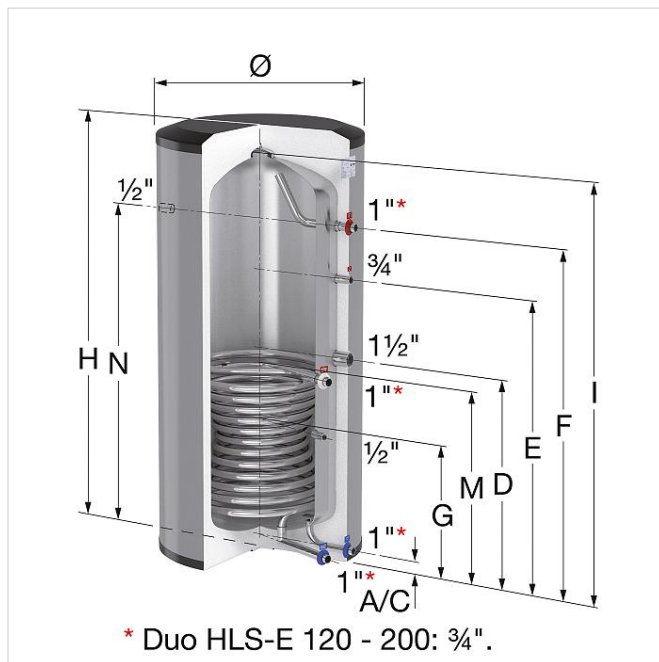
Type	Distance from floor to connection centres						
	A/C [mm]	M [mm]	D [mm]	E [mm]	F/N [mm]	G [mm]	I [mm]
Duo HLS-E 120	50	390	-	618	748	293	933
Duo HLS-E 150	50	450	-	808	938	353	1123
Duo HLS-E 200	50	553	-	1110	1240	378	1425
Duo HLS-E 300	53	658	798	1028	1278	458	1728
Duo HLS-E 400	55	690	745	1228	1413	490	1613
Duo HLS-E 500	55	690	745	1523	1723	490	1923

Advantages

- Efficient: Minimum heat loss and very fast heating up.
- Requires little maintenance and no anode.
- Light weight.
- Excellent stratification of the water in the vessel.
- High resistance to chloride (up to 250 ppm).

Technical information

- Maximum working pressure: 10 bar (potable water vessel) / 40 bar (heating coil).
- Maximum working temperature: 95 °C (potable water vessel) / 130 °C (heating coil).
- Stainless steel type: 1.4521.
- From 300 litres, including an 1 1/2" connection suitable for connecting an additional electric heating element.
- Insulation:
Standard colours: white and silver.
Including graphite polystyrene (GPS) insulation (direct foam injection) with a polypropylene outer shell (fire category B2).



Find more information online:

- [Manuals](#)
- [Certificates](#)
- [CAD drawings](#)
- [Extra documentation](#)

Flamco Group
Plotterweg 31
3821 BB, Amersfoort - nl
T +31 33 299 75 00
E info@flamcogroup.com
I flamcogroup.com