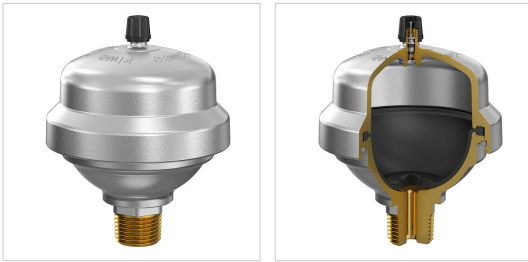


## Product Data Sheet (2020-07-18)

### Flexofit Super

Flexofit Super Super absorbs water hammer in order to minimize noise and damage to the system.

A water hammer arrestor absorbs the wave of pressure before it can develop into water hammer. The Flexofit Super does this by having two areas that are separated by a rubber diaphragm. On one side, there is a gas cushion under pressure, while the other side is in connected to the system. The gas cushion compresses and absorbs the wave of pressure.



Type	Pre-charge [bar]	Dimensions		Connection	###	Order Code
		Ø [mm]	H. [mm]			
Flexofit Super 1/2	2	83	102	R 1/2"	20	24980
Flexofit Super 1/2 with T-fitting	2	83	130	G 3/4" F x G 3/4" M	20	24989

### Technical information

- Maximum working pressure: 10.0 bar (peak load: 40.0 bar).
- Maximum working temperature: 90 °C.
- Capacity : 160 cm<sup>3</sup>.
- Solid brass, chromium plated housing.
- Membrane: butyl rubber.

### Find more information online:

[Manuals](#)

[Certificates](#)

[CAD drawings](#)

[Extra documentation](#)

[Animations](#)

Flamco Group  
Plotterweg 31  
3821 BB, Amersfoort - nl  
**T** +31 33 299 75 00  
**F** +31 33 298 64 45  
**E** [info@flamcogroup.com](mailto:info@flamcogroup.com)  
**I** <https://flamcogroup.com>